

# 2026 PRODUCT CATALOG

PASSENGER AND LIGHT TRUCK TYRES  
(EUROPE)



# A BRIEF RIDE THROUGH HISTORY

After a decade of promising growth, Armstrong purchases a small tyre manufacturing concern in New Haven, Connecticut.

1912 ←

A tyre dealer in New Jersey by the name of George F. Armstrong enters the tube and pneumatic tyre industry in a tiny loft.

→ 1922

Armstrong became the fifth largest tyre maker in the world, and ranked amongst the Fortune 500 companies.

1961 ←

Armstrong introduced the first bias-belted fiberglass tyre, one of many inventions.

→ 1965

The Armstrong Rubber Company moved into its \$7 million headquarters designed by renowned architect Michael Brauer in New Haven, Connecticut.

1970 ←

Armstrong achieved a record sales volume worth \$1 Billion.

→ 1986

Armstrong was acquired by Pirelli S.p.A, becoming Pirelli Armstrong Tyre Corporation.

1988 ←

Pirelli phases out the Armstrong brand in the latter half of the 1990s.

→ 1990

Newly reengineered, the Armstrong brand returns to the tyre industry as an independent entity.

2012 ←

Newly reengineered, the Armstrong brand returned to the tyre industry, continuing the Armstrong legacy of making premium products by quality-minded people.

→ 2015

2019 ←

Armstrong launched in Europe.

# WHY ARMSTRONG?

## VALUE-DRIVEN PRICING PROGRAM

Our unique pricing program was designed with our dealers in mind and is positioned to increase your profit margins so you can easily grow your business and stay competitive in today's modern tyre industry.



## RECOGNIZABLE NAME WITH A RICH LEGACY

The Armstrong name was once a household name listed as a Fortune 500 company and the 5<sup>th</sup> largest tyre manufacturer in the world. We aim to restore Armstrong's legacy and solidify its place in the tyre industry.

## DISTRIBUTION PROGRAM

Our tyres are manufactured in our state-of-the-art factories in Thailand and Indonesia and are distributed all over the world.



## A STELLAR SUITE OF SELL-OUT SUPPORT

Armstrong dealers receive sell-out support including training resources, marketing programs, and access to our Dealer Portal so you have all the sales tools you need at your fingertips.

## A WARRANTY DESIGNED FOR SELLING

Armstrong's built-to-last warranty includes lifetime replacement guarantee, mileage warranty up to 75,000 kilometers, and a 30-day money back guarantee.



# THE BUILT TO LAST WARRANTY

TUFF 360

At Armstrong, we value craftsmanship and precision. Our tyres aren't just black and round.

We used our century's worth of experiences combined with the latest technology in the industry to create the best tyre we could today. All Armstrong tyres are covered by our TUFF 360 warranty – the most comprehensive warranty in the industry inspired by our mascot, TUFFY the Rhino. TUFFY is tough, savvy, and resilient.

He doesn't shy away from the potholes of the world, and neither should you.

## TUFF 360 WARRANTY OVERVIEW



LIFETIME REPLACEMENT  
GUARANTEE AGAINST ANY  
KIND OF DEFECT



MILEAGE  
WARRANTY UP TO  
75K KMS



30-DAY MONEY-BACK,  
NO QUESTIONS  
ASKED

For detailed warranty policy, please contact your local Armstrong Executive

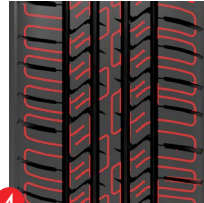
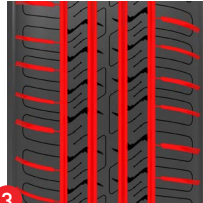
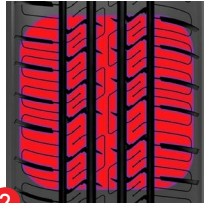
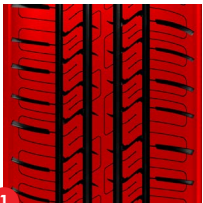


**ARMSTRONG  
SUMMER TYRES**

# BLU-TRAC PC3



**BLU-TRAC PC3** is the 3<sup>rd</sup> generation PCR pattern with a symmetrical tread design & uniform tread blocks that ensures even load distribution and consistent road contact, promoting uniform tread wear and extending the tyre's lifespan. Its optimized tread footprint provides a stable and smooth contact patch, reducing road noise and offering a comfortable, quiet ride, ideal for daily commuting.






## ENGLISH

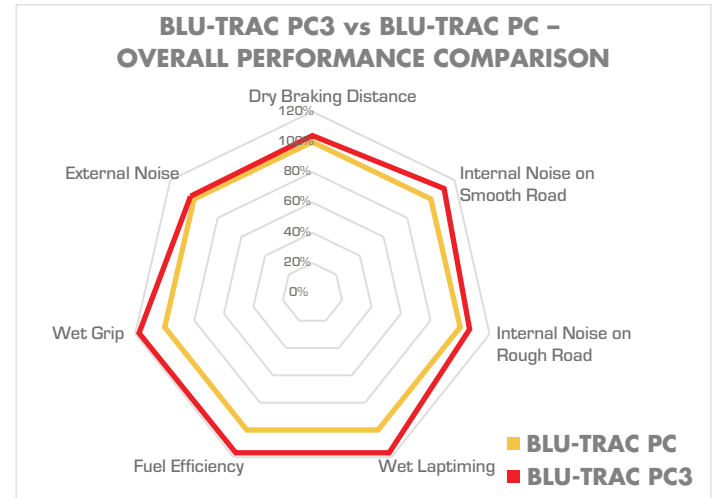
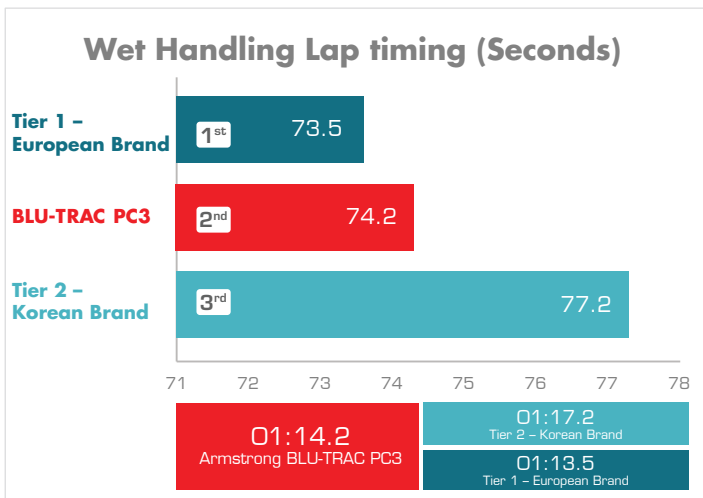
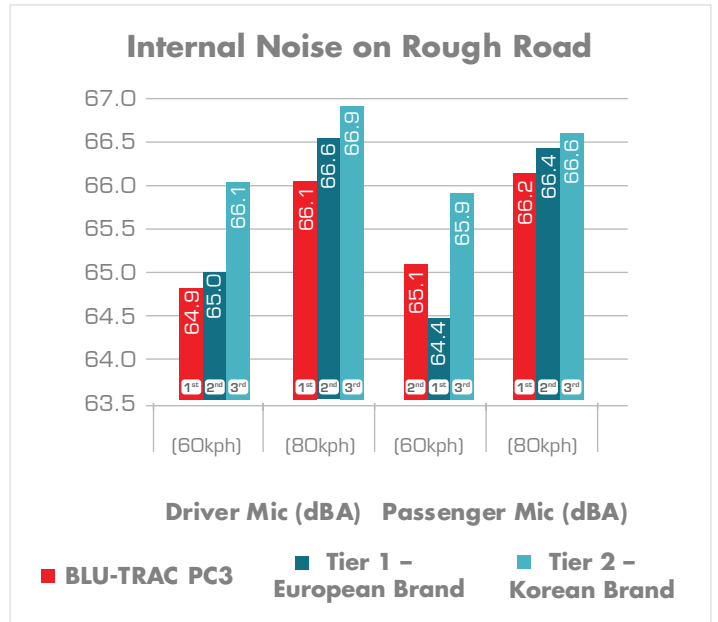
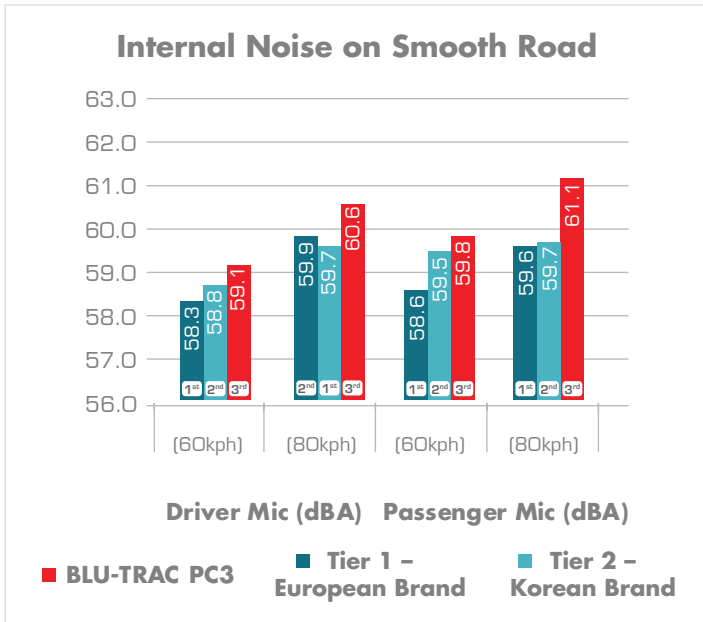
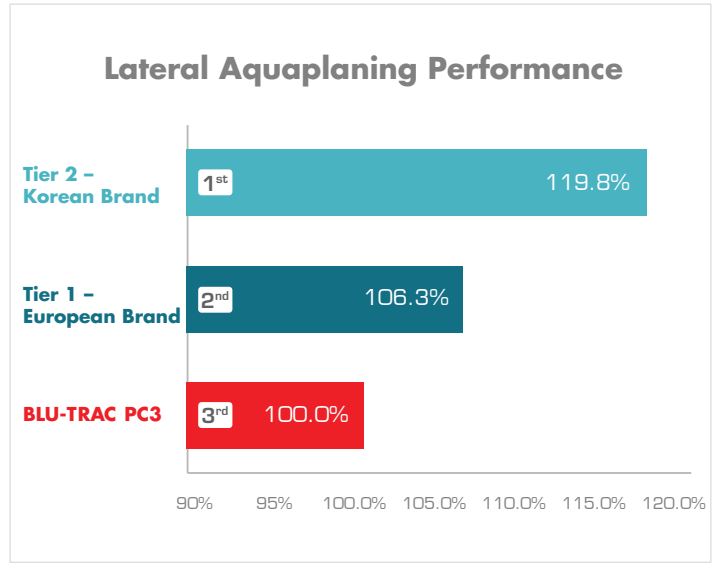
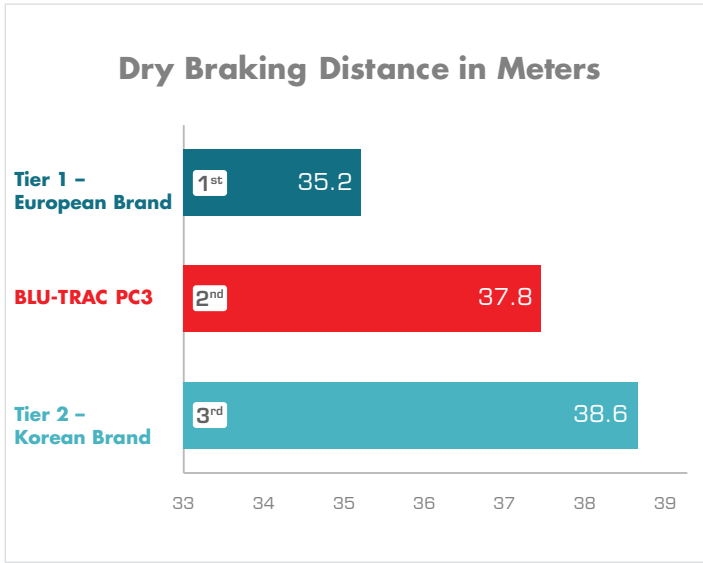
- 1. SYMMETRICAL TREAD DESIGN** features uniform tread blocks structure promotes even load distribution and consistent road contact, leading to uniform tread wear and maximizing the tyre's potential lifespan.
- 2. OPTIMIZED TREAD FOOTPRINT** contributes to a stable and smooth contact patch. This engineering choice results in a reduced road noise and an overall comfortable, quiet ride, ideal for daily commuting.
- 3. MULTIPLE CIRCUMFERENTIAL GROOVES AND WIDE SHOULDER CHANNELS** are strategically placed to channel water efficiently out of the tread contact area. This design ensures reliable traction in both dry and moderate wet conditions, significantly enhancing hydroplaning resistance.
- 4. UNIQUE SIPES DESIGN** optimized to enhance riding comfort while simultaneously minimizing noise.

## ITALIAN

- 1. DESIGN DEL BATTISTRADA SIMMETRICO** presenta una struttura uniforme dei tasselli del battistrada che favorisce una distribuzione omogenea del carico e un contatto costante con la strada, garantendo un'usura uniforme e massimizzando la durata potenziale dello pneumatico.
- 2. IMPRONTA DEL BATTISTRADA OTTIMIZZATA** contribuisce a un'area di contatto stabile e uniforme. Questa soluzione progettuale riduce il rumore stradale e offre una guida complessivamente confortevole e silenziosa, rendendolo ideale per gli spostamenti quotidiani.
- 3. MULTIPLE SCANALATURE CIRCONFERENZIALI E AMPIE** posizionate strategicamente per convogliare efficacemente l'acqua fuori dall'area di contatto del battistrada. Questo design garantisce una trazione affidabile sia su asciutto che su bagnato moderato, migliorando significativamente la resistenza all'aquaplaning.
- 4. DESIGN UNICO DELLE LAMELLE** ottimizzato per migliorare il comfort di guida riducendo contemporaneamente il rumore.

BLU-TRAC PC3												
RIM DIA	ASPECT RATIO	TYRE SIZE	LOAD INDEX/ SPEED SYMBOL	MAXIMUM LOAD	MAX. INFLATION PRESSURE	RIM WIDTH	SECTION WIDTH	OVERALL DIAMETER	TREAD DEPTH	EU LABELING RATINGS		
				KGS	PSI	INCHES	MM	MM	MM			
14	70	185/70R14	88H	560	44	5.5	189	616	7.6	C	B	68dB/B
		195/70R14	91H	615	44	6.0	201	630	7.6	C	B	69dB/B
		195/70R14	95H XL	690	50	6.0	201	630	7.6	C	B	70dB/B
	65	175/65R14	82H	475	44	5.0	177	584	7.6	C	B	68dB/B
		185/65R14	86H	530	44	5.5	189	596	7.6	C	B	68dB/B
		235/75R15	109T XL	1030	50	6.5	235	733	8.3	B	B	69dB/A
15	75	205/70R15	96H	710	44	6.0	209	669	7.8	C	A	69dB/B
		205/70R15	100H XL	800	50	6.0	209	669	7.8	B	A	70dB/B
	70	215/70R15	98H	750	44	6.5	221	683	7.8	C	B	69dB/B
		175/65R15	84H	500	44	5.0	177	609	7.8	C	B	68dB/B
		185/65R15	88H	560	44	5.5	189	621	7.8	C	B	68dB/B
		195/65R15	91H	615	44	6.0	201	635	7.8	C	B	69dB/B
		195/65R15	91V	615	44	6.0	201	635	7.8	C	B	69dB/B
		195/65R15	95H XL	690	50	6.0	201	635	7.8	C	B	70dB/B
	65	205/65R15	94V	670	44	6.0	209	647	7.8	C	A	69dB/B
		205/65R15	99H XL	775	50	6.0	209	647	7.8	B	A	70dB/B
		185/60R15	84H	500	44	5.5	189	603	7.8	C	B	68dB/B
		185/60R15	88H XL	560	50	5.5	189	603	7.8	C	B	69dB/B
195/60R15		88H	560	44	6.0	201	615	7.8	C	B	69dB/B	
195/60R15		88V	560	44	6.0	201	615	7.8	C	B	69dB/B	
60	205/60R15	91V	615	44	6.0	209	627	7.8	C	A	69dB/B	
	175/55R15	77T	412	44	5.5	182	573	7.8	C	B	68dB/B	
	185/55R15	82V	475	44	6.0	194	585	7.8	C	B	68dB/B	
	185/55R15	86V XL	530	50	6.0	194	585	7.8	C	B	69dB/B	
	55	215/65R16	98H	750	44	6.5	221	686	7.8	C	B	69dB/B
		215/65R16	102V XL	850	50	6.5	221	686	7.8	B	B	70dB/B
205/60R16		92V	630	44	6.0	209	652	7.8	C	A	69dB/B	
16	60	205/60R16	96V XL	710	50	6.0	209	652	7.8	B	A	70dB/B
		215/60R16	95V	690	44	6.5	221	664	7.8	C	B	69dB/B
		215/60R16	99V XL	775	50	6.5	221	664	7.8	B	B	70dB/B
	50	225/60R16	102W XL	850	50	6.5	228	676	7.8	B	B	69dB/A
		195/50R16	88V XL	560	50	6.0	201	602	7.8	C	B	70dB/B
		215/65R17	99V	775	44	6.5	221	712	8.0	C	B	69dB/B
17	65	215/65R17	103V XL	875	50	6.5	221	712	8.0	B	B	70dB/B
		225/60R17	99V	775	44	6.5	228	702	8.3	C	B	69dB/B
18	60	235/60R18	107V XL	975	50	7.0	240	739	8.0	B	B	69dB/A

# BLU-TRAC PC3 / TEST RESULTS



# BLU-TRAC PC



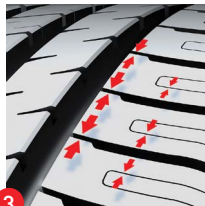
**BLU-TRAC PC** is designed to deliver a smoother ride with reduced road noise and more even tread wear, while also providing enhanced traction and braking ability in both wet and dry conditions.



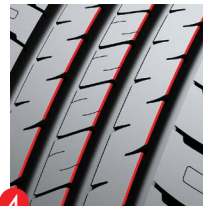
1



2



3



4

## ENGLISH

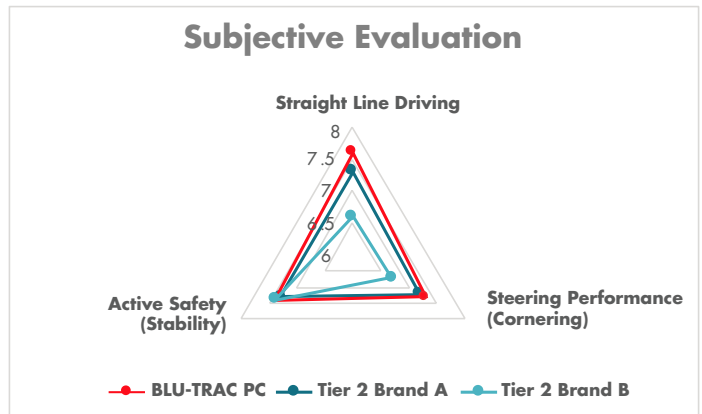
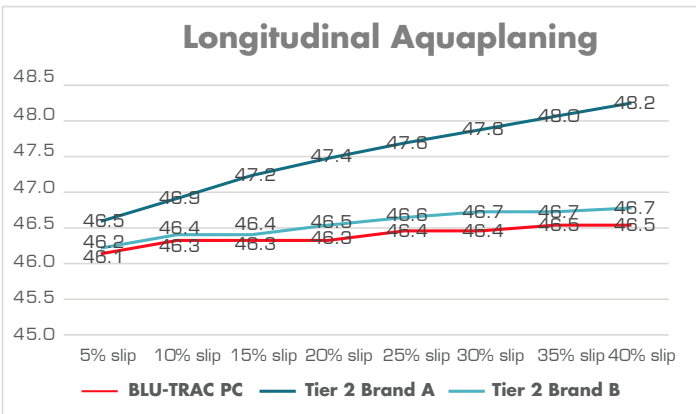
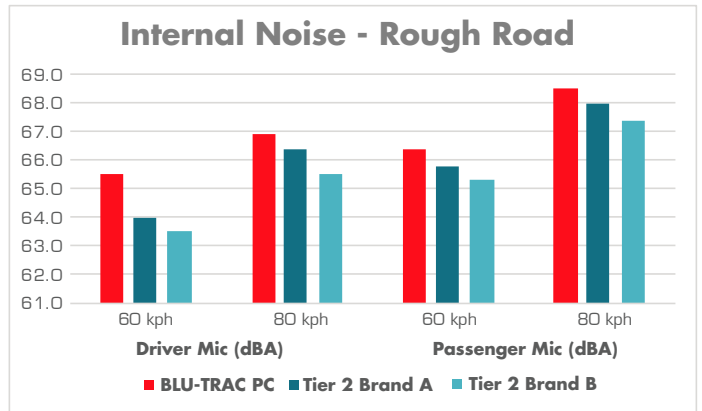
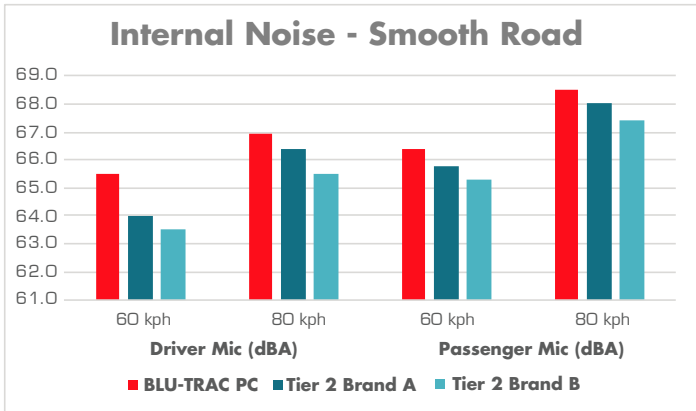
- 1. SYMMETRIC TREAD DESIGN** symmetric tread design leads to smoother rolling on the road and even tread wear throughout the tyre's lifespan.
- 2. A SET OF DYNAMIC INNER RIBS** a three-across set of inner ribs reduces road noise and improves ride comfort.
- 3. A SELF-LOCKING SIPES SYSTEM** a self-locking sipes system ensures exceptional water evacuation to enhance road traction and braking performance.
- 4. LATERAL CHAMFERED EDGES** chamfered edges of the lateral grooves reduce rolling resistance and increase tread rigidity.

## ITALIAN

- 1. DESIGN DEL BATTISTRADA SIMMETRICO** il design simmetrico del battistrada garantisce una marcia più fluida e un'usura uniforme per tutta la durata dello pneumatico.
- 2. SERIE DI NERVATURE INTERNE DINAMICHE** una serie di tre nervature interne riduce il rumore stradale e migliora il comfort di guida.
- 3. SISTEMA DI LAMELLE AUTOBLOCCANTI** il sistema di lamelle autobloccanti garantisce un'eccezionale evacuazione dell'acqua per migliorare la trazione e le prestazioni di frenata.
- 4. BORDI LATERALI SMUSSATI** I bordi smussati delle scanalature laterali riducono la resistenza al rotolamento e aumentano la rigidità del battistrada.

BLU-TRAC PC													
RIM DIA	ASPECT RATIO	TYRE SIZE	LOAD INDEX/ SPEED SYMBOL	MAXIMUM LOAD	MAX. INFLATION PRESSURE	RIM WIDTH	SECTION WIDTH	OVERALL DIAMETER	TREAD DEPTH	EU LABELING RATINGS			
				KGS	PSI	INCHES	MM	MM	MM				
13	80	155/80R13	79T	437	44	5.0	160	573	7.4	D	C	67dB/A	
		145/70R13	71T	345	44	4.5	153	530	7.7	D	C	67dB/A	
	70	155/70R13	75T	387	44	4.5	157	544	7.4	D	C	67dB/A	
		165/70R13	79T	437	44	5.0	171	557	7.5	D	C	67dB/A	
		175/70R13	82T	475	44	5.0	176	572	7.5	D	C	67dB/A	
	65	155/65R13	73T	365	44	5.0	165	529	7.5	D	C	67dB/A	
		165/65R13	77T	412	44	5.0	173	542	7.6	D	C	67dB/A	
	14	70	165/70R14	81T	462	44	5.0	171	599	7.5	D	C	67dB/A
			175/70R14	88T XL	560	50	5.0	176	599	7.3	D	C	68dB/A
			185/70R14	88H	560	44	5.5	193	616	7.5	D	C	70dB/B
195/70R14			95H XL	690	50	5.5	199	630	7.5	D	C	72dB/B	
65		155/65R14	75T	387	44	5.0	164	555	7.5	D	C	67dB/A	
		165/65R14	79T	437	44	5.0	172	568	7.5	D	C	67dB/A	
		175/65R14	82H	475	44	5.0	185	584	7.6	D	C	70dB/B	
60		165/60R14	75H	387	44	5.0	171	553	7.7	D	C	67dB/A	
		185/60R14	82H	475	44	5.5	189	575	7.4	D	C	67dB/A	
55		165/55R14	72T	355	44	5.0	168	537	7.5	D	C	67dB/A	
15	75	235/75R15	109T XL	1030	50	6.5	237	729	10.4	D	C	72dB/B	
	70	215/70R15	98H	750	44	6.5	224	681	7.7	D	C	71dB/B	
	65	175/65R15	84H	500	44	5.5	179	606	7.6	D	C	67dB/A	
		185/65R15	88H	560	44	5.5	188	621	7.3	D	C	70dB/B	
		195/65R15	95H XL	690	50	6.0	201	636	7.4	D	C	72dB/B	
		195/65R15	91V	615	44	6.0	201	636	7.4	D	C	71dB/B	
		205/65R15	99H XL	775	50	6.0	208	645	7.6	D	C	72dB/B	
	60	175/60R15	81H	462	44	5.5	181	590	8.0	D	C	67dB/A	
		185/60R15	88H XL	560	50	5.5	186	600	8.0	D	C	68dB/A	
	50	165/50R15	76T XL	400	50	5.0	165	547	7.8	D	C	67dB/A	
16	65	205/65R16	95V	690	44	6.0	208	671	8.6	D	C	68dB/A	
		215/65R16	102H XL	850	50	6.5	221	683	7.6	D	C	72dB/B	
	60	195/60R16	89V	580	44	6.0	199	639	7.4	D	C	71dB/B	
		205/60R16	92V	630	44	6.0	204	651	7.5	D	C	71dB/B	
		215/60R16	99V XL	775	50	6.0	213	663	7.7	D	C	72dB/B	
		225/60R16	102V XL	850	50	6.5	226	673	7.7	D	C	72dB/B	
		235/60R16	100V	800	44	7.0	236	685	7.9	D	C	68dB/A	
	55	185/55R16	87H XL	545	50	6.0	191	610	7.6	D	C	67dB/A	
		205/55R16	91H	615	44	6.5	208	632	7.4	D	C	71dB/B	
		205/55R16	94V XL	670	50	6.5	208	632	7.4	D	C	72dB/B	
17	65	215/65R17	99V	775	44	7.0	228	715	7.6	D	C	71dB/B	
	60	225/60R17	99H	775	44	7.0	232	705	8.1	D	C	71dB/B	
		225/60R17	99V	775	44	7.0	232	705	8.1	D	C	71dB/B	

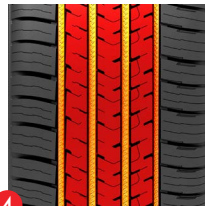
# BLU-TRAC PC / TEST RESULTS



# BLU-TRAC HP3



**BLU-TRAC HP3** is the 3<sup>rd</sup> generation high-performance tyre featuring an optimized asymmetric tread design with distinct inner and outer shoulder blocks for improved wet-road traction and handling stability. The solid outer blocks enhance cornering grip on dry surfaces, while the inner blocks aid in water evacuation. Additionally, the high-density siping includes zig-zag and straight-line patterns that create multiple biting edges for superior braking performance in both dry and wet conditions.







## ENGLISH

- 1. OPTIMIZED ASYMMETRIC TREAD DESIGN** features distinct inner and outer shoulder blocks designed to balance wet-road traction and handling stability. The solid outer blocks enhance cornering grip on dry pavement, while the inner blocks assist with water evacuation.
- 2. HIGH-DENSITY UNIQUE SIPING** incorporates a high volume of zig-zag and straight-line sipes across the inner ribs. This design is engineered to create numerous biting edges, providing superior dry and wet braking performance.
- 3. CIRCUMFERENTIAL GROOVES** utilizes four prominent, deep, and continuous longitudinal channels that are crucial for rapid and efficient hydroplaning resistance by quickly evacuating large volumes of water away from the tyre's contact patch.
- 4. THREE MAIN SOLID RIBS WITH GROOVE-BOTTOM PATTERNS** feature a connected configuration that contributes to a stable, quiet ride, improved steering response, and consistent road contact—essential for high-speed performance.

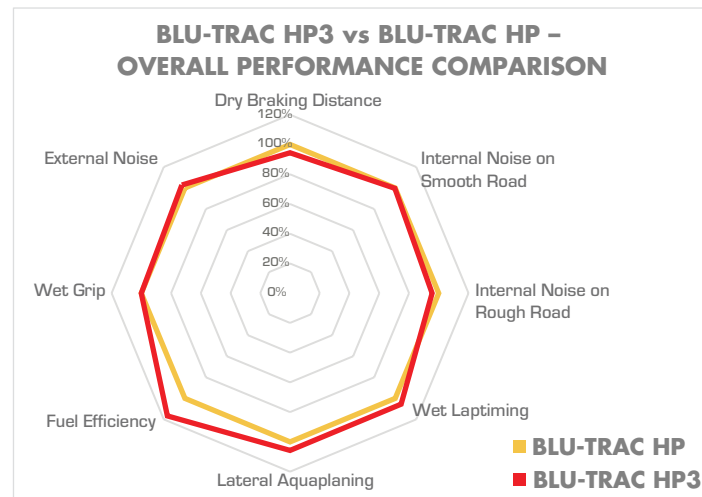
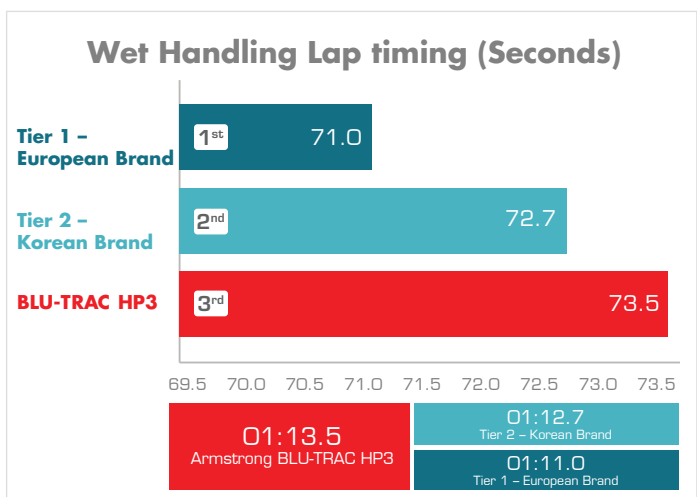
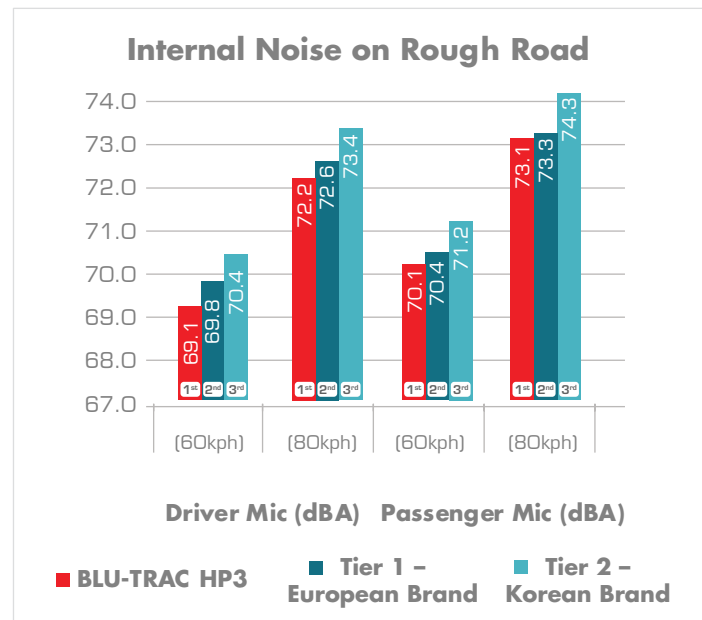
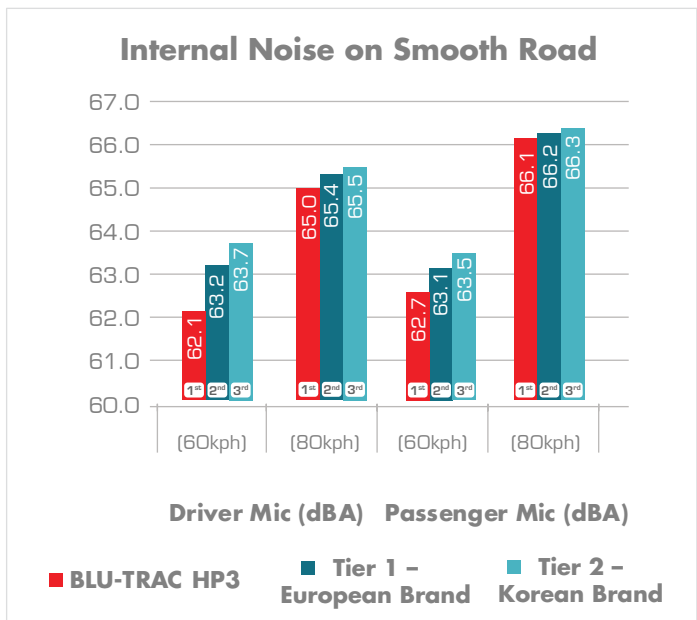
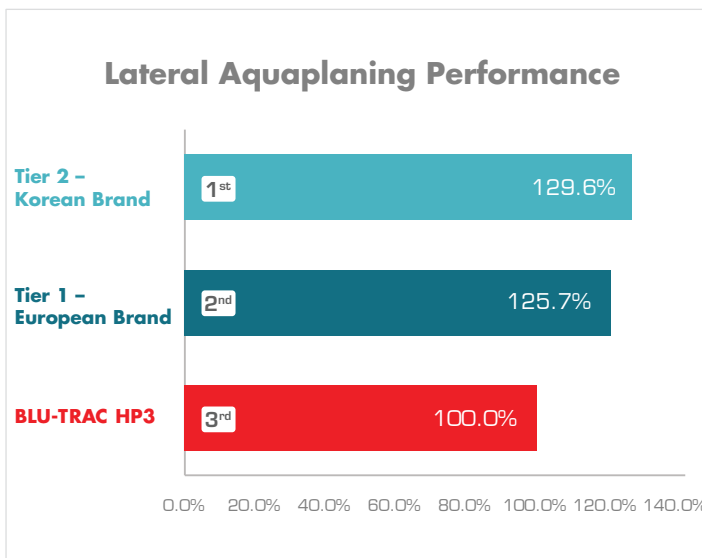
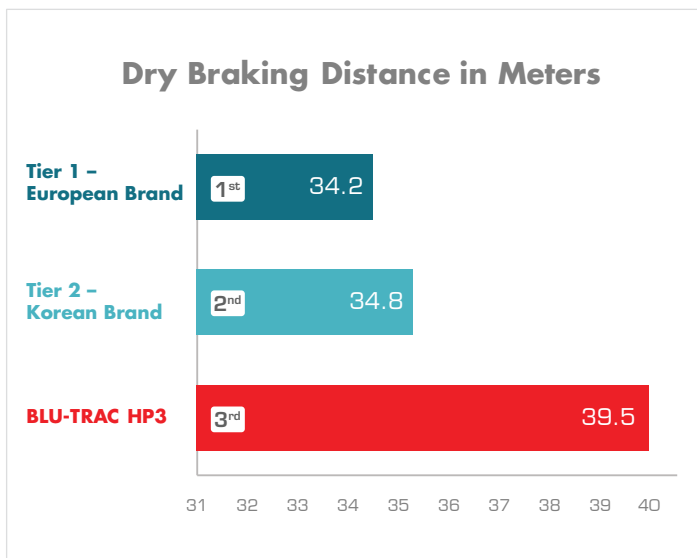
## ITALIAN

- 1. DESIGN OTTIMIZZATO DEL BATTISTRADA ASIMMETRICO** presenta distinti blocchi della spalla interna ed esterna progettati per bilanciare la trazione sul bagnato e la stabilità di guida. I solidi blocchi esterni migliorano l'aderenza in curva sull'asciutto, mentre quelli interni favoriscono l'evacuazione dell'acqua.
- 2. LAMELLE AD ALTA DENSITÀ E DESIGN ESCLUSIVO** integra un elevato numero di lamelle a zig-zag e lineari sulle nervature interne. Questo design è studiato per creare numerosi spigoli di aderenza, offrendo prestazioni di frenata superiori sia sull'asciutto che sul bagnato.
- 3. SCANALATURE CIRCUMFERENZIALI** utilizza quattro ampi, profondi e continui canali longitudinali fondamentali per garantire una rapida ed efficace resistenza all'aquaplaning, evacuando velocemente grandi volumi d'acqua dall'area di contatto dello pneumatico con la strada.
- 4. TRE NERVATURE PRINCIPALI SOLIDE CON MOTIVI ALLA BASE DELLE SCANALATURE** Presentano una configurazione collegata che contribuisce a una guida stabile e silenziosa, a una migliore risposta dello sterzo e a un contatto costante con la strada, elementi essenziali per le prestazioni ad alta velocità.

BLU-TRAC HP3												
RIM DIA	ASPECT RATIO	TYRE SIZE	LOAD INDEX/SPEED SYMBOL	MAXIMUM LOAD	MAX. INFLATION PRESSURE	RIM WIDTH	SECTION WIDTH	OVERALL DIAMETER	TREAD DEPTH	EU LABELING RATINGS		
				KGS	PSI	INCHES	MM	MM	MM			
15	55	205/55R15	88V	560	44	6.5	214	607	7.8	C	A	69dB/B
		205/55R15	92V XL	630	50	6.5	214	607	7.8	C	A	70dB/B
	50	205/50R15	86V	530	44	6.5	214	587	8.0	C	A	69dB/B
		205/50R15	89W XL	580	50	6.5	214	587	8.0	C	A	70dB/B
16	55	205/55R16	91V	615	44	6.5	214	632	7.8	C	A	69dB/B
		205/55R16	94V XL	670	50	6.5	214	632	7.8	C	A	70dB/B
		205/55R16	94W XL	670	50	6.5	214	632	7.8	C	A	70dB/B
		215/55R16	97W XL	730	50	7.0	226	642	7.8	C	B	70dB/B
	50	225/55R16	99Y XL	775	50	7.0	233	654	7.8	C	B	70dB/B
		205/50R16	87W	545	44	6.5	214	612	7.8	C	A	69dB/B
		205/50R16	91W XL	615	50	6.5	214	612	7.8	C	A	70dB/B
		205/55R17	95W XL	690	50	6.5	214	658	7.8	C	A	70dB/B
17	55	215/55R17	94V	670	44	7.0	226	668	7.8	C	B	69dB/B
		215/55R17	98W XL	750	50	7.0	226	668	7.8	C	B	70dB/B
		225/55R17	101Y XL	825	50	7.0	233	680	7.8	C	B	70dB/B
		205/50R17	93W XL	650	50	6.5	214	638	7.8	C	A	70dB/B
	50	215/50R17	95W XL	690	50	7.0	226	648	7.8	C	B	70dB/B
		225/50R17	98Y XL	750	50	7.0	233	658	7.8	C	B	70dB/B
		245/50R17	99W	775	44	7.5	253	678	8.0	C	B	69dB/B
		205/45R17	88W XL	560	50	7.0	206	616	7.8	C	A	70dB/B
18	45	215/45R17	91Y XL	615	50	7.0	213	626	7.8	C	B	70dB/B
		225/45R17	91Y	615	44	7.5	225	634	7.8	C	B	69dB/B
		225/45R17	94Y XL	670	50	7.5	225	634	7.8	C	B	70dB/B
		235/45R17	97Y XL	730	50	8.0	236	644	8.0	C	B	70dB/B
	40	245/45R17	99Y XL	775	50	8.0	243	652	7.8	C	B	70dB/B
		205/40R17	84W XL	500	50	7.5	212	596	7.8	C	A	70dB/B
		245/40R17	95Y XL	690	50	8.5	248	628	7.8	C	B	70dB/B
		225/50R18	95W	690	44	7.0	233	683	7.8	C	B	69dB/B
19	50	225/50R18	99W XL	775	50	7.0	233	683	7.8	C	B	70dB/B
		235/50R18	97V	730	44	7.5	245	693	7.8	C	B	69dB/B
		235/50R18	101Y XL	825	50	7.5	245	693	7.8	C	B	70dB/B
		245/50R18	100Y	800	44	7.5	253	703	8.0	C	B	69dB/B
	45	245/50R18	104W XL	900	50	7.5	253	703	8.0	C	B	70dB/B
		215/45R18	93Y XL	650	50	7.0	213	651	7.8	C	B	70dB/B
		225/45R18	95Y XL	690	50	7.5	225	659	7.8	C	B	70dB/B
		235/45R18	98Y XL	750	50	8.0	236	669	7.8	C	B	70dB/B
20	40	245/45R18	100Y XL	800	50	8.0	243	677	7.8	C	B	70dB/B
		225/40R18	92Y XL	630	50	8.0	230	637	7.8	C	B	70dB/B
		235/40R18	95Y XL	690	50	8.5	241	645	7.8	C	B	70dB/B
		245/40R18	97Y XL	730	50	8.5	248	653	7.8	C	B	70dB/B
	35	275/40R18	103Y XL	875	50	9.5	278	677	8.0	C	B	71dB/B
		215/35R18	84W XL	500	50	7.5	218	607	8.0	C	B	70dB/B
		265/35R18	97Y XL	730	50	9.5	271	643	8.0	C	B	71dB/B
		225/45R19	96Y XL	710	50	7.5	225	685	8.0	C	B	70dB/B
19	45	235/45R19	99Y XL	775	50	8.0	236	695	8.0	C	B	70dB/B

BLU-TRAC HP3													
RIM DIA	ASPECT RATIO	TYRE SIZE	LOAD INDEX/SPEED SYMBOL	MAXIMUM LOAD	MAX. INFLATION PRESSURE	RIM WIDTH	SECTION WIDTH	OVERALL DIAMETER	TREAD DEPTH	EU LABELING RATINGS			
				KGS	PSI	INCHES	MM	MM	MM				
19	45	245/45R19	102Y XL	850	50	8.0	243	703	8.0	C	B	70dB/B	
	40	245/40R19	98Y XL	750	50	8.5	248	679	8.0	C	B	70dB/B	
		255/40R19	100Y XL	800	50	9.0	260	687	8.0	C	A	71dB/B	
		275/40R19	105Y XL	925	50	9.5	278	703	8.0	C	B	71dB/B	
20	40	245/40R20	99Y XL	775	50	8.5	248	704	8.0	C	B	70dB/B	
		255/40R20	101Y XL	825	50	9.0	260	712	8.0	C	A	71dB/B	
	35	245/35R20	95Y XL	690	50	8.5	248	680	8.0	C	B	70dB/B	
		255/35R20	97Y XL	730	50	9.0	260	686	8.0	C	A	71dB/B	
		275/35R20	102Y XL	850	50	9.5	278	700	8.0	C	B	71dB/B	

# BLU-TRAC HP3 / TEST RESULTS



# BLU-TRAC HP



This ultra-high performance tyre features circumferential and sub-straight grooves that delivers enhanced water evacuation, handling, and stability. Its sipe design provides increased grip, safety, and comfort, while a silent groove wall reduces outside noise.



## ENGLISH

- 1. FOUR WIDE CIRCUMFERENTIAL GROOVES** these four grooves, which span the circumference of the tyre, work in conjunction with the lateral grooves to evacuate water rapidly, leading to improved handling and traction.
- 2. A VARIETY OF SIPE DESIGNS** a variety of sipes distributed on the inner ribs create extra gripping surfaces for enhanced safety and ride comfort.
- 3. SUB-STRAIGHT GROOVES** sub-straight grooves in the outer shoulders improve cornering precision and stability.
- 4. AN INNOVATIVE SILENT GROOVE WALL** the silent groove wall reduces outer noise by disrupting the airflow through vertical serrations.

## ITALIAN

- 1. QUATTRO AMPIE SCANALATURE CIRCUMFERENZIALI** queste quattro scanalature, che si estendono lungo tutta la circonferenza dello pneumatico, lavorano insieme alle scanalature laterali per evacuare rapidamente l'acqua, migliorando la maneggevolezza e la trazione.
- 2. UNA VARIETÀ DI DESIGN DELLE LAMELLE** una varietà di lamelle distribuite sulle nervature interne crea superfici aggiuntive di aderenza per una maggiore sicurezza e comfort di guida.
- 3. SCANALATURE SUB-RETTILINEE** le scanalature sub-rettilinee nelle spalle esterne migliorano la precisione in curva e la stabilità.
- 4. UN'INNOVATIVA PARETE SILENZIOSA DELLA SCANALATURA** la parete silenziosa della scanalatura riduce il rumore esterno interrompendo il flusso d'aria attraverso intagli verticali.

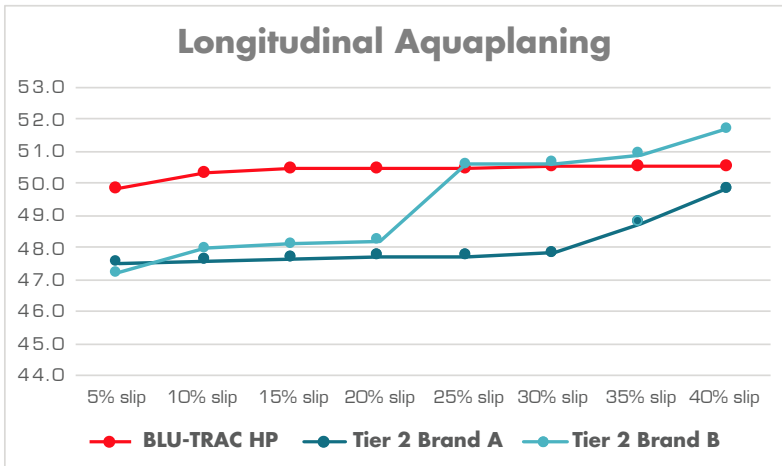
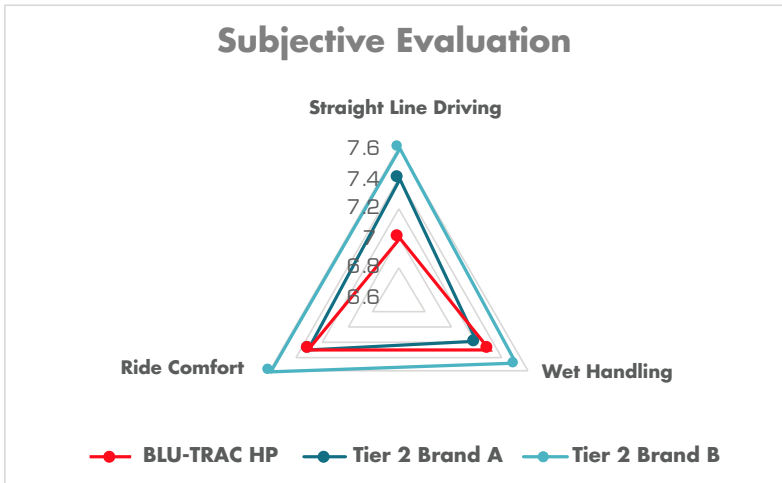
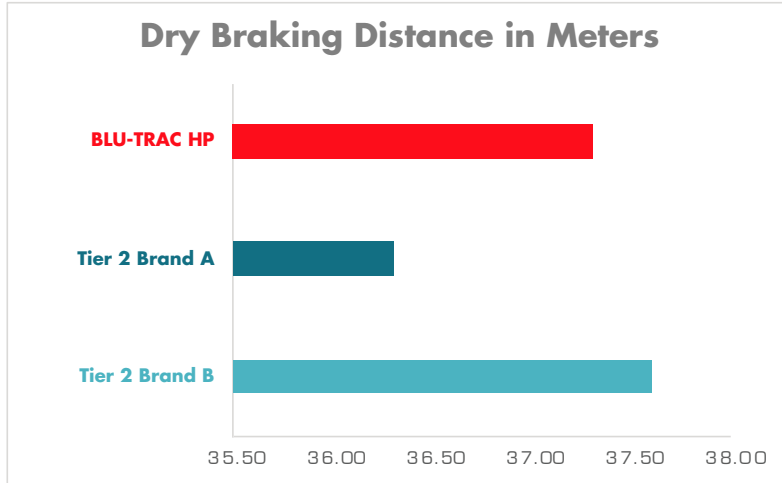
BLU-TRAC HP												
RIM DIA	ASPECT RATIO	TYRE SIZE	LOAD INDEX/SPEED SYMBOL	MAXIMUM LOAD	MAX. INFLATION PRESSURE	RIM WIDTH	SECTION WIDTH	OVERALL DIAMETER	TREAD DEPTH	EU LABELING RATINGS		
				KGS	PSI	INCHES	MM	MM	MM			
14	55	185/55R14	80H	450	44	6.0	193	560	7.7	D	A	67dB/A
15	55	185/55R15	82V	475	44	6.0	193	585	8.1	D	A	67dB/A
		195/55R15	85V	515	44	6.0	201	594	7.6	D	A	68dB/A
15	50	195/50R15	86V XL	530	50	6.0	198	576	8.0	D	A	69dB/A
		195/55R16	91V XL	615	50	6.0	202	621	7.7	D	A	69dB/A
16	55	205/55R16	94W XL	670	50	6.5	213	630	7.3	D	A	72dB/B
		215/55R16	97W XL	730	50	7.0	227	640	7.5	D	A	72dB/B
		225/55R16	99W XL	775	50	7.0	228	651	7.5	D	A	72dB/B
	50	195/50R16	88V XL	560	50	6.0	198	603	8.1	D	A	69dB/A
		205/50R16	87Y	545	44	6.5	208	611	7.6	D	A	71dB/B
		225/50R16	92W	630	44	7.0	235	630	8.0	D	A	68dB/A
16	45	195/45R16	84V XL	500	50	6.5	192	583	7.9	D	A	69dB/A
		205/45R16	87W XL	545	50	7.0	206	589	7.7	D	A	69dB/A
16	45	215/45R16*	90W XL	600	50	7.0	210	601	7.5	D	A	72dB/B
		60	215/60R17	96H	710	44	6.5	220	689	8.1	D	A
17	55	205/55R17	95W XL	690	50	6.5	208	663	7.4	D	A	72dB/B
		215/55R17	98W XL	750	50	7.0	227	672	7.5	D	A	72dB/B
		225/55R17	101W XL	825	50	7.0	229	684	7.6	D	A	72dB/B
		235/55R17	103W XL	875	50	7.5	247	689	7.6	D	A	69dB/A
		205/50R17	93W XL	650	50	7.0	213	642	7.5	D	A	72dB/B
	50	215/50R17	95W XL	690	50	7.0	218	650	7.6	D	A	72dB/B
		225/50R17	98W XL	750	50	7.0	226	660	7.6	D	A	72dB/B
		235/50R17	100Y XL	800	50	7.5	242	668	7.3	D	A	72dB/B
		245/50R17	99W	775	44	7.5	250	677	7.9	D	A	69dB/A
		205/45R17	88W XL	560	50	7.0	205	617	7.8	D	A	69dB/A
17	45	215/45R17	91W XL	615	50	7.0	211	629	7.5	D	A	72dB/B
		225/45R17	94Y XL	670	50	7.5	221	636	7.5	D	A	72dB/B
		235/45R17	97W XL	730	50	7.0	221	646	7.5	D	A	72dB/B
		245/45R17	99W XL	775	50	8.0	243	652	7.4	D	A	69dB/A
		195/40R17*	81V XL	462	50	7.0	195	591	7.5	D	A	72dB/B
	40	205/40R17	84Y XL	500	50	7.5	206	601	7.5	D	A	72dB/B
		215/40R17	87W XL	545	50	7.5	218	608	8.0	D	A	69dB/A
		245/40R17	95W XL	690	50	8.5	246	628	7.6	D	A	69dB/A
		255/40R17*	98W XL	750	50	9.0	255	637	7.4	D	A	70dB/A
		225/35R17*	86Y XL	530	50	8.0	225	592	7.4	D	A	72dB/B
18	60	225/60R18	100H	800	44	7.0	235	726	8.0	D	A	68dB/A
		215/50R18*	96W XL	710	50	7.0	222	679	7.5	D	A	72dB/B
		225/50R18	99W XL	775	50	7.0	225	685	7.5	D	A	72dB/B
	50	235/50R18	101W XL	825	50	7.5	244	695	7.9	D	A	69dB/A
		245/50R18	104W XL	900	50	7.0	249	705	7.7	D	A	69dB/A
		215/45R18	93Y XL	650	50	7.0	207	657	7.8	D	A	72dB/B
18	45	225/45R18	95W XL	690	50	7.5	224	663	7.6	D	A	72dB/B
		235/45R18	98W XL	750	50	8.0	235	669	7.5	D	A	69dB/A
18	45	245/45R18	100W XL	800	50	8.0	238	678	7.4	D	A	72dB/B

\* Newly released sizes

BLU-TRAC HP														
RIM DIA	ASPECT RATIO	TYRE SIZE	LOAD INDEX/SPEED SYMBOL		MAXIMUM LOAD	MAX. INFLATION PRESSURE	RIM WIDTH	SECTION WIDTH	OVERALL DIAMETER	TREAD DEPTH	EU LABELING RATINGS			
					KGS	PSI	INCHES	MM	MM	MM				
18	45	255/45R18	103W	XL	875	50	8.5	254	686	7.7	D	A	70dB/A	
		205/40R18	86Y	XL	530	50	7.5	213	626	8.1	D	A	72dB/B	
		215/40R18*	89Y	XL	580	50	7.5	214	634	7.5	D	A	72dB/B	
		225/40R18	92Y	XL	630	50	8.0	228	640	7.5	D	A	72dB/B	
	40	235/40R18	95W	XL	690	50	8.5	242	646	7.6	D	A	69dB/A	
		245/40R18	97W	XL	730	50	8.0	237	654	7.5	D	A	72dB/B	
		255/40R18	99Y	XL	775	50	8.5	253	666	7.2	D	A	70dB/A	
		275/40R18	103Y	XL	875	50	9.5	273	678	7.1	D	A	71dB/B	
	35	225/35R18*	87Y	XL	545	50	8.0	222	617	7.2	D	A	72dB/B	
		245/35R18*	92Y	XL	630	50	8.5	241	631	7.3	D	A	69dB/A	
		255/35R18	94W	XL	670	50	8.5	247	633	7.7	D	A	70dB/A	
		265/35R18	97Y	XL	730	50	10.0	267	638	4.9	D	A	71dB/B	
	19	45	275/35R18	99Y	XL	775	50	10.0	274	642	5.3	D	A	71dB/B
			235/45R19	99Y	XL	775	50	8.0	233	695	7.5	D	A	72dB/B
			245/45R19	102Y	XL	850	50	8.0	238	708	7.6	D	A	69dB/A
			255/45R19*	104Y	XL	900	50	8.5	252	717	7.2	D	A	70dB/A
40		225/40R19	93Y	XL	650	50	8.0	222	671	7.3	D	A	72dB/B	
		235/40R19	96Y	XL	710	50	8.0	234	671	7.4	D	A	72dB/B	
		245/40R19	98Y	XL	750	50	8.0	235	689	7.5	D	A	69dB/A	
		255/40R19	100Y	XL	800	50	9.0	255	691	7.8	D	A	70dB/A	
35		275/40R19	105Y	XL	925	50	9.5	269	710	6.5	D	A	71dB/B	
		215/35R19*	85Y	XL	515	50	7.5	212	639	7.4	D	A	72dB/B	
		225/35R19	88W	XL	560	50	8.0	224	643	7.9	D	A	69dB/A	
		235/35R19	91W	XL	615	50	8.0	226	649	7.8	D	A	69dB/A	
30		245/35R19	93W	XL	650	50	8.0	234	657	7.6	D	A	69dB/A	
		255/35R19	96W	XL	710	50	9.0	257	661	7.4	D	A	70dB/A	
		265/35R19	98Y	XL	750	50	9.0	261	671	6.9	D	A	71dB/B	
		275/35R19	100Y	XL	800	50	9.5	270	684	6.6	D	A	71dB/B	
20	40	265/30R19*	93Y	XL	650	50	9.5	263	646	7.3	D	A	71dB/B	
		235/40R20*	96Y	XL	710	50	8.5	236	702	7.2	D	A	72dB/B	
		245/40R20	99Y	XL	775	50	8.5	245	708	6.7	D	A	69dB/A	
		255/40R20*	101Y	XL	825	50	9.0	255	718	7.3	D	A	70dB/A	
	35	225/35R20	90Y	XL	600	50	8.0	225	674	7.6	D	A	72dB/B	
		235/35R20*	92Y	XL	630	50	8.5	239	676	7.3	D	A	72dB/B	
		245/35R20	95Y	XL	690	50	8.5	233	687	7.5	D	A	72dB/B	
		255/35R20	97Y	XL	730	50	8.5	260	697	6.6	D	A	70dB/A	
	30	275/35R20	102Y	XL	850	50	9.5	275	711	6.5	D	A	71dB/B	
		225/30R20*	85Y	XL	515	50	8.0	222	634	7.5	D	A	72dB/B	
		245/30R20*	90Y	XL	600	50	8.5	234	662	7.3	D	A	69dB/A	
		255/30R20*	92Y	XL	630	50	9.0	255	662	7.2	D	A	71dB/B	
	21	35	275/35R21	103Y	XL	875	50	9.5	272	737	6.3	D	A	71dB/B

\* Newly released sizes

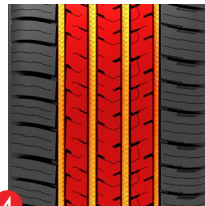
# BLU-TRAC HP / TEST RESULTS



# TRU-TRAC SU3



**TRU-TRAC SU3** is the 3rd generation SUV tyre featuring an optimized asymmetric tread design with distinct inner and outer shoulder blocks for improved wet-road traction and handling stability. The solid outer blocks enhance cornering grip on dry surfaces, while the inner blocks aid in water evacuation. Additionally, the high-density siping includes zig-zag and straight-line patterns that create multiple biting edges for superior braking performance in both dry and wet conditions.



**ENGLISH**

- 1. OPTIMIZED ASYMMETRIC TREAD DESIGN** features distinct inner and outer shoulder blocks designed to balance wet-road traction and handling stability. The solid outer blocks enhance cornering grip on dry pavement, while the inner blocks assist with water evacuation.
- 2. HIGH-DENSITY UNIQUE SIPING** incorporates a high volume of zig-zag and straight-line sipes across the inner ribs. This design is engineered to create numerous biting edges, providing superior dry and wet braking performance.
- 3. CIRCUMFERENTIAL GROOVES** utilizes four prominent, deep, and continuous longitudinal channels that are crucial for rapid and efficient hydroplaning resistance by quickly evacuating large volumes of water away from the tyre's contact patch.
- 4. THREE MAIN SOLID RIBS WITH GROOVE-BOTTOM PATTERNS** feature a connected configuration that contributes to a stable, quiet ride, improved steering response, and consistent road contact—essential for high-speed performance.

**ITALIAN**

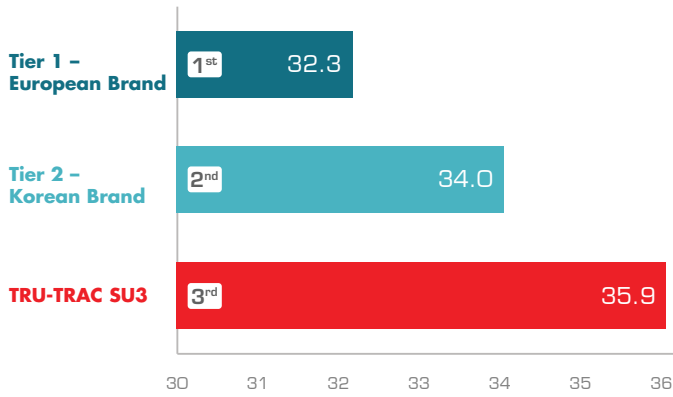
- 1. DESIGN OTTIMIZZATO DEL BATTISTRADA ASIMMETRICO** presenta distinti blocchi della spalla interna ed esterna progettati per bilanciare la trazione sul bagnato e la stabilità di guida. I solidi blocchi esterni migliorano l'aderenza in curva sull'asciutto, mentre quelli interni favoriscono l'evacuazione dell'acqua.
- 2. LAMELLE AD ALTA DENSITÀ E DESIGN ESCLUSIVO** integra un elevato numero di lamelle a zig-zag e lineari sulle nervature interne. Questo design è studiato per creare numerosi spigoli di aderenza, offrendo prestazioni di frenata superiori sia sull'asciutto che sul bagnato.
- 3. SCANALATURE CIRCUMFERENZIALI** utilizza quattro ampi, profondi e continui canali longitudinali fondamentali per garantire una rapida ed efficace resistenza all'aquaplaning, evacuando velocemente grandi volumi d'acqua dall'area di contatto dello pneumatico con la strada.
- 4. TRE NERVATURE PRINCIPALI SOLIDE CON MOTIVI ALLA BASE DELLE SCANALATURE** Presentano una configurazione collegata che contribuisce a una guida stabile e silenziosa, a una migliore risposta dello sterzo e a un contatto costante con la strada, elementi essenziali per le prestazioni ad alta velocità.

**TRU-TRAC SU3**

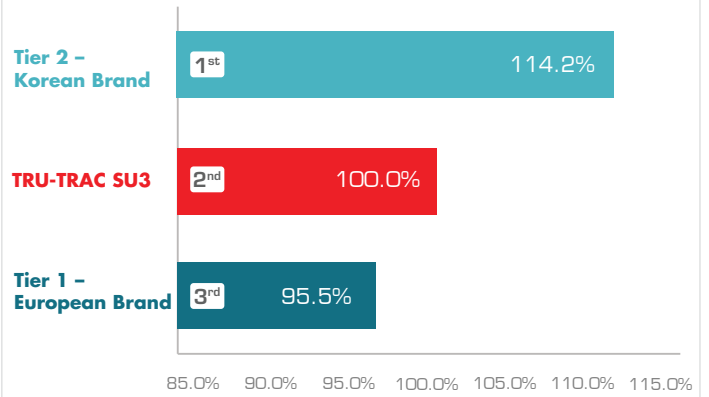
RIM DIA	ASPECT RATIO	TYRE SIZE	LOAD INDEX/SPEED SYMBOL	MAXIMUM LOAD	MAX. INFLATION PRESSURE	RIM WIDTH	SECTION WIDTH	OVERALL DIAMETER	TREAD DEPTH	EU LABELING RATINGS		
				KGS	PSI	INCHES	MM	MM	MM			
17	65	235/65R17	108V XL	1000	50	7.0	240	738	8.0	B	B	70dB/B
	65	235/65R18	106W	950	44	7.0	240	763	8.0	C	B	69dB/B
18	60	235/60R18	107W XL	975	50	7.0	240	739	8.5	C	B	70dB/B
		245/60R18	105V	925	44	7.0	248	751	8.0	C	B	69dB/B
	55	235/55R18	104V XL	900	50	7.5	245	715	8.0	C	B	70dB/B
		255/55R18	109Y XL	1030	50	8.0	265	737	8.0	B	A	71dB/B
19	60	255/60R19	113V XL	1150	50	7.5	260	789	8.0	B	A	71dB/B
	55	235/55R19	105W XL	925	50	7.5	245	741	8.0	C	B	70dB/B
	50	255/50R19	107Y XL	975	50	8.0	265	739	8.0	C	A	71dB/B
20	60	275/60R20	115H	1215	44	8.0	279	838	8.3	B	B	70dB/B
		235/55R20	102V	850	44	7.5	245	766	8.0	C	B	69dB/B
		235/55R20	105W XL	925	50	7.5	245	766	8.0	C	B	70dB/B
		275/55R20	117V XL	1285	50	8.5	284	810	8.3	B	B	71dB/B
	50	245/50R20	102V	850	44	7.5	253	754	8.0	C	B	69dB/B
		245/50R20	105V XL	925	50	7.5	253	754	8.0	C	B	70dB/B
		265/50R20	111W XL	1090	50	8.5	277	774	8.0	B	B	71dB/B
		245/45R20	103Y XL	875	50	8.0	243	728	8.0	C	B	70dB/B
45	255/45R20	105Y XL	925	50	8.5	255	738	8.0	C	A	71dB/B	
40	275/40R20	106Y XL	950	50	9.5	278	728	8.3	C	B	71dB/B	
22	50	275/50R22	111V	1090	44	8.5	284	835	8.3	B	B	70dB/B
		275/45R22	112W XL	1120	50	9.0	273	807	8.3	B	B	71dB/B
	45	285/45R22	114Y XL	1180	50	9.5	285	815	8.3	B	B	73dB/B
		305/45R22	118W XL	1320	50	10.0	303	833	8.3	B	B	73dB/B
	40	305/40R22	114W XL	1180	50	11.0	313	803	8.3	B	B	73dB/B
35	265/35R22	102Y XL	850	50	9.5	271	745	8.0	C	B	71dB/B	
24	35	295/35R24	110W XL	1060	50	10.5	301	816	8.3	B	B	73dB/B
		305/35R24	112W XL	1120	50	11.0	313	824	8.3	B	B	73dB/B

# TRU-TRAC SU3 / TEST RESULTS

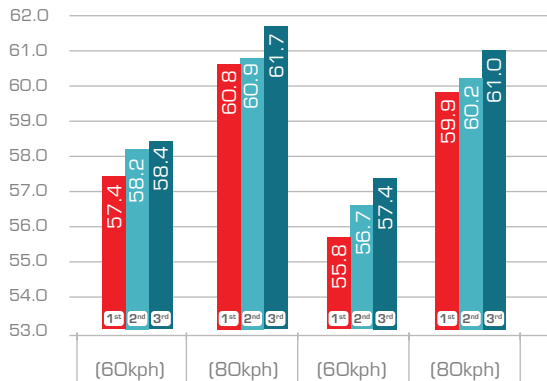
## Dry Braking Distance in Meters



## Lateral Aquaplaning Performance



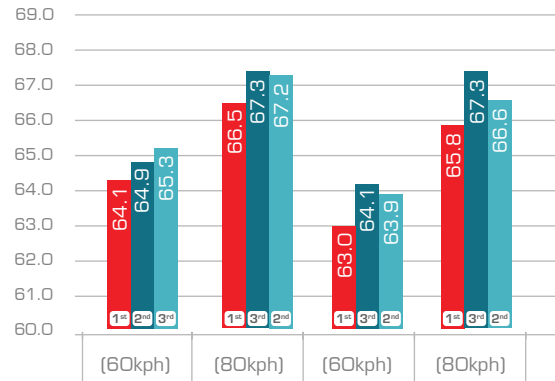
## Internal Noise on Smooth Road



Driver Mic (dBA) Passenger Mic (dBA)

■ TRU-TRAC SU3 ■ Tier 1 - European Brand ■ Tier 2 - Korean Brand

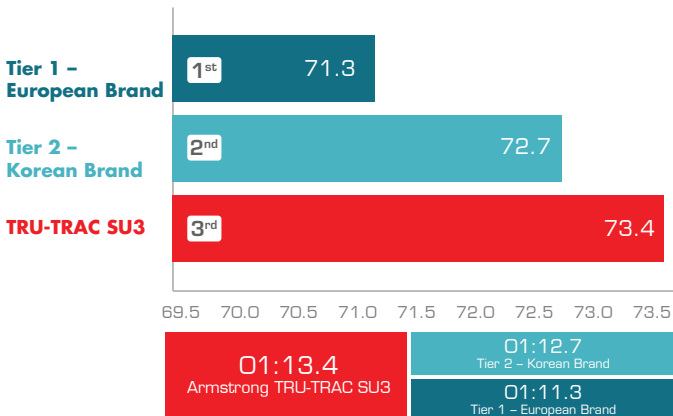
## Internal Noise on Rough Road



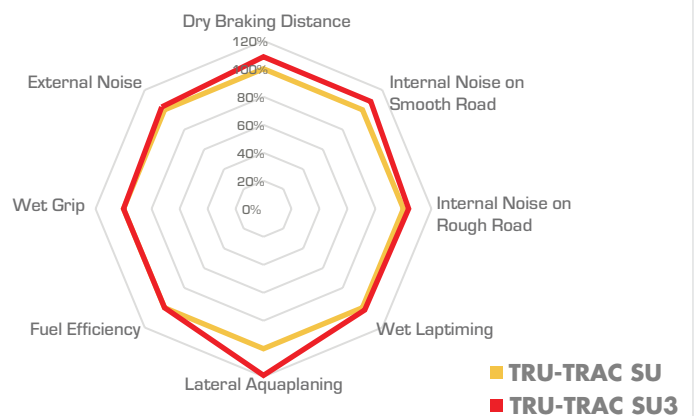
Driver Mic (dBA) Passenger Mic (dBA)

■ TRU-TRAC SU3 ■ Tier 1 - European Brand ■ Tier 2 - Korean Brand

## Wet Handling Lap timing (Seconds)



## TRU-TRAC SU3 vs TRU-TRAC SU - OVERALL PERFORMANCE COMPARISON



# TRU-TRAC SU



**True to the Armstrong TRU-TRAC legacy,** this SUV tyre provides reduced rolling resistance and increased wet grip, plus a shoulder base that inhibits block wriggling and tyre deformity. Stiff sidewalls absorb impact and optimize ride comfort while a wide footprint enhances overall driving safety and stability.



1



2



3



4

## ENGLISH

1. **CROSS-LINKED SIPES** specially engineered cross-linked sipes on the inner ribs reduce rolling resistance and increase grip in wet conditions.
2. **A WIDE FOOTPRINT** a wide “footprint” — the portion of the tyre’s tread that makes contact with the road surface — provides overall driving safety and stability.
3. **A UNIQUE SIDEWALL CONSTRUCTION** a unique sidewall construction absorbs impact on uneven roads to enhance ride comfort.
4. **A SHOULDER BOTTOM BASE** a shoulder bottom base and blocks retain continuity by reducing block wriggling and tyre deformation.

## ITALIAN

1. **LAMELLE A COLLEGAMENTO INCROCIATO** le lamelle a collegamento incrociato, appositamente progettate sulle nervature interne, riducono la resistenza al rotolamento e aumentano l'aderenza in condizioni di bagnato.
2. **UN'AMPIA IMPRONTA A TERRA** un'ampia “impronta a terra” — la parte del battistrada che entra in contatto con la superficie stradale — garantisce sicurezza e stabilità complessive durante la guida.
3. **UNA STRUTTURA DEL FIANCO ESCLUSIVA** una struttura esclusiva del fianco assorbe gli impatti sulle strade sconnesse per migliorare il comfort di guida.
4. **UNA BASE INFERIORE DELLA SPALLA** la base inferiore della spalla e i blocchi mantengono la continuità strutturale riducendo il movimento dei tasselli e la deformazione dello pneumatico.

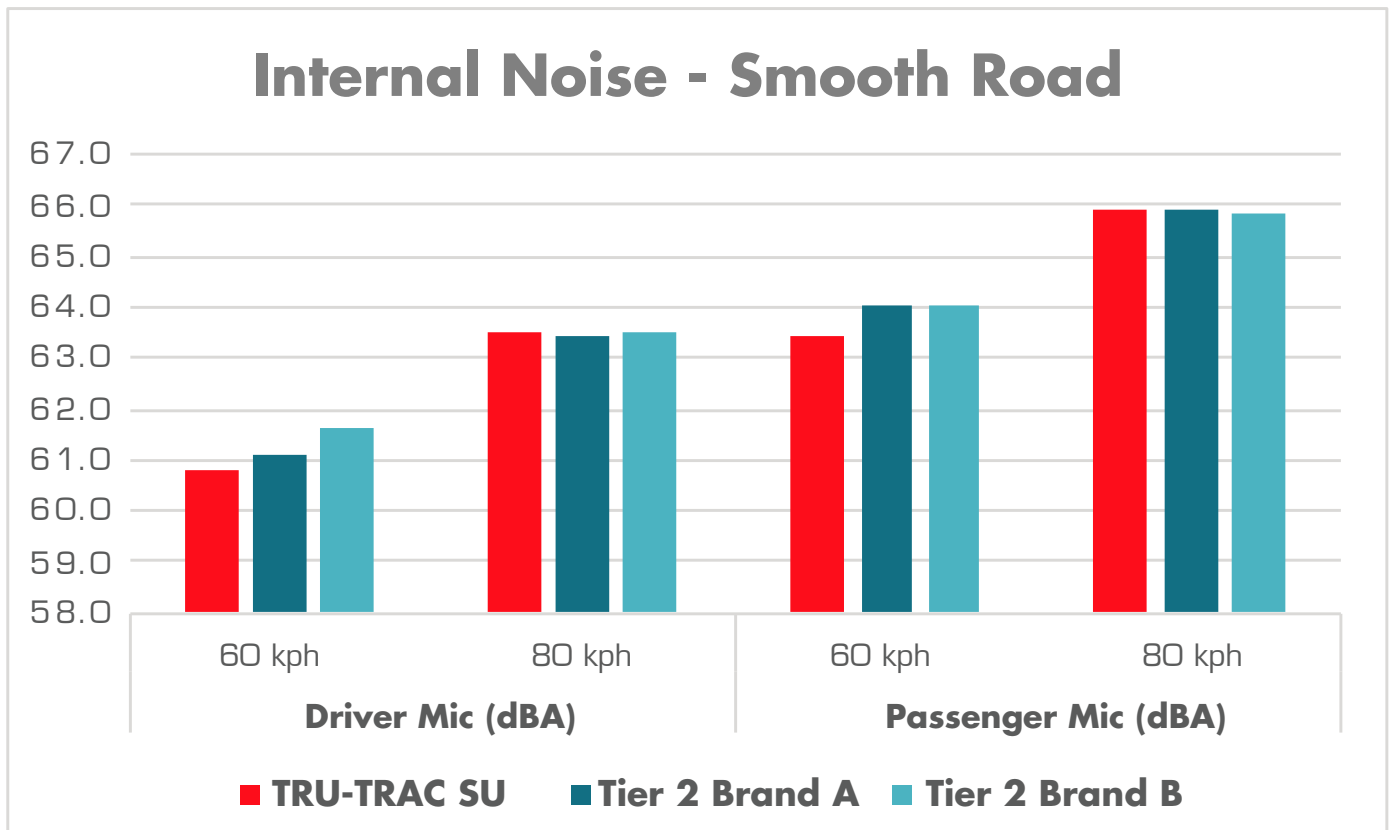
TRU-TRAC SU												
RIM DIA	ASPECT RATIO	TYRE SIZE	LOAD INDEX/SPEED SYMBOL	MAXIMUM LOAD	MAX. INFLATION PRESSURE	RIM WIDTH	SECTION WIDTH	OVERALL DIAMETER	TREAD DEPTH	EU LABELING RATINGS		
				KGS	PSI	INCHES	MM	MM	MM			
16	65	215/65R16	98H	750	44	6.5	220	685	8.3	C	B	71dB/B
17	65	235/65R17	108V XL	1000	50	7.0	239	738	10.0	C	B	72dB/B
	60	235/60R17*	102H	850	44	7.0	241	712	7.9	D	B	71dB/B
18	65	235/65R18	106W	950	44	7.0	239	762	8.1	C	B	71dB/B
		255/65R18	111H	1090	44	7.5	259	788	7.9	C	B	72dB/B
	60	235/60R18	107W XL	975	50	6.0	241	737	8.0	C	B	72dB/B
		245/60R18	105V	925	44	7.5	251	751	7.9	C	B	71dB/B
		255/60R18*	112V XL	1120	50	7.5	257	763	7.8	C	B	73dB/B
	55	265/60R18	114V XL	1180	50	8.0	270	775	8.6	C	B	72dB/B
		215/55R18	99V XL	775	50	7.0	224	695	8.2	C	B	72dB/B
		225/55R18	98V	750	44	7.0	232	706	8.1	C	B	71dB/B
		235/55R18	104W XL	900	50	7.5	240	716	7.7	C	B	72dB/B
		255/55R18	109W XL	1030	50	8.0	263	739	9.2	C	B	72dB/B
19	60	255/60R19	113W XL	1150	50	7.5	260	789	7.8	C	B	73dB/B
		225/55R19	99V	775	44	8.0	242	732	8.0	C	B	71dB/B
	55	235/55R19	105V XL	925	50	8.0	249	742	7.8	C	B	72dB/B
		245/55R19*	103Y	875	44	7.5	249	755	7.5	C	B	71dB/B
	50	255/55R19	111Y XL	1090	50	7.5	261	767	7.3	C	B	72dB/B
		235/50R19*	103V XL	875	50	7.5	241	719	7.7	C	B	72dB/B
45	225/45R19	96W XL	710	50	8.0	230	678	7.5	C	B	72dB/B	
20	60	275/60R20	115H	1215	44	8.0	277	838	8.0	C	B	72dB/B
		235/55R20	105W XL	925	50	7.5	246	765	7.4	C	B	72dB/B
	55	255/55R20	110Y XL	1060	50	8.0	264	795	7.4	C	B	73dB/B
		275/55R20	117V XL	1285	50	8.5	278	811	8.4	C	B	72dB/B
	50	245/50R20	102V	850	44	7.5	249	760	7.8	C	B	71dB/B
		255/50R20	109V XL	1030	50	7.5	259	769	7.6	C	B	72dB/B
		265/50R20	111V XL	1090	50	8.5	276	776	7.8	C	B	72dB/B
		285/50R20	116V XL	1250	50	9.0	293	798	7.5	C	B	72dB/A
	45	245/45R20	103Y XL	875	50	8.5	237	733	6.7	C	B	72dB/B
		255/45R20	105Y XL	925	50	8.5	250	739	7.2	C	B	73dB/B
265/45R20		108Y XL	1000	50	9.0	265	752	7.4	C	B	72dB/B	
275/45R20		110W XL	1060	50	9.0	269	756	7.9	C	B	72dB/B	
40	265/40R20*	104Y XL	900	50	9.5	265	725	7.0	C	B	73dB/B	
	275/40R20	106Y XL	950	50	9.5	275	734	7.4	C	B	72dB/B	
	295/40R20*	110Y XL	1060	50	10.5	293	750	7.2	C	B	73dB/B	
35	315/35R20	110Y XL	1060	50	11.0	309	733	6.5	C	B	73dB/B	
21	50	275/50R21	113V XL	1150	50	8.5	279	815	7.2	C	B	72dB/B
		265/45R21	108W XL	1000	50	9.0	261	777	7.2	C	B	72dB/B
	45	275/45R21	110Y XL	1060	50	9.0	272	784	7.1	C	B	72dB/B
		265/40R21	105Y XL	925	50	9.5	266	751	7.4	C	B	72dB/B
	40	295/40R21	111Y XL	1090	50	10.5	297	775	7.1	C	B	72dB/A
		285/35R21*	105Y XL	925	50	10.0	281	740	6.7	C	B	73dB/B
35	295/35R21*	107Y XL	975	50	10.5	292	746	6.5	C	B	73dB/B	

\* Newly released sizes

TRU-TRAC SU													
RIM DIA	ASPECT RATIO	TYRE SIZE	LOAD INDEX/SPEED SYMBOL	MAXIMUM LOAD	MAX. INFLATION PRESSURE	RIM WIDTH	SECTION WIDTH	OVERALL DIAMETER	TREAD DEPTH	EU LABELING RATINGS			
				KGS	PSI	INCHES	MM	MM	MM				
22	50	275/50R22	111V	1090	44	8.5	280	836	7.1	C	B	72dB/B	
		275/45R22	112W XL	1120	50	9.5	270	807	7.0	C	B	73dB/B	
	45	285/45R22	114Y XL	1180	50	10.0	283	819	7.2	C	B	72dB/A	
		305/45R22*	118W XL	1320	50	10.0	300	838	6.8	C	B	73dB/B	
	40	265/40R22	106Y XL	950	50	9.5	266	777	7.3	C	B	72dB/B	
		275/40R22	108Y XL	1000	50	9.5	273	785	7.1	C	B	72dB/B	
		285/40R22	110Y XL	1060	50	10.0	283	788	7.1	C	B	72dB/B	
		305/40R22	114W XL	1180	50	11.0	314	803	8.0	C	B	73dB/B	
		265/35R22	102Y XL	850	50	9.5	258	747	6.8	C	B	73dB/B	
		285/35R22*	106W XL	950	50	10.0	282	766	6.8	C	B	73dB/B	
	35	315/35R22	111Y XL	1090	50	11.0	309	784	6.6	C	B	73dB/B	
		235/30R22*	90W XL	600	50	8.5	235	706	7.2	D	B	72dB/B	
	30	245/30R22*	92W XL	630	50	8.5	239	714	6.8	D	B	72dB/B	
		295/30R22*	103Y XL	875	50	10.5	291	745	6.7	C	B	73dB/B	
	24	35	295/35R24	110Y XL	1060	50	10.5	289	823	6.7	C	B	73dB/B
			305/35R24	112W XL	1120	50	10.5	305	825	7.8	C	B	73dB/B

\* Newly released sizes

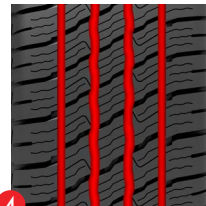
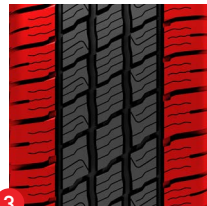
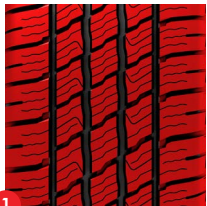
## TRU-TRAC SU / TEST RESULTS



# TRU-TRAC HT III



**TRU-TRAC HT III** is the 3<sup>rd</sup> generation highway terrain tyre featuring a symmetric tread pattern with interlocking center blocks, promoting even wear and extending tread life. Its optimized design enhances durability and performance. Additionally, variable-angle siping on the tread blocks creates multiple independent biting edges, improving grip in both dry and wet conditions.



## ENGLISH

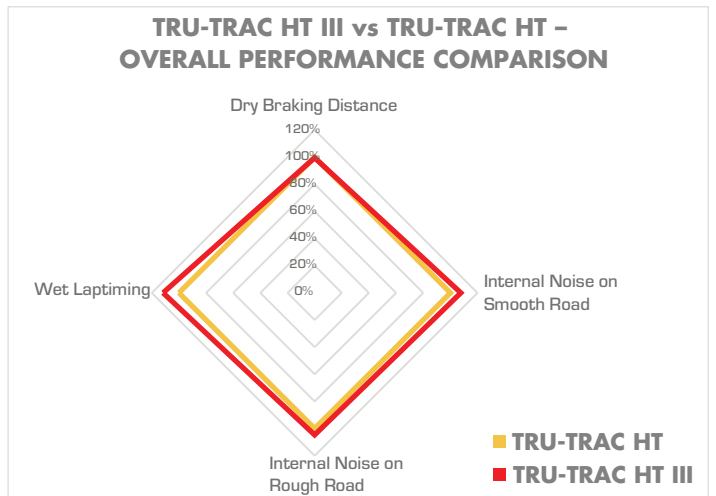
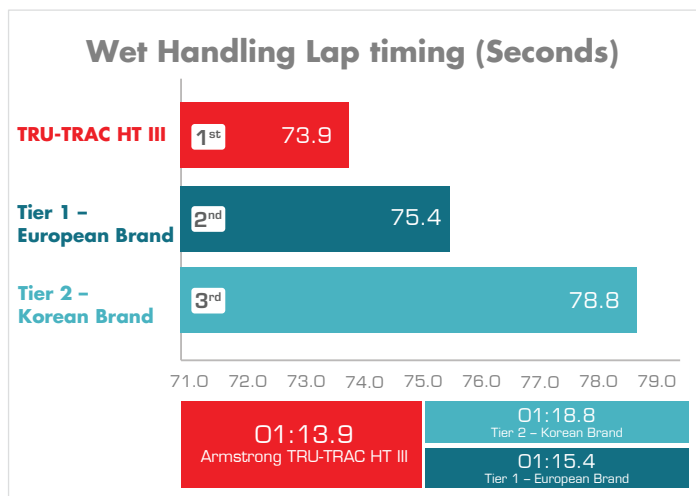
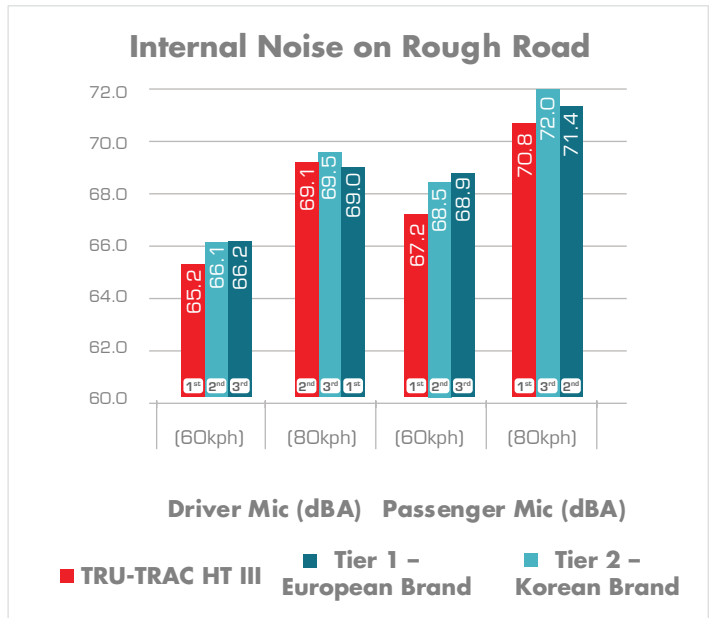
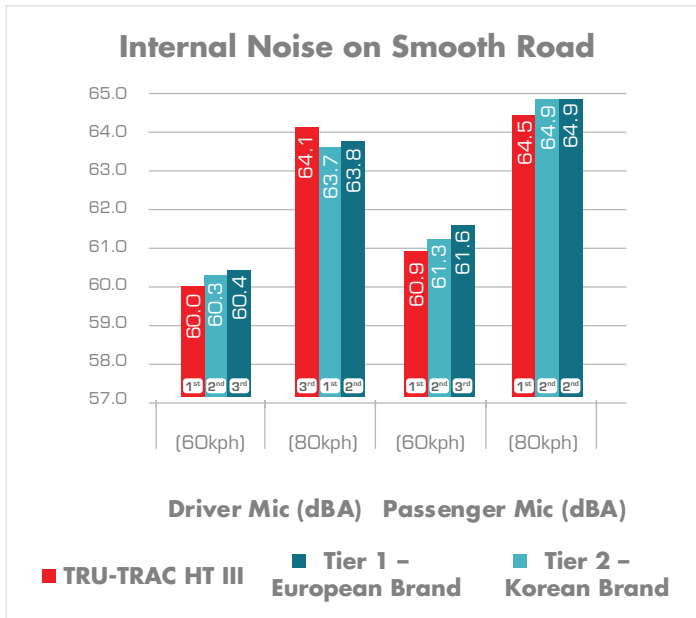
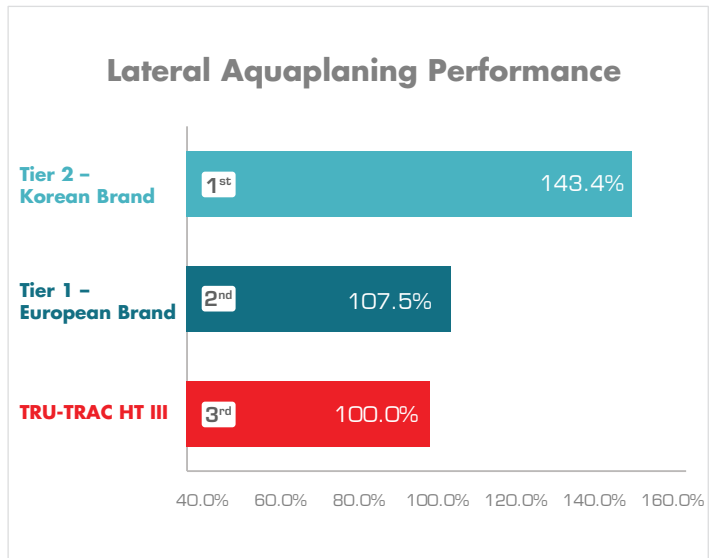
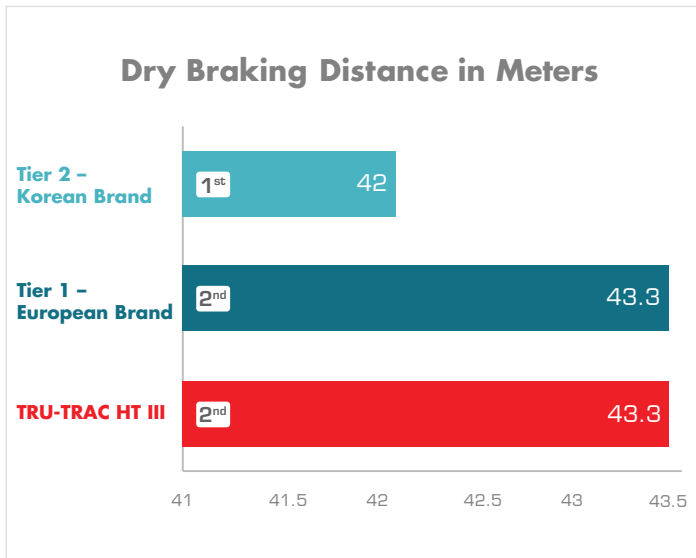
- 1. SYMMETRIC TREAD PATTERN WITH INTERLOCKING CENTER BLOCKS** the uniform, non-directional design promotes even wear throughout the tyre's lifespan, contributing to longer tread life. Additionally, the optimized tread design enhances overall durability and performance.
- 2. VARIABLE-ANGLE SIPING ON TREAD BLOCKS** Multiple sipes are integrated into the tread blocks at varying angles, creating numerous independent biting edges. This improves both dry and wet grip performance without compromising ride comfort or highway stability.
- 3. REINFORCED SHOULDERS** the solid, continuous structure of the shoulder blocks ensures constant contact with the road, providing excellent steering response, directional stability at highway speeds, and reduced road noise for a quieter ride.
- 4. FOUR WIDE CIRCUMFERENTIAL GROOVES** Four deep, continuous longitudinal channels efficiently evacuate water away from the tread contact patch, significantly enhancing hydroplaning resistance and maintaining wet-road traction and stability.

## ITALIAN

- 1. BATTISTRADA SIMMETRICO CON BLOCCHI CENTRALI INTERCONNESSI** Il design uniforme e non direzionale favorisce un'usura omogenea per tutta la durata dello pneumatico, contribuendo a una maggiore vita utile del battistrada. Inoltre, il design ottimizzato del battistrada migliora la durata complessiva e le prestazioni.
- 2. LAMELLE SUI TASSELLI DEL BATTISTRADA A ANGOLAZIONE VARIABILE** numerose lamelle sono integrate nei tasselli del battistrada con diverse angolazioni, creando molteplici spigoli di aderenza indipendenti. Ciò migliora le prestazioni di aderenza sia sull'asciutto che sul bagnato senza compromettere il comfort di guida o la stabilità alle alte velocità.
- 3. SPALLE RINFORZATE** La struttura solida e continua dei blocchi della spalla garantisce un contatto costante con la strada, offrendo un'eccellente risposta dello sterzo, stabilità direzionale alle velocità autostradali e una riduzione del rumore di rotolamento per una guida più silenziosa.
- 4. QUATTRO AMPIE SCANALATURE CIRCUMFERENZIALI** Quattro profondi e continui canali longitudinali evacuano efficacemente l'acqua dall'area di contatto del battistrada, migliorando significativamente la resistenza all'aquaplaning e mantenendo trazione e stabilità su strade bagnate.

TRU-TRAC HT III												
RIM DIA	ASPECT RATIO	TYRE SIZE	LOAD INDEX/SPEED SYMBOL	MAXIMUM LOAD (KGS)	MAX. INFLATION PRESSURE	RIM WIDTH	SECTION WIDTH	OVERALL DIAMETER	TREAD DEPTH	EU LABELING RATINGS		
				KGS	PSI	INCHES	MM	MM	MM			
16	75	265/75R16	116T	1250	44	7.5	267	804	8.5	C	B	72dB/B
		215/70R16	100H	800	44	6.5	221	708	8.5	C	A	71dB/B
	70	235/70R16	106H	950	44	7.0	240	736	8.5	C	A	71dB/B
		245/70R16	111H XL	1090	50	7.0	248	750	8.5	C	B	72dB/B
		265/70R16	112H	1120	44	8.0	272	778	8.5	C	B	72dB/B
17	70	245/70R17	110T	1060	44	7.0	248	776	8.5	C	B	71dB/B
		265/70R17	115H	1215	44	8.0	272	804	8.5	C	B	72dB/B
	65	225/65R17	102H	850	44	6.5	228	724	8.5	C	B	71dB/B
		245/65R17	111H XL	1090	50	7.0	248	750	8.5	C	B	72dB/B

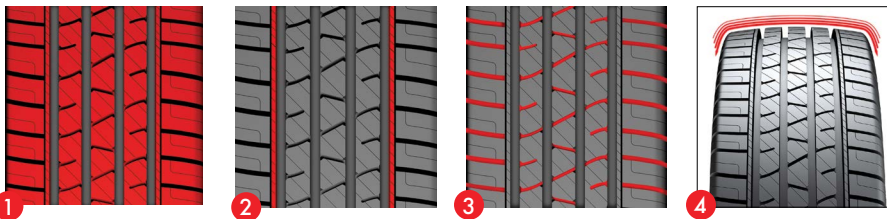
# TRU-TRAC HT III / TEST RESULTS



# TRU-TRAC HT



**True to the Armstrong TRU-TRAC legacy,** this Highway Terrain tyre provides greater towing ability and increased grip under skidding conditions. An optimized curved tread increases tyre rigidity and reduces rolling resistance, while a noise-blocking bar reduces premature wear and road traction noise.



## ENGLISH

1. **A SPECIALLY ENGINEERED TREAD** a specially engineered tread design provides greater towing ability on highways.
2. **A NOISE-BLOCKING BAR** a noise-blocking bar on the tyre shoulders delays premature wear and reduces noise generated by road traction.
3. **CONTINUOUS OPEN LATERAL CHANNELS** continuous open lateral channels increase tyre grip under skidding conditions and provide enhanced safety.
4. **AN OPTIMIZED CURVED TREAD PROFILE** an optimized curved tread profile increases rigidity and reduces rolling resistance.

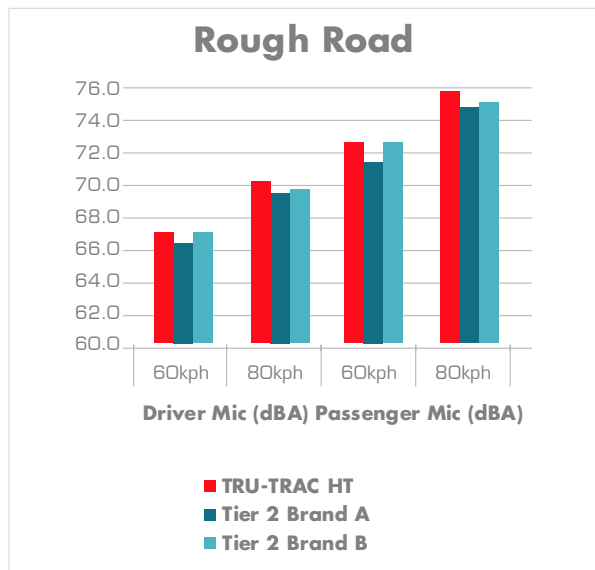
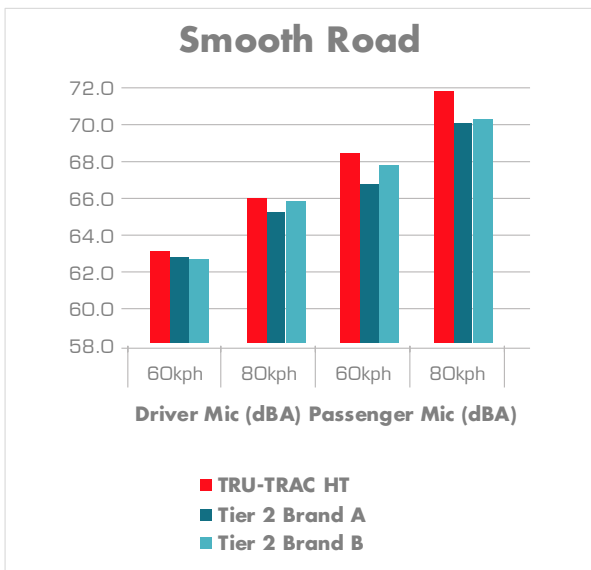
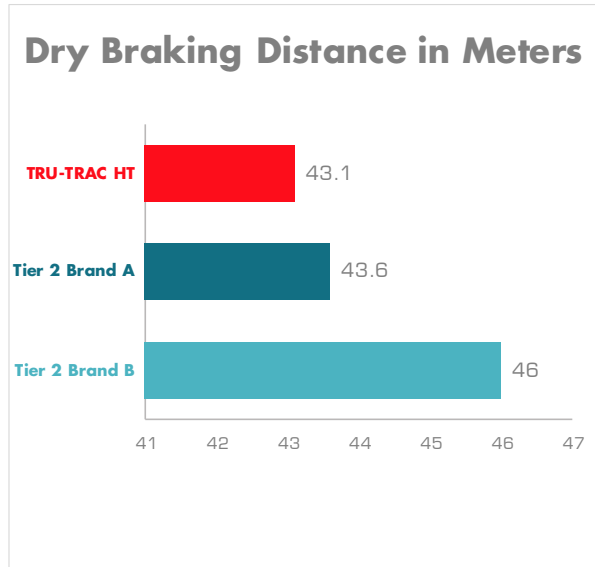
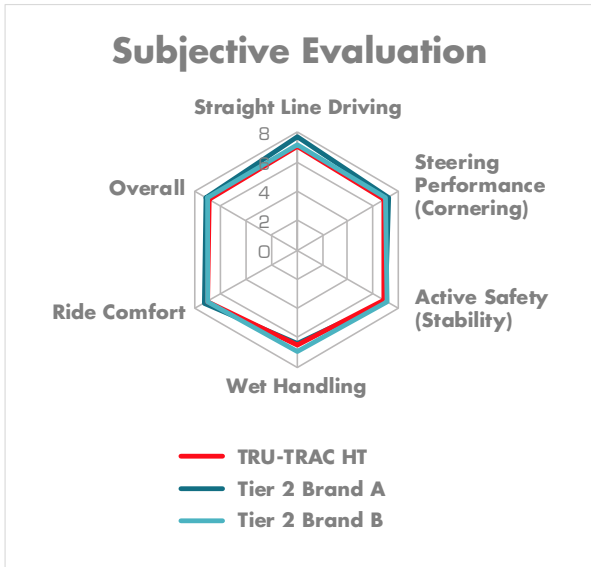
## ITALIAN

1. **UN BATTISTRADA APPOSITAMENTE PROGETTATO** un battistrada appositamente progettato offre una maggiore capacità di traino sulle autostrade.
2. **UNA BARRA DI RIDUZIONE DEL RUMORE** una barra di riduzione del rumore posizionata sulle spalle dello pneumatico ritarda l'usura prematura e riduce il rumore generato dal contatto con la strada.
3. **CANALI LATERALI APERTI E CONTINUI** I canali laterali aperti e continui aumentano l'aderenza dello pneumatico in condizioni di slittamento e garantiscono una maggiore sicurezza.
4. **UN PROFILO DEL BATTISTRADA CURVO E OTTIMIZZATO** un profilo del battistrada curvo e ottimizzato aumenta la rigidità e riduce la resistenza al rotolamento.

TRU-TRAC HT												
RIM DIA	ASPECT RATIO	TYRE SIZE	LOAD INDEX/SPEED SYMBOL	MAXIMUM LOAD (KGS)	MAX. INFLATION PRESSURE	RIM WIDTH	SECTION WIDTH	OVERALL DIAMETER	TREAD DEPTH	EU LABELING RATINGS		
				KGS	PSI	INCHES	MM	MM	MM			
15	75	235/75R15	109H XL	1030	50	6.5	237	729	10.0	D	C	72dB/B
	75	265/75R16*	116T	1250	44	7.5	267	800	9.3	D	C	72dB/B
		215/70R16	100H	800	44	6.5	225	707	9.1	D	C	71dB/B
		225/70R16	103H	875	44	6.5	229	720	9.1	D	C	71dB/B
16	70	235/70R16	106H	950	44	7.0	245	737	9.0	D	C	71dB/B
		245/70R16	111H XL	1090	50	7.0	250	747	9.0	D	C	72dB/B
		255/70R16*	111T	1090	44	7.5	259	760	9.4	D	C	72dB/B
		265/70R16	112H	1120	44	8.0	272	773	9.0	D	C	72dB/B
	65	235/65R16*	103H	875	44	7.0	238	708	9.5	D	C	71dB/B
	70	245/70R17*	110T	1060	44	7.0	244	772	9.3	D	C	72dB/B
		265/70R17	115H	1215	44	8.0	275	804	9.0	D	C	72dB/B
225/65R17		102H	850	44	7.0	230	721	9.0	D	C	71dB/B	
17	65	235/65R17	108V XL	1000	50	7.0	240	737	8.6	D	C	72dB/B
		245/65R17	107H	975	44	7.0	244	746	8.5	D	C	71dB/B
		265/65R17	112H	1120	44	8.0	272	774	9.3	D	C	72dB/B
		255/70R18	113H	1150	44	8.0	256	813	9.6	D	C	72dB/B
	70	265/70R18	116H	1250	44	7.5	274	830	9.5	D	C	72dB/B
18	65	265/65R18	114H	1180	44	7.5	271	800	9.5	D	C	72dB/B
	60	225/60R18*	104H XL	900	50	6.5	223	726	9.6	D	C	72dB/B
		265/60R18	110H	1060	44	8.0	269	774	10.2	D	C	72dB/B
		285/60R18	116H	1250	44	8.0	293	800	10.3	D	C	72dB/B
20	60	275/60R20	115H	1215	44	8.0	277	838	10.4	D	C	72dB/B
	55	275/55R20	117H XL	1285	50	8.5	278	811	10.4	D	C	73dB/B

\* Newly released sizes

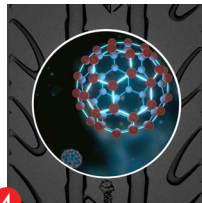
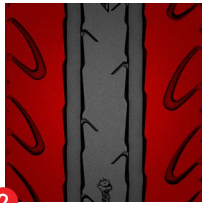
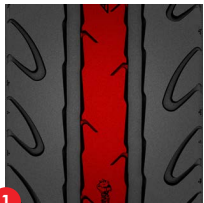
# TRU-TRAC HT / TEST RESULTS



# BLU-TRAC RACE



**BLU-TRAC RACE** guarantees your direct route to victory. This Extreme Performance summer tyre, designed for racing and offering reliable performance, with its exceptional grip and optimum handling. It not only makes a bold statement on the road but also stands out on the racetrack.



## ENGLISH

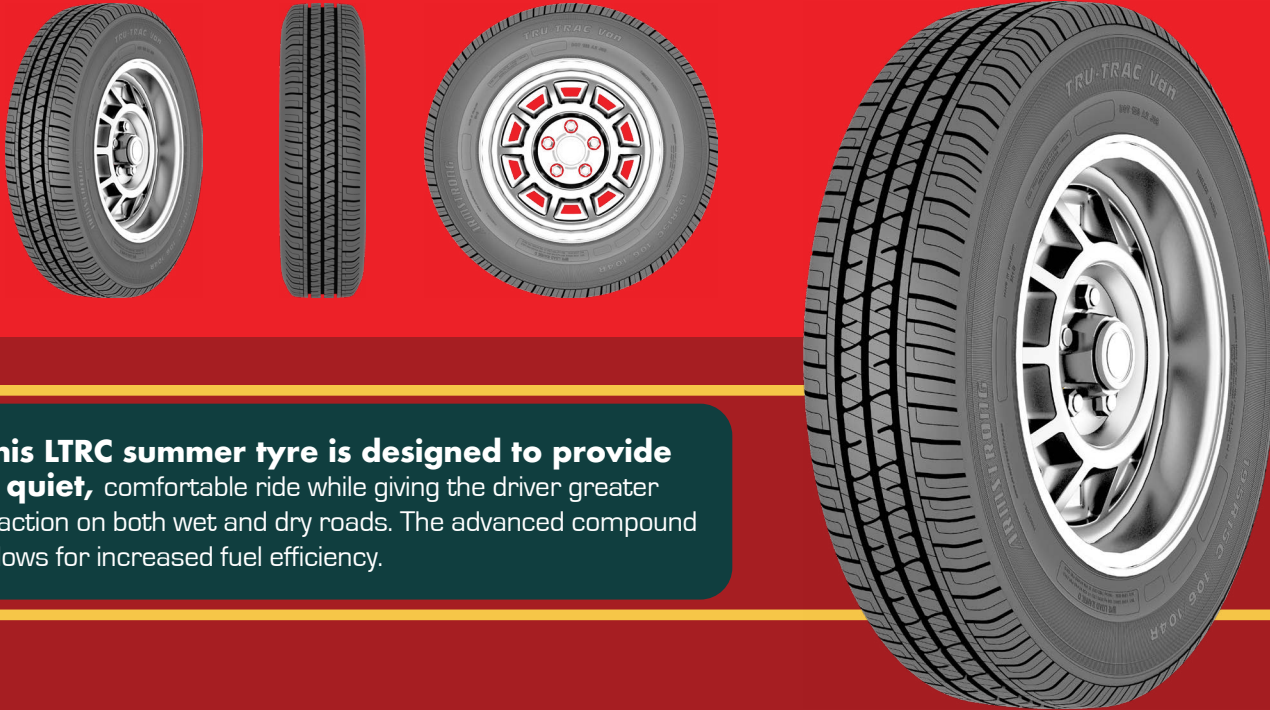
1. **WIDE CENTRE RIB** increases handling and optimized steerability in extreme driving performance conditions.
2. **UNIQUE SHOULDER DESIGN** provides tight contact with the road during excessive cornering.
3. **WIDE ZIG-ZAG GROOVES** with chamfered edges that offer excellent drainage to enhance wet grip.
4. **OPTIMIZED TREAD COMPOUND** provides enhanced dry traction and withstands operational heat generation.

## ITALIAN

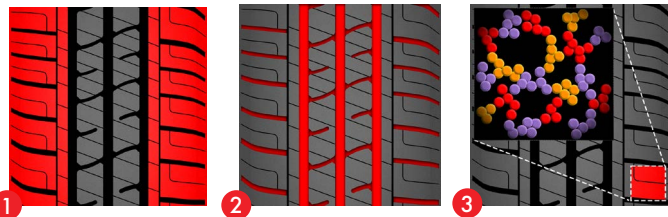
1. **AMPIA NERVATURA CENTRALE** migliora la maneggevolezza e ottimizza la precisione di sterzata in condizioni di guida ad alte prestazioni.
2. **DESIGN ESCLUSIVO DELLA SPALLA** garantisce un contatto ottimale con la strada durante le curve più impegnative.
3. **AMPIE SCANALATURE A ZIG-ZAG** con bordi smussati che assicurano un eccellente drenaggio dell'acqua per migliorare l'aderenza sul bagnato.
4. **MESCOLA DEL BATTISTRADA OTTIMIZZATA** offre una maggiore trazione sull'asciutto e resiste efficacemente al calore generato durante l'utilizzo.

BLU-TRAC RACE													
RIM DIA	ASPECT RATIO	TYRE SIZE	LOAD INDEX/SPEED SYMBOL	MAXIMUM LOAD (KGS)		MAX. INFLATION PRESSURE	RIM WIDTH	SECTION WIDTH	OVERALL DIAMETER	TREAD DEPTH	EU LABELING RATINGS		
				KGS	PSI						INCHES	MM	MM
15	50	205/50R15	89W XL	580	50	6.5	212	585	5.5	D	B	72dB/B	
		225/50R15	95V XL	690	50	6.5	231	605	5.0	D	B	72dB/B	
16	50	225/50R16	96W XL	710	50	6.5	230	629	5.0	D	B	72dB/B	
17	45	225/45R17	94W XL	670	50	7.0	221	633	5.1	D	B	72dB/B	
	40	245/40R17	95W XL	690	50	8.0	239	627	4.9	D	B	72dB/B	
		255/40R17	98W XL	750	50	8.5	256	632	5.0	D	B	72dB/B	
18	40	225/40R18	92Y XL	630	50	7.5	224	637	5.2	D	B	72dB/B	
		235/40R18	95Y XL	690	50	8.0	237	643	5.1	D	B	72dB/B	
		245/40R18	97Y XL	730	50	8.0	246	649	4.8	D	B	72dB/B	
	35	255/35R18	94Y XL	670	50	8.5	255	632	4.8	D	B	72dB/B	
		265/35R18	97Y XL	730	50	10.0	267	638	4.9	D	B	72dB/B	
		275/35R18	99W XL	775	50	10.0	274	642	5.3	D	B	72dB/B	

# TRU-TRAC VAN



This LTRC summer tyre is designed to provide a quiet, comfortable ride while giving the driver greater traction on both wet and dry roads. The advanced compound allows for increased fuel efficiency.



## ENGLISH

- LARGE SHOULDER BLOCK WITH A NOISE-BLOCKING BAR** reducing noise at the shoulder area delays premature wear and reduces sound that is generated by road traction.
- INFLECTIONAL VERTICAL GROOVES AND SLANTING HORIZONTAL CHANNELS** increases tyre grip and shortens braking distance, providing enhanced safety.
- SPECIAL COMPOUND** designed to resist chipping and tearing, providing excellent durability and delivering longer mileage.

## ITALIAN

- AMPIO TASSELLO DELLA SPALLA CON BARRA FONOASSORBENTE** la riduzione del rumore nell'area della spalla ritarda l'usura prematura e diminuisce il rumore generato dal contatto con la strada.
- SCANALATURE VERTICALI SAGOMATE E CANALI ORIZZONTALI INCLINATI** aumentano l'aderenza dello pneumatico e riducono gli spazi di frenata, migliorando la sicurezza.
- MESCOLA SPECIALE** progettata per resistere a scheggiature e strappi, garantisce un'eccellente durata e una maggiore percorrenza chilometrica.

**TRU-TRAC VAN**

RIM DIA	ASPECT RATIO	TYRE SIZE	PR	LOAD INDEX/SPEED SYMBOL	MAXIMUM LOAD (KGS)		MAX. INFLATION PRESSURE	RIM WIDTH	SECTION WIDTH	OVERALL DIAMETER	TREAD DEPTH	EU LABELING RATINGS		
					SINGLE	DUAL	PSI	INCHES	MM	MM	MM			
14	LTRC	185R14C	8	102/100R	850	800	65	6.5	188	645	8.0	D	C	71dB/B
		195R14C	8	106/104S	950	900	65	5.5	196	669	8.4	D	C	72dB/B
	75	205/75R14C	8	109/107S	1030	975	68	5.0	201	666	8.2	D	C	72dB/B
15	LTRC	195R15C	8	106/104R	950	900	65	5.5	199	687	8.5	D	C	71dB/B
	70	215/70R15C	8	109/107T	1030	975	65	6.5	222	686	8.4	D	C	72dB/B
		225/70R15C	8	112/110T	1120	1060	65	6.5	229	700	8.3	D	C	72dB/B
16	LTRC	205R16C	8	110/108Q	1060	1000	65	6.0	215	738	8.1	D	C	72dB/B

# UPCOMING VAN

**TRU-TRAC VAN3**

RIM DIA	ASPECT RATIO	TYRE SIZE	LOAD INDEX/SPEED SYMBOL
14	70	175/70R14C	95/93T
	65	175/65R14C	90/88T
		195/70R15C	104/102T
15	70	215/70R15C	109/107T
		225/70R15C	112/110T
	65	205/65R15C	102/100T
215/65R15C		104/102T	
75		185/75R16C	104/102T
	195/75R16C	107/105T	
	195/75R16C	110/108R	
	205/75R16C	110/108T	
	205/75R16C	113/111T	
	215/75R16C	113/111T	
16	75	225/75R16C	121/119R
		195/65R16C	104/102T
		205/65R16C	107/105T
	65	215/65R16C	109/107T
		225/65R16C	112/110T
		235/65R16C	115/113T
60	235/65R16C	121/119R	
	195/60R16C	99/97H	
17	60	215/60R16C	108/106T
		215/60R17C	109/107T
	55	225/55R17C	109/107H



**COMING SOON**



**ARMSTRONG  
ALL SEASON TYRES**

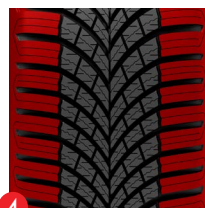
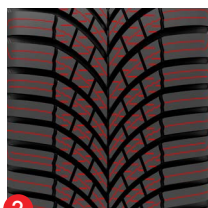
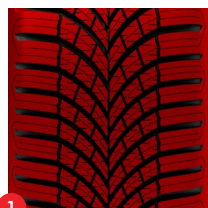


NEW

# BLU-TRAC Flex



**BLU-TRAC FLEX** is engineered as a dependable all-season tyre for European motorists who need one tyre to perform across changing weather conditions. Its directional V-shaped tread, dense siping network and angled evacuation grooves work together to deliver confident wet grip, light winter traction, stable handling and comfortable everyday driving performance.



## ENGLISH

- 1. ALL-SEASON CONTROL** directional V-shaped tread design enhances water and slush evacuation for confident year-round performance.
- 2. HIGH-DENSITY SIPING** multiple biting edges support traction on wet, cold and light snowy roads.
- 3. CONFIDENT WET PERFORMANCE** wide angled grooves quickly move water away from the contact patch to reduce aquaplaning risk.
- 4. REINFORCED SHOULDER DESIGN** strong shoulder blocks support cornering stability and responsive handling.

## ITALIAN

- 1. CONTROLLO PER TUTTE LE STAGIONI** il design direzionale del battistrada a forma di V migliora l'evacuazione di acqua e fanghiglia per garantire prestazioni affidabili tutto l'anno.
- 2. LAMELLE AD ALTA DENSITÀ** molteplici spigoli di aderenza favoriscono la trazione su strade bagnate, fredde e leggermente innevate.
- 3. PRESTAZIONI SICURE SUL BAGNATO** Le ampie scanalature angolate allontanano rapidamente l'acqua dall'area di contatto per ridurre il rischio di aquaplaning.
- 4. DESIGN DELLA SPALLA RINFORZATO** I robusti tasselli della spalla favoriscono la stabilità in curva e una guida reattiva.

BLU-TRAC Flex												
RIM DIA	ASPECT RATIO	TYRE SIZE	LOAD INDEX/SPEED SYMBOL	MAXIMUM LOAD	MAX. INFLATION PRESSURE	RIM WIDTH	SECTION WIDTH	OVERALL DIAMETER	TREAD DEPTH	EU LABELING RATINGS		
				KGS	PSI	INCHES	MM	MM	MM			
13	80	155/80R13	79T	437	42	4.5	157	578	8.5	D	C	69dB/B
		145/70R13	71T	345	44	4.5	150	534	8.5	D	C	69dB/B
	70	155/70R13	75T	387	44	4.5	157	548	8.5	D	C	69dB/B
		165/70R13	79T	437	44	5.0	170	562	8.5	D	C	69dB/B
		175/70R13	82T	475	44	5.0	177	576	8.5	D	B	69dB/B
65	155/65R13	73T	365	44	4.5	157	532	8.5	D	C	69dB/B	
14	70	165/70R14	81T	462	44	5.0	170	588	8.5	D	C	69dB/B
		175/70R14	88T XL	560	50	5.0	177	602	8.5	C	B	69dB/B
		185/70R14	88H	560	44	5.5	189	616	8.5	C	B	69dB/B
	65	155/65R14	75T	387	44	4.5	157	558	8.5	D	C	69dB/B
		165/65R14	79T	437	44	5.0	170	570	8.5	D	C	69dB/B
		175/65R14	82T	475	44	5.0	177	584	8.5	D	B	69dB/B
60	165/60R14	75H	387	44	5.0	170	554	8.5	D	C	69dB/B	
	185/60R14	82H	475	44	5.5	189	578	8.5	D	B	69dB/B	
15	65	175/65R15	84H	500	44	5.0	177	609	8.5	C	B	69dB/B
		185/65R15	88H	560	44	5.5	189	621	8.5	C	B	69dB/B
		195/65R15	91V	615	44	6.0	201	635	8.5	C	B	70dB/B
	60	205/65R15	99V XL	775	50	6.0	209	647	8.5	C	B	70dB/B
		165/60R15	77H	412	44	5.0	170	579	8.5	D	C	69dB/B
		185/60R15	88H XL	560	50	5.5	189	603	8.5	C	B	69dB/B
55	195/60R15	88H	560	44	6.0	201	615	8.5	C	B	70dB/B	
	185/55R15	82H	475	44	6.0	194	585	8.5	D	B	69dB/B	
	195/55R15	89V XL	580	50	6.0	201	595	8.5	C	B	70dB/B	
50	195/50R15	86V XL	530	50	6.0	201	577	8.5	C	B	70dB/B	
16	70	215/70R16	104H XL	900	50	6.5	221	708	8.5	C	B	70dB/B
	65	215/65R16	102V XL	850	50	6.5	221	686	8.5	C	B	70dB/B
		195/60R16	93V XL	650	50	6.0	201	640	8.5	C	B	70dB/B
	60	205/60R16	96V XL	710	50	6.0	209	652	8.5	C	B	70dB/B
		215/60R16	99V XL	775	50	6.5	221	664	8.5	C	B	70dB/B
		225/60R16	102W XL	850	50	6.5	228	676	8.5	C	B	70dB/B
	235/60R16	100H	800	44	7	240	688	8.5	C	B	70dB/B	
55	195/55R16	91V XL	615	50	6.0	201	620	8.5	C	B	70dB/B	
	205/55R16	94V XL	670	50	6.5	214	632	8.5	C	B	70dB/B	
	215/55R16	97V XL	730	50	7.0	226	642	8.5	C	B	70dB/B	
	225/55R16	99W XL	775	50	7.0	233	654	8.5	C	B	70dB/B	
50	195/50R16	88V XL	560	50	6.0	201	602	8.5	C	B	70dB/B	
45	195/45R16	84V XL	500	50	6.5	195	582	8.5	C	B	70dB/B	
	205/45R16	87W XL	545	50	7.0	206	590	8.5	C	B	70dB/B	
	215/45R16	90V XL	600	50	7.0	213	600	8.5	C	B	70dB/B	
17	65	225/65R17	106V XL	950	50	6.5	228	724	8.5	B	B	70dB/B
		235/65R17	108W XL	1000	50	7	240	738	8.5	B	B	70dB/B
	60	215/60R17	100V XL	800	50	6.5	221	690	8.5	C	B	70dB/B
		225/60R17	103V XL	875	50	6.5	228	702	8.5	C	B	70dB/B

BLU-TRAC Flex												
RIM DIA	ASPECT RATIO	TYRE SIZE	LOAD INDEX/SPEED SYMBOL	MAXIMUM LOAD	MAX. INFLATION PRESSURE	RIM WIDTH	SECTION WIDTH	OVERALL DIAMETER	TREAD DEPTH	EU LABELING RATINGS		
				KGS	PSI	INCHES	MM	MM	MM			
17	55	205/55R17	95V XL	690	50	6.5	214	658	8.5	C	B	70dB/B
		215/55R17	98W XL	750	50	7.0	226	668	8.5	C	B	70dB/B
		225/55R17	101W XL	825	50	7.0	233	680	8.5	C	B	70dB/B
		235/55R17	103V XL	875	50	7.5	245	690	8.5	C	B	70dB/B
	50	205/50R17	93W XL	650	50	6.5	214	638	8.5	C	B	70dB/B
		215/50R17	95W XL	690	50	7.0	226	648	8.5	C	B	70dB/B
		225/50R17	98V XL	750	50	7.0	233	658	8.5	C	B	70dB/B
		205/45R17	88W XL	560	50	7.0	206	616	8.5	C	B	70dB/B
	45	215/45R17	91W XL	615	50	7.0	213	626	8.5	C	B	70dB/B
		225/45R17	94W XL	670	50	7.5	225	634	8.5	C	B	70dB/B
		235/45R17	97W XL	730	50	8	236	644	8.5	C	B	70dB/B
		40	215/40R17	87W XL	545	50	7.5	218	604	8.5	C	B
18	60	235/60R18	107V XL	975	50	7	240	739	8.5	B	B	70dB/B
		215/55R18	99W XL	775	50	7.0	226	693	8.5	C	B	70dB/B
		225/55R18	102V XL	850	50	7	233	705	8.5	B	B	70dB/B
		235/55R18	104W XL	900	50	7.5	245	715	8.5	C	B	70dB/B
	50	225/50R18	99W XL	775	50	7.0	233	683	8.5	C	B	70dB/B
		235/50R18	101V XL	825	50	7.5	245	693	8.5	C	B	70dB/B
		225/45R18	95W XL	690	50	7.5	225	659	8.5	C	B	70dB/B
		235/45R18	98W XL	750	50	8	236	669	8.5	C	B	70dB/B
	45	245/45R18	100W XL	800	50	8	243	677	8.5	C	B	70dB/B
		225/40R18	92Y XL	630	50	8.0	230	637	8.5	C	B	70dB/B
		235/40R18	95W XL	690	50	8.5	241	645	8.5	C	B	70dB/B
		245/40R18	97W XL	730	50	8.5	248	653	8.5	C	B	70dB/B
19	55	225/55R19	103V XL	875	50	7	233	731	8.5	B	B	70dB/B
		235/55R19	105W XL	925	50	7.5	245	741	8.5	B	B	70dB/B
		225/45R19	96W XL	710	50	7.5	225	685	8.5	C	B	70dB/B
	45	235/45R19	99W XL	775	50	8	236	695	8.5	C	B	70dB/B
		245/45R19	102W XL	850	50	8	243	703	8.5	C	B	70dB/B
		40	245/40R19	98W XL	750	50	8.5	248	679	8.5	C	B
20	45	255/45R20	105W XL	925	50	8.5	255	738	8.5	C	B	70dB/A

# BLU-TRAC Van Flex



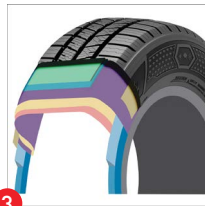
**BLU-TRAC Van Flex is engineered** for commercial van users who need dependable all-season performance with the durability and stability required for daily business use. Its robust multi-rib tread, wide water evacuation grooves and high-density siping work together to deliver confident wet grip, reliable braking, stable handling and improved wear performance throughout the year.



1



2



3



4

## ENGLISH

- 1. ALL-SEASON SIPING** high-density sipes create extra biting edges for improved year-round traction.
- 2. WET GRIP CONFIDENCE** wide circumferential grooves help evacuate water efficiently for dependable wet-road performance.
- 3. COMMERCIAL VAN DURABILITY** strong tread architecture supports the load and handling demands of van applications.
- 4. EVEN WEAR PERFORMANCE** balanced footprint design helps promote uniform contact pressure and longer tread life.

## ITALIAN

- 1. LAMELLATURA PER TUTTE LE STAGIONI** le lamelle ad alta densità creano ulteriori spigoli di aderenza per migliorare la trazione durante tutto l'anno.
- 2. SICUREZZA DI ADERENZA SUL BAGNATO** le ampie scanalature circolari aiutano a evacuare l'acqua in modo efficiente per garantire prestazioni affidabili su strade bagnate.
- 3. DURATA PER VEICOLI COMMERCIALI** la robusta struttura del battistrada supporta le esigenze di carico e maneggevolezza tipiche dei veicoli commerciali.
- 4. PRESTAZIONI DI USURA UNIFORME** il design equilibrato dell'impronta a terra favorisce una pressione uniforme di contatto e una maggiore durata del battistrada.

BLU-TRAC Van FLEX														
RIM DIA	ASPECT RATIO	TYRE SIZE	PR	LOAD INDEX/ SPEED SYMBOL	MAXIMUM LOAD (KGS)		MAX. INFLATION PRESSURE	RIM WIDTH	SECTION WIDTH	OVERALL DIAMETER	TREAD DEPTH	EU LABELING RATINGS		
					SINGLE	DUAL						PSI	INCHES	MM
15	70	195/70R15C	8	104/102R	900	850	65	6.0	201	655	10.5	D	B	71dB/B
		205/70R15C	8	106/104R	950	900	65	6.0	209	669	10.5	D	B	71dB/B
		215/70R15C	8	109/107S	1030	975	65	6.5	221	683	10.5	C	A	71dB/B
		225/70R15C	8	112/110R	1120	1060	65	6.5	228	697	10.5	C	A	71dB/B
	65	215/65R15C	6	104/102T	900	850	55	6.5	221	661	10.5	D	A	71dB/B
	16	75	185/75R16C	8	104/102R	900	850	69	5.0	184	684	10.5	D	B
195/75R16C			8	107/105R	975	925	69	5.5	196	698	10.5	D	B	71dB/B
205/75R16C			8	110/108R	1060	1000	69	5.5	203	714	10.5	C	B	71dB/B
215/75R16C			8	113/111R	1150	1090	69	6.0	216	728	10.5	C	A	71dB/B
225/75R16C			10	121/120R	1450	1400	83	6.0	223	744	10.5	C	A	71dB/B
65		195/65R16C	8	104/102T	900	850	69	6.0	201	660	10.5	D	B	71dB/B
		205/65R16C	8	107/105T	975	925	69	6.0	209	672	10.5	D	B	71dB/B
		215/65R16C	8	109/107T	1030	975	69	6.5	221	686	10.5	C	A	71dB/B
		225/65R16C	8	112/110R	1120	1060	69	6.5	228	698	10.5	C	A	71dB/B
		235/65R16C	10	121/119R	1450	1360	83	7.0	240	712	10.5	C	A	71dB/B
60	195/60R16C	6	99/97H	775	730	55	6.0	201	640	10.5	D	B	71dB/B	
	215/60R16C	6	103/101T	875	825	55	6.5	221	664	10.5	D	A	71dB/B	
17	60	215/60R17C	8	109/107T	1030	975	69	6.5	221	690	10.5	C	A	71dB/B



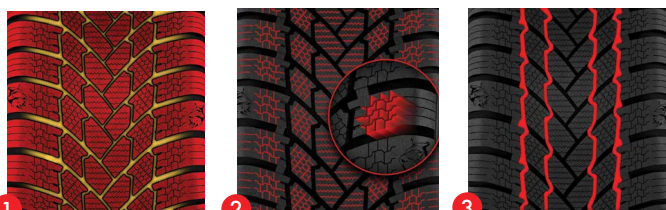
A winter landscape featuring a winding road through a snowy valley. In the background, there are large, rugged mountains covered in snow and ice. The foreground shows a road with tire tracks, a metal guardrail, and several trees, some evergreen and some bare. The sky is a pale, clear blue.

# **ARMSTRONG WINTER TYRES**

# SKI-TRAC PC



**This studless winter passenger tyre** features both grid-shaped and circumferential grooves to deliver enhanced traction, handling, and water/snow evacuation. Its directional tread, sipe design, and grooves work together to increase safety, grip, and comfort.



 **ENGLISH**

1. **A UNI-DIRECTIONAL TREAD** a uni-directional tread with a grid-shaped groove design provides excellent tyre grip in winter conditions and rapid evacuation of snow and ice.
2. **OPTIMIZED 3D SIPES** these optimized 3D sipes offer controlled handling and work ideally in diverse winter weather conditions.
3. **FOUR CIRCUMFERENTIAL GROOVES** these four circumferential grooves provide enhanced traction, increasing handling on wet, snowy roads.

 **ITALIAN**

1. **BATTISTRADA UNIDIREZIONALE** un battistrada unidirezionale con scanalature a griglia garantisce un'eccellente aderenza in condizioni invernali e una rapida evacuazione di neve e ghiaccio.
2. **LAMELLE 3D OTTIMIZZATE** queste lamelle 3D ottimizzate assicurano una guida controllata e prestazioni ideali in diverse condizioni climatiche invernali.
3. **QUATTRO SCANALATURE CIRCONFERENZIALI** queste quattro scanalature circolari migliorano la trazione e la maneggevolezza su strade bagnate e innevate.

**SKI-TRAC PC / STUDLESS**

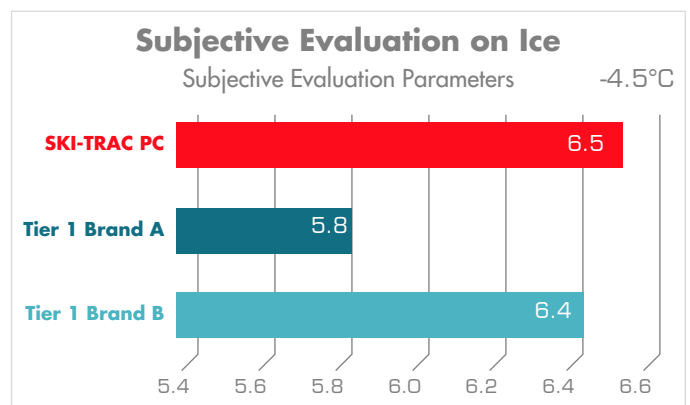
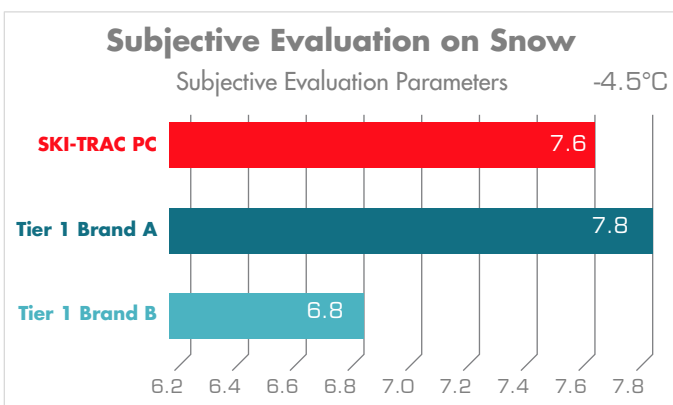
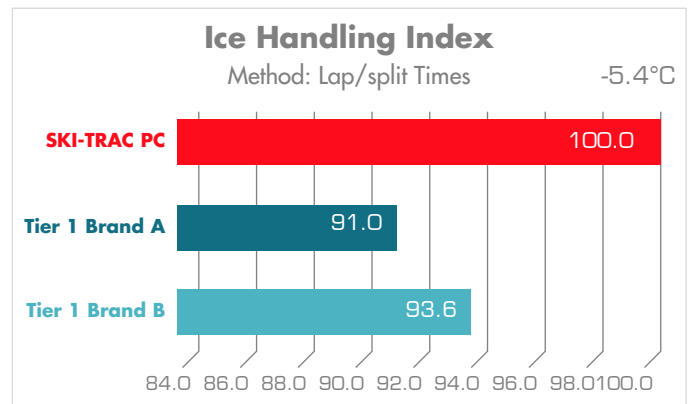
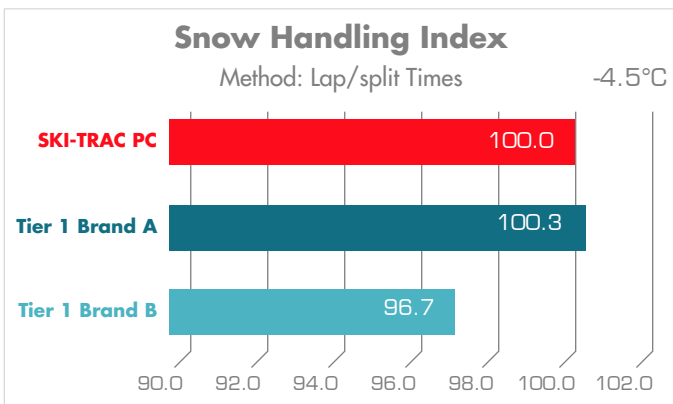
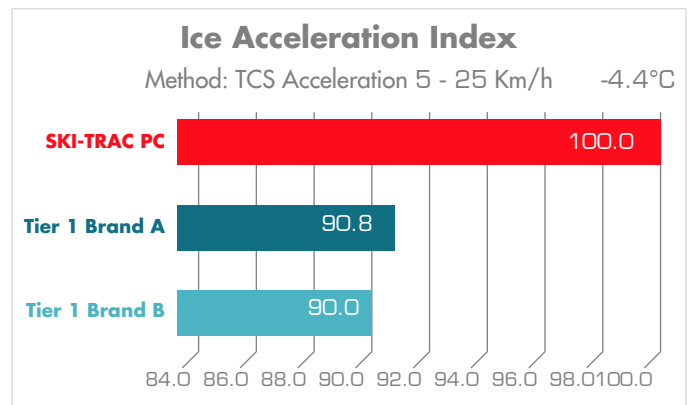
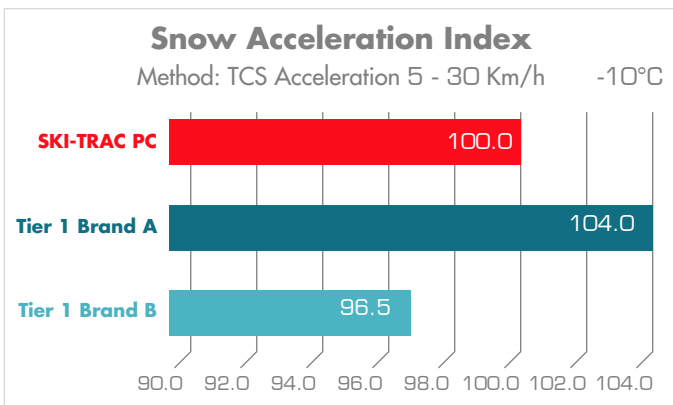
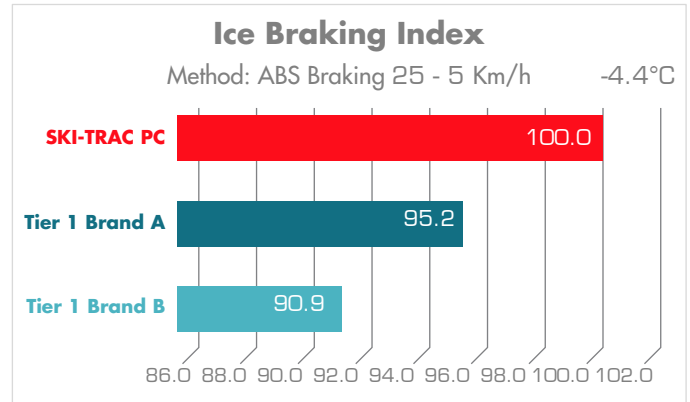
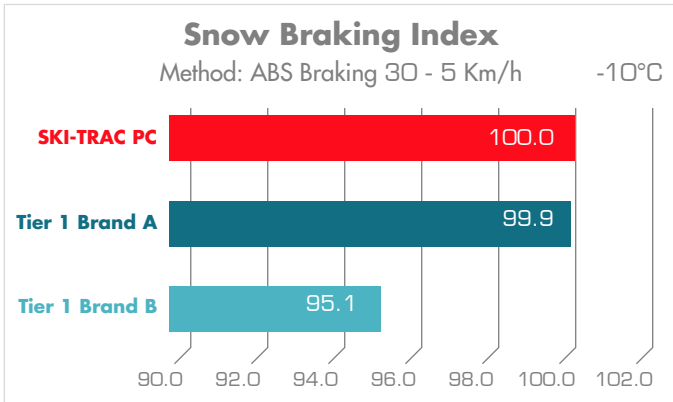
RIM DIA	ASPECT RATIO	TYRE SIZE	LOAD INDEX/SPEED SYMBOL	MAXIMUM LOAD (KGS)	MAX. INFLATION PRESSURE	RIM WIDTH	SECTION WIDTH	OVERALL DIAMETER	TREAD DEPTH	EU LABELING RATINGS			
				KGS	PSI	INCHES	MM	MM	MM				
13	80	155/80R13	79T	437	44	4.5	157	578	7.8	C	D	67dB/A	
	70	155/70R13	75T	387	44	4.5	157	548	7.8	C	D	69dB/B	
	65	155/65R13	73T	365	44	4.5	157	532	7.8	C	D	69dB/B	
14	70	165/70R14	81T	462	44	5.0	170	588	7.8	C	D	69dB/B	
		175/70R14	84T	500	44	5.0	177	602	8.0	C	D	69dB/B	
	65	155/65R14	75T	387	44	4.5	157	558	7.8	C	D	69dB/B	
		165/65R14	79T	437	44	5.0	170	570	7.8	C	D	69dB/B	
15	60	175/65R14	82T	475	44	5.0	177	584	8.0	C	D	69dB/B	
		185/60R14	82T	475	44	5.5	189	578	8.0	C	C	69dB/B	
	55	185/55R14	80H	450	44	6.0	194	560	8.0	C	C	69dB/B	
		185/65R15	88T	560	44	5.5	189	621	8.0	C	C	69dB/B	
	60	195/65R15	91T	615	44	6.0	201	635	8.2	C	C	69dB/A	
		185/60R15	88H XL	560	50	5.5	189	603	8.0	C	C	69dB/B	
		195/60R15	88T	560	44	6.0	201	615	8.2	C	C	69dB/A	
		185/55R15	86H XL	530	50	6.0	194	585	8.0	C	C	69dB/B	
	16	55	195/55R15	89H XL	580	50	6.0	201	595	8.2	C	C	69dB/A
			195/50R15	86H XL	530	50	6.0	201	577	8.2	C	C	69dB/A
60		215/65R16	98H	750	44	6.5	221	686	8.2	C	C	69dB/A	
		205/60R16	92H	630	44	6.0	209	652	8.2	C	C	69dB/A	
		215/60R16	99H XL	775	50	6.5	221	664	8.2	C	C	69dB/A	
		195/55R16	87H	545	44	6.0	201	620	8.2	C	C	69dB/A	
205/55R16	91H	615	44	6.5	214	632	8.2	C	C	69dB/A			

**UPCOMING SIZES**

RIM DIA	ASPECT RATIO	TYRE SIZE	LOAD INDEX/SPEED SYMBOL
15	65	175/65R15	84T
		205/65R15	94H
		205/65R15	99H XL
16	60	195/60R16	89H

# SKI-TRAC PC / TEST RESULTS

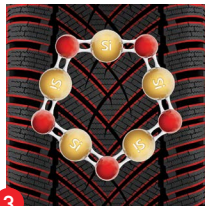
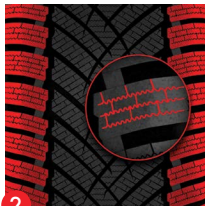
In all the graphs below, the longer the bar, the better the performance of the tyre



# SKI-TRAC HP



**This studless winter ultra-high performance tyre** is comprised of a unique, specially-made polymer compound designed to maintain high performance and stability during winter conditions. Its V-shaped design allows safe cornering and improved handling at high speeds, while the 3D shoulder sipes provide increased traction on snowy roads.






## ENGLISH

- A V-SHAPED DESIGN** an optimal V-shaped tread design allows for safe cornering and better handling at high speeds on wintry roads.
- SPECIAL 3D SIPES** these special shoulder sipes increase snow traction by creating extra biting edges.
- EXTRAORDINARY POLYMER COMPOUND** this unique polymer compound delivers excellent grip in dynamic winter conditions, ensuring high performance and stability.

## ITALIAN

- DESIGN A FORMA DI V** l'ottimale design del battistrada a forma di V consente una guida sicura in curva e una migliore maneggevolezza ad alte velocità su strade invernali.
- LAMELLE 3D SPECIALI** queste speciali lamelle sulla spalla aumentano la trazione sulla neve creando ulteriori spigoli di presa.
- STRAORDINARIA MESCOLO POLIMERICA** questa esclusiva miscela polimerica offre un'eccellente aderenza in condizioni invernali dinamiche, garantendo elevate prestazioni e stabilità.

**SKI-TRAC HP / STUDLESS**

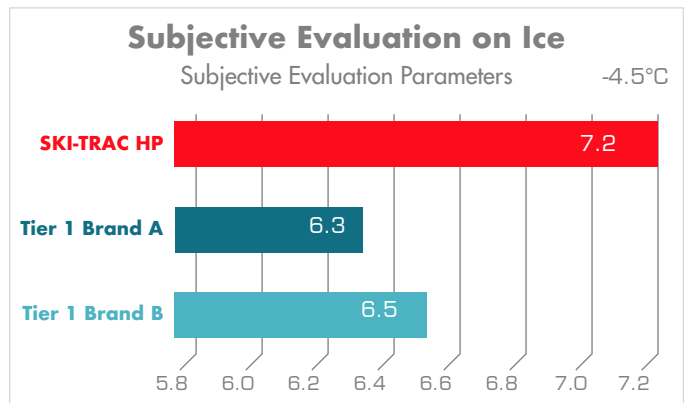
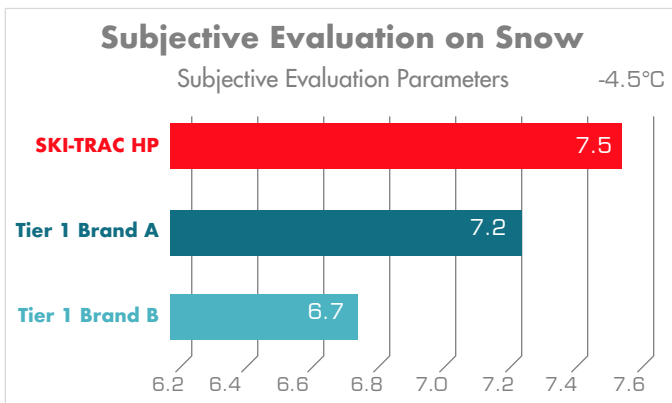
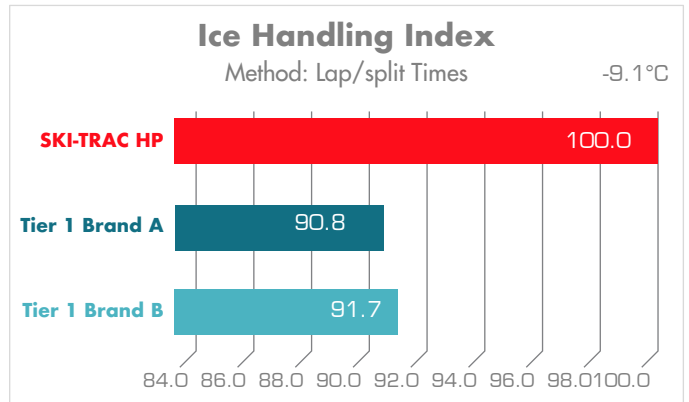
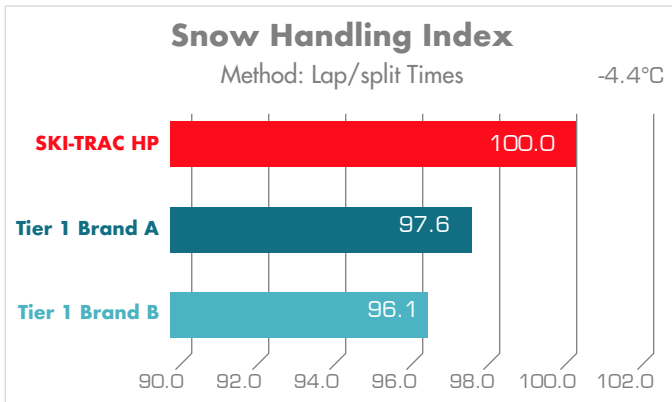
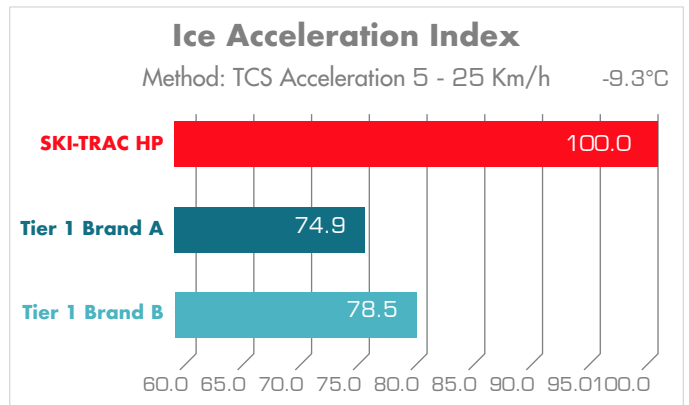
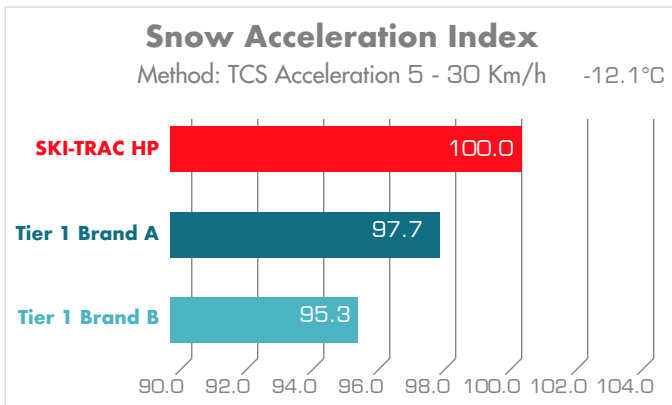
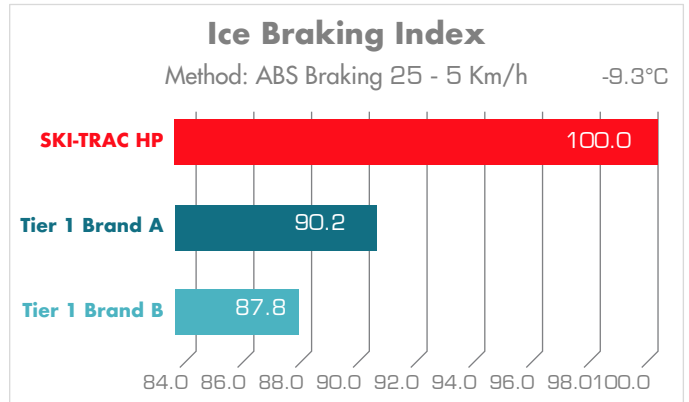
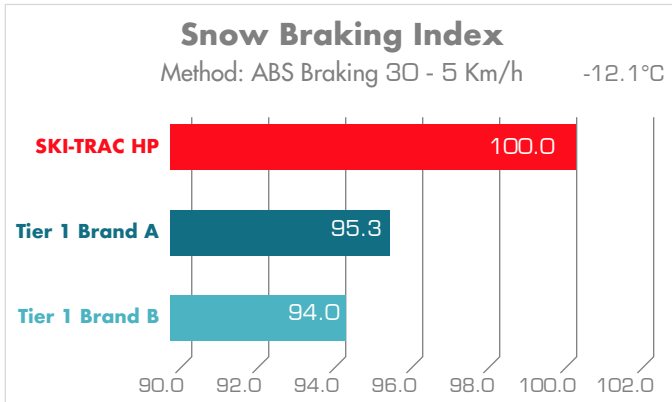
RIM DIA	ASPECT RATIO	TYRE SIZE	LOAD INDEX/SPEED SYMBOL	MAXIMUM LOAD (KGS)	MAX. INFLATION PRESSURE	RIM WIDTH	SECTION WIDTH	OVERALL DIAMETER	TREAD DEPTH	EU LABELING RATINGS		
				KGS	PSI	INCHES	MM	MM	MM			
16	55	215/55R16	97H XL	730	50	7.0	226	642	8.2	B	C	69dB/A
	60	215/60R17	96H	710	44	6.5	221	690	8.4	B	C	69dB/A
17	55	205/55R17	95V XL	690	50	6.5	214	658	8.2	B	C	69dB/A
		215/55R17	98V XL	750	50	7.0	226	668	8.2	B	C	69dB/A
	50	225/55R17	101V XL	825	50	7.0	233	680	8.2	B	C	69dB/A
		205/50R17	93V XL	650	50	6.5	214	638	7.9	B	C	69dB/A
18	45	225/50R17	98V XL	750	50	7.0	233	658	8.2	B	C	69dB/A
		225/45R17	94V XL	670	50	7.5	225	634	7.9	B	C	69dB/A
	40	245/45R18	100V XL	800	50	8.0	243	677	7.9	B	C	69dB/A
		225/40R18	92V XL	630	50	8.0	230	637	7.9	B	C	69dB/A
19	45	245/40R18	97V XL	730	50	8.5	248	653	7.9	B	C	69dB/A
		245/45R19	102V XL	850	50	8.0	243	703	7.9	B	C	69dB/A

**UPCOMING SIZES**

RIM DIA	ASPECT RATIO	TYRE SIZE	LOAD INDEX/SPEED SYMBOL
16	55	225/55R16	99H XL
		225/55R16	99V XL
17	50	215/50R17	95V XL
		235/50R17	100V XL
17	45	215/45R17	91V XL
		235/45R17	97H XL
		235/45R17	97V XL
18	45	225/45R18	95V XL
		235/45R18	98V XL
18	40	235/40R18	95V XL
		245/40R19	98V XL

# SKI-TRAC HP / TEST RESULTS

In all the graphs below, the longer the bar, the better the performance of the tyre



# SKI-TRAC S



The distribution of studs in this Studdable Winter tyre is designed to minimize noise and enhance the studs' effectiveness on ice. The rigid center part pattern geometry enables quick and precise steering response. Additionally, the high density of sipes enhances traction on snow. The tyre construction incorporates design choices that provide a well-balanced driving experience in harsh winter conditions as well as during the changing weather of autumn and spring. Special attention has been given to reducing noise through optimized layer gauges. The tread compound utilizes advanced polymers that are specifically optimized for low temperatures, working in conjunction with silica-silane filler interaction to ensure safe and smooth travel in severe winter conditions.



## ENGLISH

- 1. OPTIMIZED STUD DISTRIBUTION** designed to minimize noise and enhance the studs' effectiveness on ice.
- 2. RIGID CENTER TREAD PART WITH HIGH SIPE DENSITY** provides fast and precise steering response with improved traction on snow.
- 3. IMPROVED CONSTRUCTION** provides a well-balanced driving experience in harsh winter conditions as well as during the changing weather of autumn and spring.
- 4. ADVANCED COMPOUND POLYMERS** specifically optimized for low temperatures, working in conjunction with silica-silane filler interaction to ensure safe and smooth driving in severe winter conditions.

## ITALIAN

- 1. DISTRIBUZIONE OTTIMIZZATA DEI CHIODI** progettata per ridurre al minimo il rumore e migliorare l'efficacia dei chiodi sul ghiaccio.
- 2. PARTE CENTRALE RIGIDA DEL BATTISTRADA CON ALTA DENSITÀ DI LAMELLE** Garantisce una risposta dello sterzo rapida e precisa con una migliore trazione sulla neve.
- 3. STRUTTURA MIGLIORATA** offre un'esperienza di guida ben bilanciata sia nelle rigide condizioni invernali sia durante i cambiamenti climatici dell'autunno e della primavera.
- 4. POLIMERI AVANZATI DELLA MESCOLA** specificamente ottimizzati per le basse temperature, lavorano in combinazione con l'interazione tra silice e silano per garantire una guida sicura e fluida nelle più severe condizioni invernali.

SKI-TRAC S / STUDDABLE WINTER

RIM DIA	ASPECT RATIO	TYRE SIZE	LOAD INDEX/SPEED SYMBOL	MAXIMUM LOAD (KGS)	MAX. INFLATION PRESSURE	RIM WIDTH	SECTION WIDTH	OVERALL DIAMETER	TREAD DEPTH	EU LABELING RATINGS		
				KGS	PSI	INCHES	MM	MM	MM			
16	65	205/65R16	95T	690	44	6.0	209	672	9.5	D	D	72dB/B
		215/65R16	102T XL	850	51	6.5	221	686	9.5	D	D	72dB/B
	60	205/60R16	96T XL	710	51	6.0	209	652	9.5	D	D	72dB/B
		215/60R16	99T XL	775	51	6.5	221	664	9.5	D	D	72dB/B
	55	195/55R16	91T XL	615	51	6.0	201	620	9.5	D	D	72dB/B
		205/55R16	94T XL	670	51	6.5	214	632	9.5	D	D	72dB/B
17	65	215/65R17	103T XL	875	51	6.5	221	712	9.5	D	D	72dB/B
		225/65R17	106T XL	950	51	6.5	228	724	9.5	D	D	72dB/B
		235/65R17	108T XL	1000	51	7.0	240	738	9.5	D	D	72dB/B
		265/65R17	116T XL	1250	51	8.0	272	776	9.5	D	D	73dB/B
	60	215/60R17	100T XL	800	51	6.5	221	690	9.5	D	D	72dB/B
		225/60R17	103T XL	875	51	6.5	228	702	9.5	D	D	72dB/B
	55	215/55R17	98T XL	750	51	7.0	226	668	9.5	D	D	72dB/B
		225/55R17	101T XL	825	51	7.0	233	680	9.5	D	D	72dB/B
		235/55R17	103T XL	875	51	7.5	245	690	9.5	D	D	72dB/B
	50	215/50R17	95T XL	690	51	7.0	226	648	9.5	D	D	72dB/B
		225/50R17	98T XL	750	51	7.0	233	658	9.5	D	D	72dB/B
	45	225/45R17	94T XL	670	51	7.5	225	634	9.5	D	D	72dB/B
18	65	235/65R18	110T XL	1060	51	7.0	240	763	9.5	D	D	72dB/B
		265/65R18	114T	1180	44	8.0	272	801	9.5	D	D	73dB/B
	60	225/60R18	104T XL	900	51	6.5	228	727	9.5	D	D	72dB/B
		285/60R18	116T	1250	44	8.5	292	799	9.5	D	D	75dB/B
		235/60R18	107T XL	975	51	7.0	240	739	9.5	D	D	72dB/B
		265/60R18	114T XL	1180	51	8.0	272	775	9.5	D	D	73dB/B
	55	215/55R18	99T XL	775	51	7.0	226	693	9.5	D	D	72dB/B
		225/55R18	102T XL	850	51	7.0	233	705	9.5	D	D	72dB/B
		235/55R18	104T XL	900	51	7.5	245	715	9.5	D	D	72dB/B
		225/45R18	95T XL	690	51	7.5	225	659	9.5	D	D	72dB/B
19	45	235/45R18	98T XL	750	51	8.0	236	669	9.5	D	D	72dB/B
		225/55R19	103T XL	875	51	7.0	233	731	9.5	D	D	72dB/B
	55	235/55R19	105T XL	925	51	7.5	245	741	9.5	D	D	72dB/B
		255/50R19	107T XL	975	51	8.0	265	739	9.5	D	D	73dB/B
	45	245/45R19	102T XL	850	51	8.0	243	703	9.5	D	D	72dB/B
		235/55R20	102T	850	44	7.5	245	766	9.5	D	D	72dB/B
20	55	255/55R20	110T XL	1060	51	8.5	313	878	9.5	D	D	73dB/B
		265/55R20	113T XL	1150	44	8.5	313	878	9.5	D	D	73dB/B
	50	285/50R20	116T XL	1250	51	9.0	297	794	9.5	D	D	75dB/B

UPCOMING SIZES

RIM DIA	ASPECT RATIO	TYRE SIZE	LOAD INDEX/SPEED SYMBOL
17	50	205/50R17	93T XL
	55	255/55R18	109T XL
18	50	225/50R18	99T XL
	45	245/45R18	100T XL
19	55	245/55R19	107T XL
		255/55R19	111T XL
			265/55R19
20	50	245/50R20	105T XL

UPCOMING SIZES

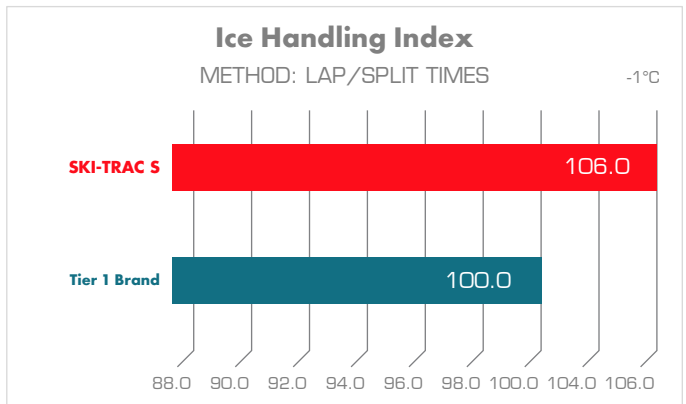
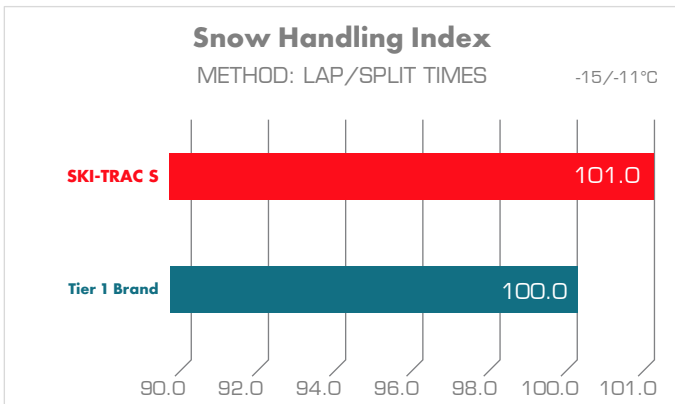
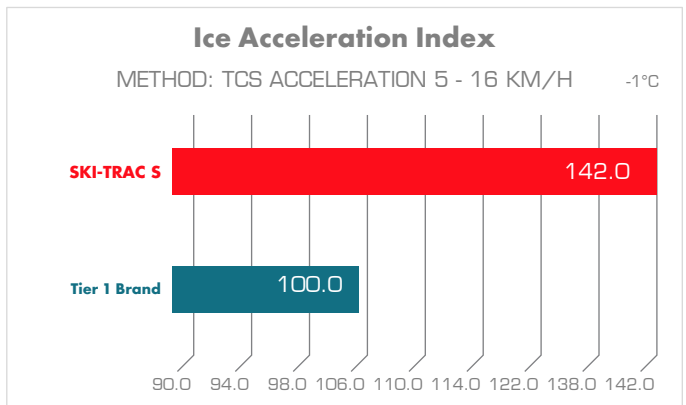
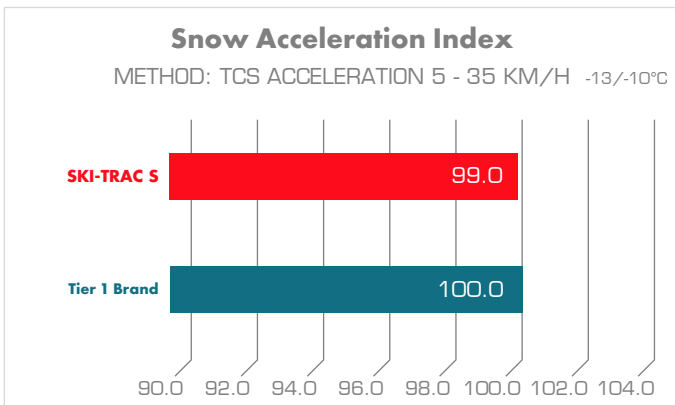
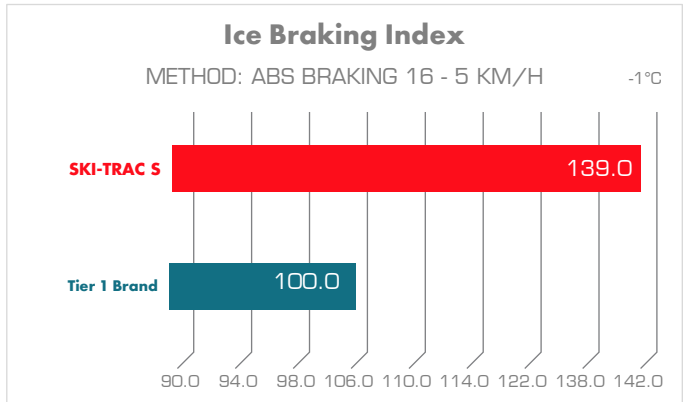
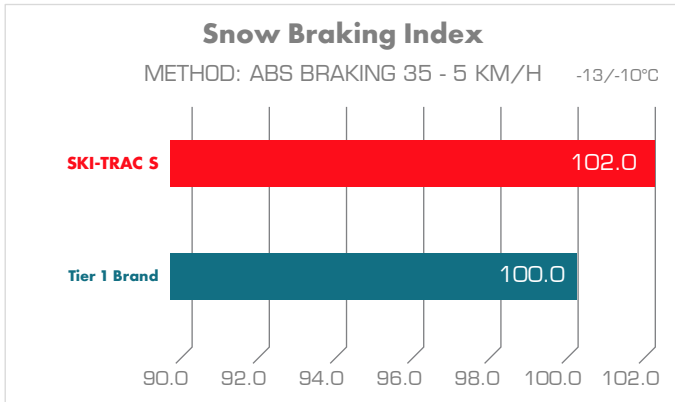
RIM DIA	ASPECT RATIO	TYRE SIZE	LOAD INDEX/SPEED SYMBOL
20	50	265/50R20	111T XL
		275/50R20	113T XL
	45	245/45R20	103T XL
		275/45R20	110T XL
21	40	275/40R20	106T XL
	35	275/35R20	102T XL
	50	275/50R21	113T XL
45	275/45R21	110T XL	

UPCOMING SIZES

RIM DIA	ASPECT RATIO	TYRE SIZE	LOAD INDEX/SPEED SYMBOL
21	45	285/45R21	113T XL
		285/40R21	109T XL
	40	295/40R21	111T XL
22	50	315/40R21	115T XL
		265/50R22	115T XL
	45	285/45R22	114T XL
		275/40R22	107T XL
40	285/40R22	110T XL	

# SKI-TRAC S / TEST RESULTS

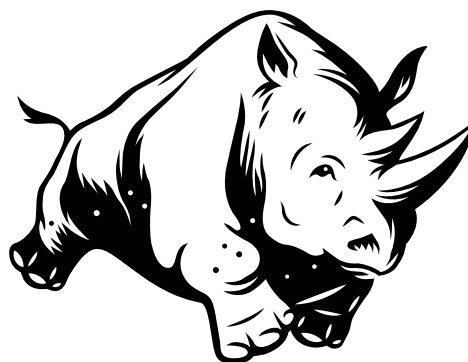
In all the graphs below, the longer the bar, the better the performance of the tyre



# UPCOMING WINTER

## SKI-TRAC SU

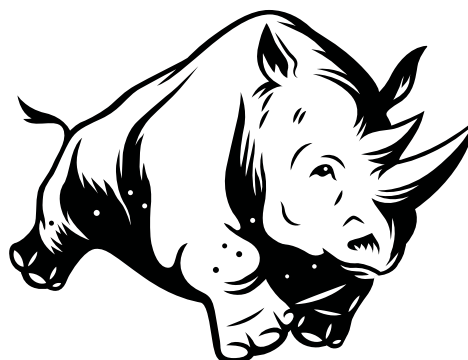
RIM DIA	ASPECT RATIO	TYRE SIZE	LOAD INDEX / SPEED SYMBOL
16	70	215/70R16	100H
	60	235/60R16	100H
		235/60R16	104H XL
17	65	225/65R17	102H
		225/65R17	106H XL
		235/65R17	108H XL
	60	225/60R17	99V
		225/60R17	103H XL
18	60	235/60R17	106H XL
		235/55R17	103V XL
		225/60R18	104H XL
	60	225/60R18	104V XL
		235/60R18	107H XL
	55	235/60R18	107V XL
		225/55R18	102H XL
225/55R18		102V XL	
		235/55R18	104H XL



**COMING SOON**

## SKI-TRAC VAN

RIM DIA	ASPECT RATIO	TYRE SIZE	LOAD INDEX / SPEED SYMBOL
15	70	195/70R15C	104/102S
		205/70R15C	106/104S
		215/70R15C	109/107S
		225/70R15C	112/110S
16	75	185/75R16C	104/102R
		195/75R16C	107/105S
		195/75R16C	110/108R
	65	205/75R16C	113/111S
		225/75R16C	121/120R
		205/65R16C	107/105T
60		215/65R16C	109/107R
	225/65R16C	112/110R	
	235/65R16C	115/113R	
17	60	235/65R16C	121/119R
		215/60R16C	103/101R
		215/60R16C	108/106R
		215/60R17C	109/107T



**COMING SOON**







**ARMSTRONGTIRE.EU**



ADDRESS: ZAFCO EUROPE GMBH  
HANS-BÖCKLER STR. 5  
37079 GÖTTINGEN, GERMANY  
FACEBOOK/INSTAGRAM - @ARMSTRONGTIRE