

2026 PRODUCT CATALOG

TRUCK & BUS RADIAL TYRES



A BRIEF RIDE THROUGH HISTORY

After a decade of promising growth, Armstrong purchases a small tyre manufacturing concern in New Haven, Connecticut.

1912 ←

A tyre dealer in New Jersey by the name of George F. Armstrong enters the tube and pneumatic tyre industry in a tiny loft.

→ 1922

Armstrong became the fifth largest tyre maker in the world, and ranked amongst the Fortune 500 companies.

1961 ←

Armstrong introduced the first bias-belted fiberglass tyre, one of many inventions.

→ 1965

The Armstrong Rubber Company moved into its \$7 million headquarters designed by renowned architect Michael Brauer in New Haven, Connecticut.

1970 ←

Armstrong achieved a record sales volume worth \$1 Billion.

→ 1986

Armstrong was acquired by Pirelli S.p.A, becoming Pirelli Armstrong Tyre Corporation.

1988 ←

Pirelli phases out the Armstrong brand in the latter half of the 1990s.

→ 1990

ZAFCO acquired the Armstrong brand from Pirelli with the goal of rebuilding it from the ground up.

2012 ←

Newly reengineered, the Armstrong brand returned to the tyre industry, continuing the Armstrong legacy of making premium products by quality-minded people.

→ 2015

2019 ←

Armstrong launched in Europe.

ABOUT US

Armstrong Tyres was founded in 1912 by George F. Armstrong in a small New Jersey loft. By the early 1960s, Armstrong had become a well-known tyre brand and the fifth largest tyre manufacturer in the world.

Over the past 10 years, we've been steadily working to bring back this trusted American tyre brand – and modernizing it into a premium product line. The next generation of Armstrong tyres is dedicated to quality, value, and safety. We're proud of continuing the Armstrong legacy of making quality tyres by quality-minded people.



WHY ARMSTRONG?

VALUE-DRIVEN PRICING PROGRAM

Our unique pricing program is designed to provide the highest value at the lowest possible cost and grow your profit margins.



SOPHISTICATED SAFETY MEASURES

Each tyre is X-ray inspected and subjected to thorough testing for performance, durability, and safety before leaving our factory floor.



A STELLAR SUITE OF SELL-OUT SUPPORT

Armstrong dealers receive sell-out support including training resources and marketing programs, so you have all the sales tools you need at your fingertips.



RECOGNIZABLE NAME WITH A RICH LEGACY

The Armstrong name was once a household name listed as a Fortune 500 company and the fifth largest tyre manufacturer in the world.



CASING INTEGRITY

The remarkable casing integrity of Armstrong tyres enables them to withstand more retreads over time, increasing lifespan, and ultimately reducing waste in landfills.



TYRE LINE-UP

STEER

DRIVE

TRAILER

ALL-POSITION

LONG-HAUL & REGIONAL →



ASH11+



ASH12



ATH11

REGIONAL →



ASR12



ADR11



ADR12



ATR12

ON/OFF ROAD (MIXED SERVICE) →



ASM11



ADM11



AOM11

CONSTRUCTION →



ADG11

URBAN →

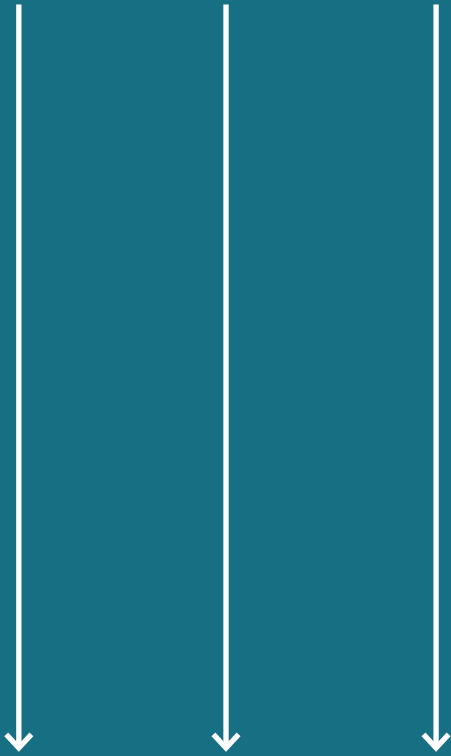


AOU11

TYRE PATTERN NAME GUIDE

EXAMPLE →

A S H



Armstrong
(BRAND)

Steer
(POSITION)

Highway
(APPLICATION)

LETTER

DEFINITION

TYPE

A

Armstrong

Brand

S

Steer

Position

D

Drive

Position

T

Trailer

Position

O

Omni (All-Position)

Position

H

Highway

Application

R

Regional

Application

M

Mixed Service

Application

G

Gravel

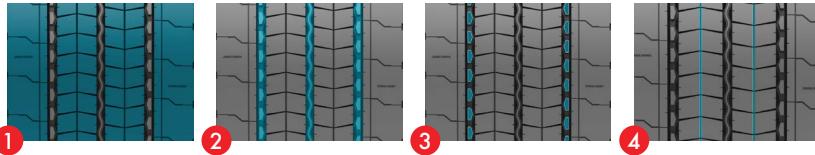
Application

U

Urban

Application

ASH11+ /



ENGLISH

1. **A COMPACT TREAD DESIGN** provides increased mileage and reduces operating costs.
2. **THREE WIDE LONGITUDINAL GROOVES** offer enhanced grip during all road conditions.
3. **CONTINUOUS STONE EJECTORS** on outer grooves reduce stone retention and drilling for enhanced casing life.
4. **SELF-GENERATING TREAD** blocks with hidden grooves that appear as the tread wears to offer better traction and safety.

BULGARIAN




1. **КОМПАКТНИЯТ ДИЗАЙН НА ПРОТЕКТОРА** предоставя увеличаване на пробега и намалява експлоатационните разходи.
2. **ТРИТЕ НАДЛЪЖНИ КАНАЛА** предоставят подобро сцепление при всякакви пътни условия.
3. **НЕПРЕКЪСНАТИТЕ ЕЖЕКТОРИ** за камъни на външните канали намаляват задържането на камъни и пробиване на корпуса, като по този начин се удължава експлоатационния живот.
4. **САМОГЕНЕРИРАЩИТЕ СЕ БЛОКОВЕ** на протектора със скрити канали, които се появяват при износването на протектора, предлагат по-добро сцепление и безопасност.

ROMANIAN

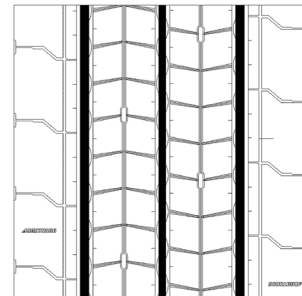
1. **UN DESIGN COMPACT AL BENZII DE RULARE** asigura un kilometraj sporit si reduce costurile operationale.
2. **TREI CANELURI LONGITUDINALE** largi ofera o aderenta imbunatatita în cazul tuturor condițiilor de drum.
3. **EJECTOARELE DE PIATRĂ CONTINUE** pe canelurile exterioare reduc retentia de piatra si riscul de perforare pentru o durata de viata imbunatatita a carcasei.
4. **I BLOCCABATTISTRADA AUTORIGENERANTI**, cu caneluri ascunse care apar odata ce banda de rulare se uzeaza pentru a oferi o tractiune si siguranta mai buna.

POSITIONS →

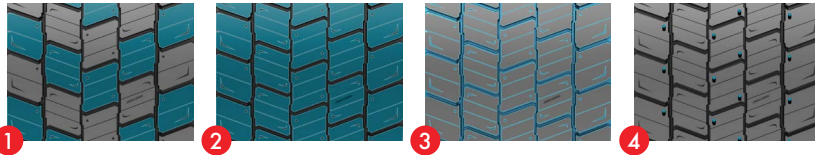


TYRE SIZE	PR	LOAD INDEX	SPEED SYMBOL	TREAD DEPTH	EU LABELING RATINGS		
				(MM)			
295/60R22.5	16	150/147	L	14.0	C	B	71dB/A
295/80R22.5	18	154/149	M	14.0	C	C	71dB/A
315/60R22.5	16	154/148	L	14.0	C	B	71dB/A
315/70R22.5	18	156/150	L	14.0	C	C	71dB/A
315/80R22.5	20	156/150	L	14.0	C	C	71dB/A
315/80R22.5	22	158/150	L	14.0	C	C	71dB/A

REGROOVING GUIDELINES		
TYRE SIZE	REGROOVING DEPTH	REGROOVING WIDTH
	(MM)	(MM)
295/60R22.5	2.5	9.0 - 10.0
295/80R22.5	2.5	8.0 - 10.0
315/60R22.5	2.5	9.0 - 10.0
315/70R22.5	2.5	8.0 - 10.0
315/80R22.5	2.5	8.0 - 10.0



ADR11 /



ENGLISH

1. **A UNIQUE DIRECTIONAL TREAD** design provides better traction during all weather conditions.
2. **COMPACT AND RIGID TREAD BLOCKS** equipped with varying sipe designs to reduce noise.
3. **HIDDEN LONGITUDINAL AND TRANSVERSAL GROOVES** ensure grip and traction throughout the lifetime.
4. **3D SIPES AND DEEP HOLES** in the tread blocks ensure quicker water evacuation.

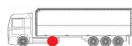
BULGARIAN




1. **Уникалният насочен дизайн на протектора** осигурява по-добро сцепление при всякакви метеорологични условия.
2. **Компактни и устойчиви блокове на протектора**, оборудвани с различни дизайни на ламелите за намаляване на шума.
3. **Скритите надлъжни и напречни канали** осигуряват добро сцепление през целия експлоатационен живот.
4. **3D ламелите и дълбоките отвори** в блоковете на протектора осигуряват по-бързо отвеждане на водата.

ROMANIAN

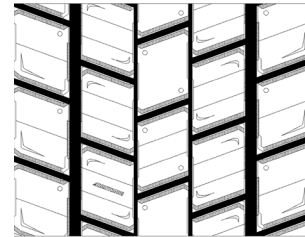
1. **Un model unic direcțional al benzii de rulare** ofera o tracțiune mai bună în toate condițiile de vreme.
2. **Blocuri ale benzii de rulare compacte și rigide** echipate cu o varietate de modele de striatii pentru a reduce zgomotul.
3. **Caneluri longitudinale și transversale ascunse** asigură o aderență și o tracțiune pe toată durata de viață a anvelopei.
4. **Striațiile 3D și găurile adânci** în blocurile benzii de rulare asigură o evacuare mai rapidă a apei.

POSITIONS →

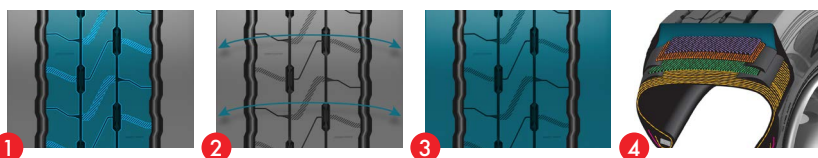


TYRE SIZE	PR	LOAD INDEX	SPEED SYMBOL	TREAD DEPTH	EU LABELING RATINGS		
				(MM)			
295/60R22.5	16	150/147	L	16.5	C	B	73dB/A
295/80R22.5	16	152/148	M	16.5	C	B	73dB/A
315/60R22.5	16	152/148	L	16.5	C	B	75dB/B
315/70R22.5	16	154/150	L	16.5	C	B	73dB/A
315/80R22.5	20	156/150	L	16.5	C	B	73dB/A

REGROOVING GUIDELINES		
TYRE SIZE	REGROOVING DEPTH	REGROOVING WIDTH
	(MM)	(MM)
295/60R22.5	2.5	7.0 - 8.0
295/80R22.5	2.5	7.0 - 8.0
315/60R22.5	2.5	7.0 - 8.0
315/70R22.5	2.5	7.0 - 8.0
315/80R22.5	2.5	7.0 - 8.0



ATH11



ENGLISH

- 1. SELF-GENERATING, INNOVATIVE TREAD DESIGN** with hidden longitudinal grooves and sipes in three center ribs provide better traction throughout the tyre's lifespan.
- 2. WIDER TREAD PATTERN WITH SOLID SHOULDER RIBS** and a special tread formula provide optimal footprint while resisting lateral scrubbing.
- 3. OPTIMIZED TREAD AND LOW HYSTERESIS COMPOUND** provides lower rolling resistance leading to better fuel efficiency and higher mileage.
- 4. STRONGER BODY PLY AND FOUR STEEL BELTS** enhance service life and retreadability.

BULGARIAN




- 1. САМОГЕНЕРИРАЩ СЕ ИНОВАТИВЕН** дизайн на протектора със скрити надлъжни канали и ламели осигурява по-добро сцепление през целия живот на гумата.
- 2. ПО-ШИРОКАТА ШАРКА НА ПРОТЕКТОРА СЪС СОЛИДНИ** раменни ребра и специалната форма на протектора осигуряват оптимален отпечатък, като същевременно издържат на странично търкане.
- 3. ОПТИМИЗИРАН ПРОТЕКТОР** и смес с нисък хистерезис осигуряват по-ниско съпротивление при експлоатация, което води до по-добра горивна ефективност и по-голям пробег.
- 4. ПОДСИЛЕНИЯТ СЛОЙ НА ПРОТЕКТОРА** и четирите стоманени колана удължават живота и способността за регенериране.

ROMANIAN

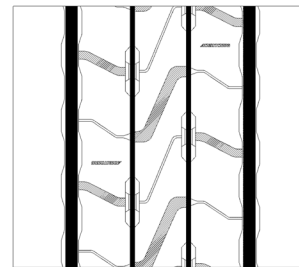
- 1. AUTO-GENERATOR, MODEL INOVATOR AL BENZII DE RULARE** cu caneluri longitudinale ascunse și striatii în trei nervuri centrale ofera o tracțiune mai bună pe durata de viață a anvelopei.
- 2. UN MODEL MAI LARG AL BENZII DE RULARE CU NERVURI LATERALE SOLIDE** și o formula specială a benzii de rulare conferă o amprentă optimă de rezistență la frecarea laterală.
- 3. BANDĂ DE RULARE OPTIMIZATĂ ȘI COMPUSUL HISTEREZIC SCĂZUT** ofera o rezistență la rulare scăzută conducând la o eficiență mai mare a consumului de combustibil și un kilometraj mai mare.
- 4. PLIURI ALE CARCASEI MAI PUTERNICE ȘI PATRU CURELE DE OȚEL** îmbunătățesc durata de viață și capacitatea de reșapare.

POSITIONS →

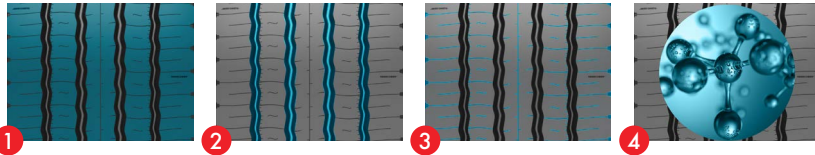


TYRE SIZE	PR	LOAD INDEX	SPEED SYMBOL	TREAD DEPTH	EU LABELING RATINGS		
				(MM)			
385/55R19.5	18	156	J	13.0	C	B	71dB/A
435/50R19.5	-	160	J	13.0	C	B	71dB/A
435/50R19.5	-	164	J	13.0	C	B	71dB/A
445/45R19.5	-	160	J	13.0	C	B	71dB/A
445/45R19.5	-	164	J	13.0	C	B	71dB/A
385/55R22.5	20	160	K	14.5	B	B	71dB/A
385/65R22.5	20	160	K	14.5	B	B	71dB/A
385/65R22.5	24	164	K	14.5	B	B	71dB/A

REGROOVING GUIDELINES		
TYRE SIZE	REGROOVING DEPTH	REGROOVING WIDTH
	(MM)	(MM)
385/55R19.5	2.5	8.0 - 9.0
435/50R19.5	2.5	8.0 - 9.0
445/45R19.5	2.5	8.0 - 9.0
385/55R22.5	2.5	8.0 - 9.0
385/65R22.5	2.5	8.0 - 9.0



ASH12 /



ENGLISH

1. **STRONG SHOULDER RIBS** and a five-rib tread pattern designed for exceptional steering, while a pyramid-base rib design offers reduced rolling resistance that evolves with wear.
2. **FOUR WIDE ZIGZAG GROOVES** specially designed to ensure quicker water evacuation and avoid stone trapping and casing damage.
3. **SPECIALLY DESIGNED SIPES** reduce braking distance and increase resistance to irregular wear.
4. **AN INNOVATIVE TREAD COMPOUND** provides higher mileage and lower fuel consumption.

BULGARIAN




1. **ПОДСИЛЕНИТЕ РАМЕНА** и проектирания модел на протектора с пет ребра за изключително управление, както и пирамидният дизайн на ребрата спомага за редуциране на съпротивлението, което е в пряка зависимост с износването.
2. **ЧЕТИРИ ШИРОКИ ЗИГЗАГООБРАЗНИ КАНАЛА** са специално проектирани да осигурят по-бързо отстраняване на водата и да избегнат улавяне на камъни и повреда на корпуса.
3. **СПЕЦИАЛНО ПРОЕКТИРАНИТЕ** ламели намаляват спирачния път и увеличават устойчивостта срещу неравномерно износване.
4. **ИНОВАТИВНА СМЕС НА ПРОТЕКТОРА** осигурява по-голям пробег и по-нисък разход на гориво.

ROMANIAN

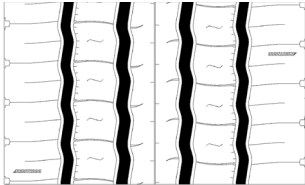
1. **NERVURI EXTERIOARE PUTERNICE** si un model al benzii de rulare de cinci nervuri conceput pentru o directie exceptionala, în timp ce un design de baza piramidala al nervurii ofera o rezistenta redusa la rulare, aceasta evoluând odata cu uzura.
2. **PATRU CANELURI ÎN ZIGZAG LARGI** concepute pentru a asigura o evacuare mai rapida a apei si pentru a evita prinderea pietrelor si deteriorarea carcasei.
3. **STRIATIILE SPECIAL CONCEPTE** reduc distanta de frânare si sporesc rezistenta la o rulare neregulata.
4. **UN COMPUS INOVATIV AL BENZII DE RULARE** ofera un kilometraj mai mare si un consum mai mic de combustibil.

POSITIONS →

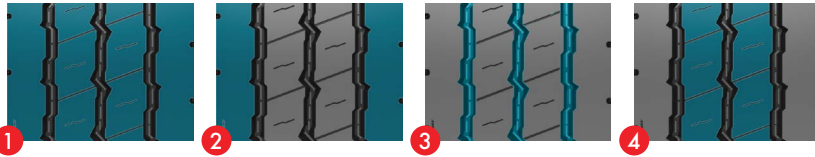
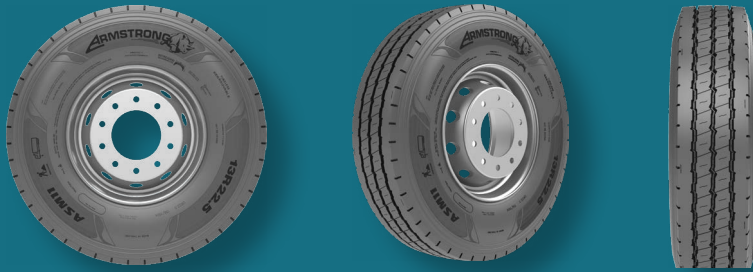


TYRE SIZE	PR	LOAD INDEX	SPEED SYMBOL	TREAD DEPTH	EU LABELING RATINGS		
				(MM)			
385/55R22.5	20	160	K	15.0	C	B	70dB/A
385/65R22.5	20	160	K	15.5	C	B	70dB/A
385/65R22.5	24	164	K	15.5	C	B	70dB/A

REGROOVING GUIDELINES		
TYRE SIZE	REGROOVING DEPTH	REGROOVING WIDTH
	(MM)	(MM)
385/55R22.5	2.5	5.0 - 6.0
385/65R22.5	2.5	5.0 - 6.0



ASM11 /



ENGLISH

1. **A FUSION OF RIB AND LUG TREAD** designs provide better traction and reduced braking distance.
2. **A SET OF WIDE, SOLID SHOULDER** offer enhanced protection for the casing during all road conditions.
3. **STONE EJECTORS IN ALL THREE GROOVES** increase tyre rigidity.
4. **A SPECIAL TREAD BLOCK** designed for mixed applications featuring wide and deep grooves.

BULGARIAN




1. **КОМБИНАЦИЯТА ОТ ЛАМЕЛИ** и дизайна на протектора осигуряват по-добро сцепление и намален спирачен път.
2. **ШИРОКОТО И СОЛИДНО РАМО** предлага подобрена защита за корпуса при всякакви пътни условия.
3. **ЕЖЕКТОРИТЕ ЗА КАМЪНИ** във всичките три канала увеличават устойчивостта на гумата.
4. **СПЕЦИАЛЕН БЛОК НА ПРОТЕКТОРА**, предназначен за смесени приложения, включващ широки и дълбоки канали.

ROMANIAN

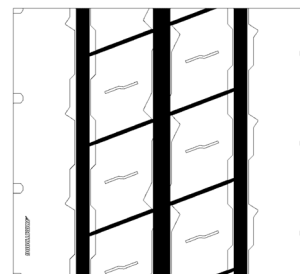
1. **O FUZIUNE DE NERVURI SI TIJE ALE BENZII DE RULARE** ofera o tractiune mai buna si reduc distanta de frânare.
2. **UN SET DE UMERI LATERALI SOLIZI SI LARGI** ofera o protectie îmbunatatita a carcasei în cazul tuturor conditiilor de drum.
3. **EJECTOARELE DE PIATRA ÎN TOATE CELE TREI CANELURI** sporesc rigiditatea anvelopei.
4. **UN BLOC SPECIAL AL BENZII DE RULARE** creat pentru aplicatii mixte împreuna cu caneluri largi si adânci.

POSITIONS →

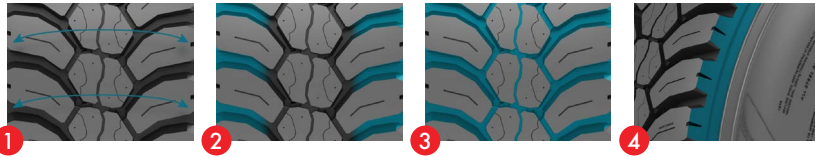


TYRE SIZE	PR	LOAD INDEX	SPEED SYMBOL	TREAD DEPTH	EU LABELING RATINGS		
				(MM)			
13R22.5	18	156/150	K	16.5	C	C	70dB/A
315/80R22.5	20	156/150	K	16.5	C	C	70dB/A

REGROOVING GUIDELINES		
TYRE SIZE	REGROOVING DEPTH	REGROOVING WIDTH
	(MM)	(MM)
13R22.5	2.5	7.0 - 8.0
315/80R22.5	2.5	7.0 - 8.0



ADM11 /



ENGLISH

1. **A WIDE AND DEEP TREAD** design delivers longer mileage and exceptional stability.
2. **AN OPEN SHOULDER DESIGN** enables quicker water and mud evacuation.
3. **VARIABLE-WIDTH GROOVES** Leads to lower stone retention and protects the casing for enhanced retreadability.
4. **AN IMPROVED BLOCK PROFILE** resists off-road abuse and reduces tread wear and tear.

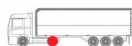
BULGARIAN




1. **ШИРОКИЯТ И ДЪЛБОК** дизайн на протектора осигурява по-дълъг пробег и изключителна стабилност.
2. **ДИЗАЙНЪТ С ОТВОРЕНО** рамо позволява по-бързото отводняване на вода и кал.
3. **КАНАЛИТЕ С ПРОМЕНЛИВА** ширина водят до по-ниско задържане на камъни, като същевременно защитават корпуса за подобрена възможност за регенериране.
4. **ПОДОБРЕНИЯТ ПРОФИЛ** издържа на OFF-ROAD условия и намалява износването и разкъсването на протектора.

ROMANIAN

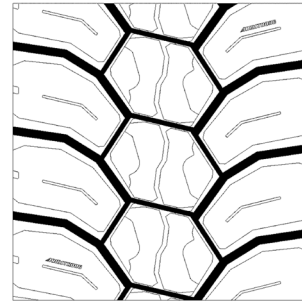
1. **UN MODEL AL BENZII DE RULARE LARG ȘI ADÂNC** asigura un kilometraj mai bun și o stabilitate extraordinară.
2. **UN MODEL DESCHIS** permite o evacuare mai rapidă a apei și a noroiului.
3. **CANELURILE CU O LĂȚIME VARIABILĂ** conduc la o retenție mai redusă a pietrelor protejând în același timp carcasa pentru o capacitate de reșapare îmbunătățită.
4. **UN PROFIL AL BLOCURILOR ÎMBUNĂȚIT** creșta abuzurilor din afara drumurilor și reduce uzura și ruperea benzii de rulare.

POSITIONS →

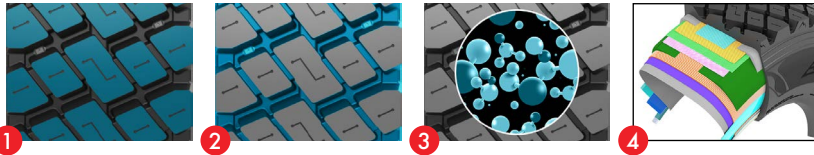


TYRE SIZE	PR	LOAD INDEX	SPEED SYMBOL	TREAD DEPTH	EU LABELING RATINGS		
				(MM)			
13R22.5	18	156/150	K	21.0	D	C	73dB/A
315/80R22.5	18	156/150	K	21.0	D	C	73dB/A

REGROOVING GUIDELINES		
TYRE SIZE	REGROOVING DEPTH	REGROOVING WIDTH
	(MM)	(MM)
13R22.5	2.5	7.0 - 8.0
315/80R22.5	2.5	7.0 - 8.0



ADG11 /



ENGLISH

1. **OPEN SHOULDER AND BLOCK DESIGN** for excellent traction and release the heat for high durability.
2. **WIDER OPTIMIZED GROOVES WITH STONE EJECTORS** to prevent stone trapping and improve the retreadability.
3. **CUT- AND CHIP-RESISTANT TREAD COMPOUND** to resist the pattern tearing and provide longer mileage and low CPK.
4. **A ROBUST CASING** stronger casing with four steel belts enhances service life and retreadability.

BULGARIAN




1. **ДИЗАЙН С ОТВОРЕНИ БЛОКОВЕ, ВКЛ. РАМЕННИ** за отлично сцепление и освобождаване на топлината с цел висока издръжливост.
2. **ПО-ШИРОКИ, ОПТИМИЗИРАНИ КАНАЛИ С ИЗХВЪРЛЯЧИ НА КАМЪНИ** за предотвратяване на задържането на камъни и по-лесна смяна на протектора.
3. **МАТЕРИЯТА, ИЗПОЛЗВАНА ЗА ПРОТЕКТОРА Е УСТОЙЧИВА НА РЯЗАНЕ И ИЗНОСВАНЕ** Предотвратява скъсване на шарката на протектора и осигурява по-дълъг пробег и нисък разход на километър.
4. **ЗДРАВА КОНСТРУКЦИЯ** по-здрава конструкция с четири стоманени пояса удължава жизнения цикъл и подобрява възможността за смяна на протектора.

ROMANIAN

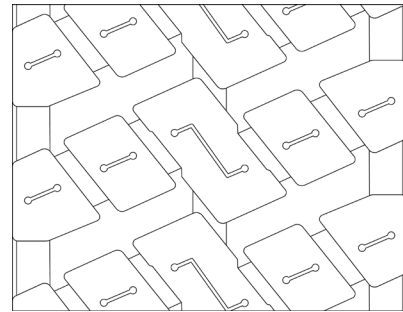
1. **DESIGN DESCHIS AL UMĂRULUI ȘI AL BLOCURILOR** pentru tracțiune excelentă și disiparea căldurii, oferind o durabilitate ridicată.
2. **CANELURI LĂRGITE OPTIMIZATE CU EJECTOARE DE PIETRE** pentru a preveni prinderea pietrelor și a îmbunătăți posibilitatea de reșapare.
3. **COMPOZIȚIE A BENZII DE RULARE REZISTENTĂ LA TĂIETURI ȘI PRINDERI** pentru a rezista la rupturile modelului și a oferi o durată de viață mai lungă și un cost pe kilometru scăzut.
4. **CARCASĂ ROBUSTĂ** o carcasă mai solidă cu patru curele din oțel care îmbunătățesc durata de serviciu și posibilitatea de reșapare.

POSITIONS →



TYRE SIZE	PR	LOAD INDEX	SPEED SYMBOL	TREAD DEPTH	EU LABELING RATINGS		
				(MM)			
12R22.5	16	152/148	K	22.5			
295/80R22.5	16	152/148	K	22.5	NOT APPLICABLE FOR POR CATEGORY		
315/80R22.5	20	156/150	K	22.5			

REGROOVING GUIDELINES		
TYRE SIZE	REGROOVING DEPTH	REGROOVING WIDTH
	(MM)	(MM)
12R22.5	2.5	8.0 - 9.0
295/80R22.5	2.5	8.0 - 10.0
315/80R22.5	2.5	8.0 - 10.0



AOM11 /



ENGLISH

1. **WIDE TREAD BLOCK DESIGN** with optimized tie bar to ensure even wear and excellent traction for on/off road condition.
2. **EXTRA WIDE GROOVE DESIGN** to avoid stone trapping and provide excellent traction.
3. **SPECIAL CUT/CHIP TREAD COMPOUND** to resist off road abuse and provide higher mileage.

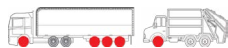
BULGARIAN




1. **ШИРОК ДИЗАЙН НА БЛОКОВЕТЕ НА ПРОТЕКТОРА** с оптимизирана свързваща лента, за да се осигури равномерно износване и отлично сцепление за всякакви пътни условия и настилки.
2. **ДИЗАЙН С МНОГО ШИРОКИ КАНАЛИ, ЗА ДА СЕ ИЗБЕГНЕ** задържането на камъни и да се осигури отлично сцепление.
3. **СПЕЦИАЛНА МАТЕРИЯ ЗА ПРОТЕКТОРА ПРОТИВ РЯЗАНЕ И ИЗНОСВАНЕ** за устойчивост на офроуд терен и осигуряване на по-дълъг пробег.

ROMANIAN

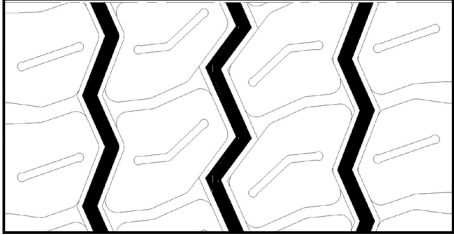
1. **DESIGN CU BLOCURI LATE ALE BENZII DE RULARE** optimizată pentru a asigura uzura uniformă și tracțiunea excelentă în condiții de drumuri mixte.
2. **DESIGN CU CANELURI EXTRA LATE** pentru a evita prinderea pietrelor și a oferi tracțiune excelentă.
3. **COMPOZIȚIE SPECIALĂ A BENZII DE RULARE REZISTENTĂ LA TĂIETURI/PRINDERI** pentru a rezista abuzurilor din teren accidentat și a oferi un kilometraj mai mare.

POSITIONS →

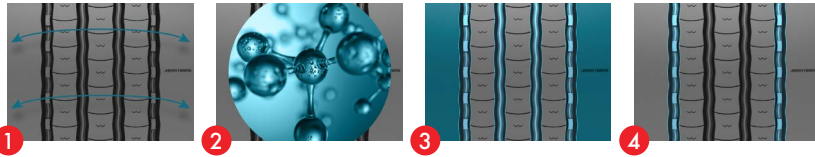
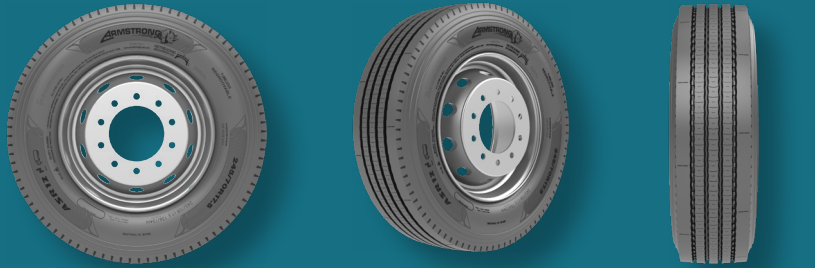


TYRE SIZE	PR	LOAD INDEX	SPEED SYMBOL	TREAD DEPTH	EU LABELING RATINGS		
				(MM)			
385/65R22.5	20	160	K	18.0	D	A	73dB/A
385/65R22.5	24	164	K	18.0	C	A	73dB/A
425/65R22.5	20	165	K	18.0	D	A	73dB/A
445/65R22.5	20	169	K	17.0	C	A	73dB/A

REGROOVING GUIDELINES		
TYRE SIZE	REGROOVING DEPTH	REGROOVING WIDTH
	(MM)	(MM)
385/65R22.5	3.0	9.0 - 11.0
425/65R22.5	3.0	9.0 - 11.0
445/65R22.5	3.0	9.0 - 11.0



ASR 12 /



ENGLISH

1. **A WIDE TREAD PATTERN** with sipes in three center ribs provide exceptional grip across all road conditions.
2. **LOW HYSTERESIS COMPOUND** leads to low rolling resistance and better fuel efficiency, while delivering extraordinary mileage.
3. **SOLID SHOULDER RIBS** with four grooves provide excellent handling and driving stability.
4. **INNOVATIVE OUTER GROOVES** with a variable groove angle design and stone ejectors reduce stone retention and drilling for enhanced casing life.

BULGARIAN




1. **ШИРОКАТА ШАРКА НА ПРОТЕКТОРА** и ламелите в трите централни канала осигурява изключително сцепление при всякакви пътни условия.
2. **КОМПОНЕНТЪТ С НИСЪК ХИСТЕРЕЗИС** води до ниско съпротивление и по-добра горивна ефективност, като същевременно осигурява изключителен пробег.
3. **СОЛИДНИТЕ РАМЕНИ РЕБРА** и четирите канала осигуряват отлично управление и стабилност при шофиране.
4. **ИНОВАТИВНИТЕ ВЪНШНИ КАНАЛИ** с дизайн с променлив ъгъл и ежектори за камъни намаляват риска от задържането на камъни и пробиването на корпуса.

ROMANIAN

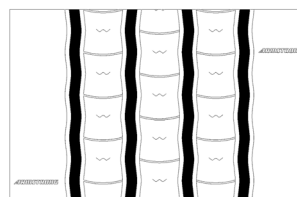
1. **UN MODEL LAT AL BENZII DE RULARE** cu striatii în trei nervuri centrale ofera o aderenta exceptionala pe toate conditiile de drum.
2. **COMPUSUL HISTEREZIC SCĂZUT** conduce la o rezistenta mica la rulare si o eficienta mai buna a consumului de combustibil, în acelasi timp oferind un kilometraj extraordinar.
3. **NERVURILE EXTERIOARE SOLIDE** cu patru caneluri ofera o manevrabilitate excelenta si o conducere stabila.
4. **CANELURILE EXTERNE INOVATIVE** cu un model unghiular variabil al canelurii wi ejectoarele de pietre reduc retentia si perforarea pentru o durata de viata îmbunatatita a carcasei.

POSITIONS →

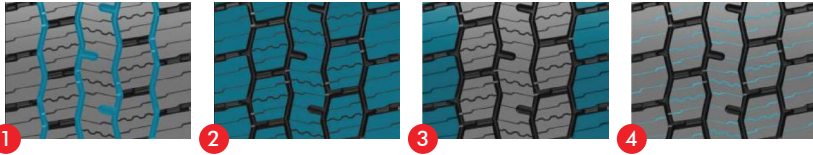
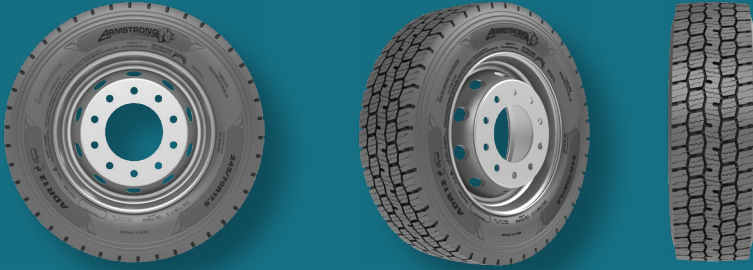


TYRE SIZE	PR	LOAD INDEX	SPEED SYMBOL	TREAD DEPTH	EU LABELING RATINGS		
				(MM)			
205/75R17.5	12	124/122	M	12.0	C	B	70dB/A
215/75R17.5	12	126/124	M	12.0	D	B	70dB/A
215/75R17.5	14	128/126	M	12.0	D	B	70dB/A
225/75R17.5	14	129/127	M	12.0	C	B	70dB/A
235/75R17.5	14	132/130	M	12.0	C	B	70dB/A
245/70R17.5	16	136/134	M	12.0	C	B	70dB/A
265/70R17.5	16	140/138	M	13.0	C	B	71dB/A
245/70R19.5	16	136/134	M	13.0	C	B	70dB/A
265/70R19.5	14	140/138	M	13.0	C	B	70dB/A
285/70R19.5	16	146/144	M	13.0	C	B	71dB/A

REGROOVING GUIDELINES		
TYRE SIZE	REGROOVING DEPTH	REGROOVING WIDTH
	(MM)	(MM)
205/75R17.5	2.5	6.0 - 7.0
215/75R17.5	2.5	6.0 - 7.0
225/75R17.5	2.5	6.0 - 7.0
235/75R17.5	2.5	6.0 - 7.0
245/70R17.5	2.5	6.0 - 7.0
265/70R17.5	2.5	6.0 - 7.0
245/70R19.5	2.5	6.0 - 7.0
265/70R19.5	2.5	6.0 - 7.0
285/70R19.5	2.5	6.0 - 7.0



ADR12 /



ENGLISH

1. **FOUR CHANNEL PATTERN WITH ZIGZAG GROOVES** for longer tread life with excellent traction on all road conditions.
2. **A COMBINATION OF "RIB AND BLOCK" PATTERN STRUCTURE** resists irregular wear such as heel and toe wear.
3. **WIDE OPEN SHOULDER TREAD DESIGN** for enhanced stability, longer mileage and better handling performance.
4. **UNIQUE SIPES ON ALL TREAD BLOCKS** enhance wet grip and snow grip performance.

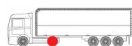
BULGARIAN




1. **ЧЕТИРИ ШИРОКИ ЗИГ-ЗАГООБРАЗНИ КАНАЛА** - за по-дълъг живот на протектора с отлично сцепление при всякакви пътни условия.
2. **КОМБИНАЦИЯ ОТ СТРУКТУРАТА НА ШАРКАТА „РЕБРО И БЛОК“** - устойчив на неравномерно износване (на външните ръбове и раменете).
3. **ШИРОКО ОТВОРЕН ДИЗАЙН НА РАМЕНЕТЕ** - за повишена стабилност, по-дълъг пробег и по-добро управление.
4. **УНИКАЛНИ ЛАМЕЛИ НА ВСИЧКИ БЛОКОВЕ.** Подобрено представяне на мокри и снежни настилки.

ROMANIAN

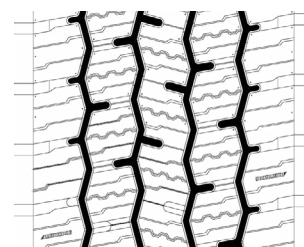
1. **MODEL CU PATRU CANALE CU CANELURI ÎN ZIGZAG.** Pentru o durată de viață mai lungă a benzii de rulare cu o tracțiune excelentă în toate condițiile de drum.
2. **O COMBINAȚIE DE STRUCTURĂ A MODELULUI „NERVURĂ ȘI BLOC”.** Rezistă la uzura neregulată (uzura tip „vârf-călcâi”).
3. **DESIGNUL BENZII DE RULARE CU UMĂR LARG DESCHIS** Pentru o stabilitate sporită, un kilometraj mai mare și o performanță mai bună de manevrare.
4. **ȘANȚURI UNICE PE TOATE BLOCURILE BENZII DE RULARE** Îmbunătățesc performanțele de aderență pe carosabil umed și pe zăpadă

POSITIONS →

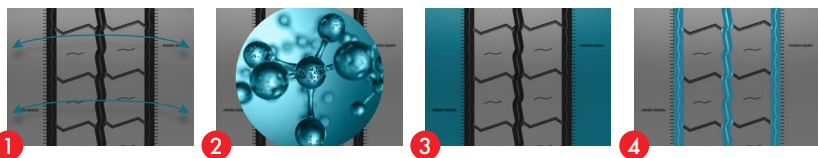


TYRE SIZE	PR	LOAD INDEX	SPEED SYMBOL	TREAD DEPTH	EU LABELING RATINGS		
				(MM)			
205/75R17.5	12	124/122	M	12.5	D	B	73dB/A
215/75R17.5	12	126/124	M	13.5	E	B	73dB/A
225/75R17.5	14	129/127	M	13.0	D	B	73dB/A
235/75R17.5	14	132/130	M	13.0	D	B	73dB/A
245/70R17.5	16	136/134	M	13.0	D	B	73dB/A
265/70R17.5	16	140/138	M	15.0	D	B	74dB/B
265/70R19.5	14	140/138	M	15.0	D	B	73dB/A
285/70R19.5	16	146/144	M	15.0	D	B	74dB/B

REGROOVING GUIDELINES		
TYRE SIZE	REGROOVING DEPTH	REGROOVING WIDTH
	(MM)	(MM)
205/75R17.5	2.5	6.0 - 7.0
215/75R17.5	2.5	6.0 - 7.0
225/75R17.5	2.5	6.0 - 7.0
235/75R17.5	2.5	6.0 - 7.0
245/70R17.5	2.5	6.0 - 7.0
265/70R17.5	2.5	6.0 - 7.0
265/70R19.5	2.5	6.0 - 7.0
285/70R19.5	2.5	6.0 - 7.0



ATR 12 /



ENGLISH

1. **WIDE TREAD WITH INCREASED TREAD CONTACT** area helps reduce irregular wear.
2. **IMPROVED TREAD COMPOUND** leads to low rolling resistance and better fuel efficiency.
3. **SOLID SHOULDER RIBS** enable efficient braking on dry and wet surfaces.
4. **INNOVATIVE CIRCUMFERENTIAL GROOVE** design offers quicker water evacuation while improving trailer stability.

BULGARIAN




1. **ПО-ШИРОКИТЕ ПРОТЕКТОРИ** с увеличен контакт между тях помагат за намаляване на неравномерното износване.
2. **ПОДОБРЕНАТА СМЕС НА ПРОТЕКТОРА** води до по-ниско съпротивление при експлоатация и по-добра горивна ефективност.
3. **СОЛИДНИТЕ РАМЕННИ РЕБРА** спомогат за ефективното спиране на сухи и мокри повърхности.
4. **ИНОВАТИВНИЯТ ДИЗАЙН** на ламелите по периферията предлага по-бързо отвеждане на водата, като същевременно подобрява стабилността на ремаркетото.

ROMANIAN

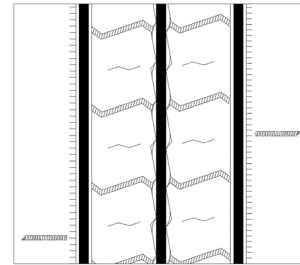
1. **BENZILE LARGI CU O ZONĂ DE CONTACT CRESCUTĂ A BENZII DE RULARE** ajuta la reducerea uzurii neregulate.
2. **COMPUSUL BENZII DE RULARE ÎMBUNĂTĂȚIT** conduce la o rezistență scăzută la rulare și o mai bună eficiență a consumului de combustibil.
3. **NERVURILE EXTERNE SOLIDE** permit frânarea eficientă pe suprafețe uscate și ude.
4. **MODELUL INOVATIV AL CANELURILOR CIRCUMFERENȚIARE** oferă o evacuare mai rapidă a apei în timp ce îmbunătățește stabilitatea remorcii.

POSITIONS →

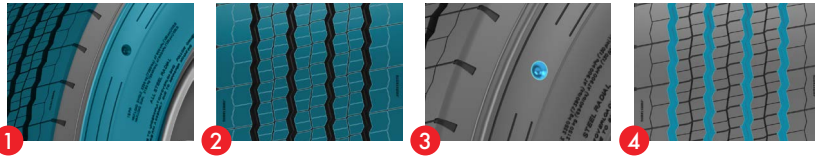


TYRE SIZE	PR	LOAD INDEX	SPEED SYMBOL	TREAD DEPTH	EU LABELING RATINGS		
				(MM)			
205/65R17.5	18	132/130	J	11.0	C	B	70dB/A
215/75R17.5	16	135/133	J	12.0	C	B	69dB/A
235/75R17.5	18	143/141	J	12.0	C	B	69dB/A
245/70R17.5	18	143/141	J	12.5	C	B	70dB/A
245/70R19.5	18	141/140	J	12.0	C	B	70dB/A
265/70R19.5	18	143/141	J	12.0	C	B	69dB/A
285/70R19.5	18	150/148	J	12.0	C	B	70dB/A

REGROOVING GUIDELINES		
TYRE SIZE	REGROOVING DEPTH	REGROOVING WIDTH
	(MM)	(MM)
205/65R17.5	2.5	4.0 - 5.0
215/75R17.5	2.5	4.0 - 5.0
235/75R17.5	2.5	4.0 - 5.0
245/70R17.5	2.5	4.0 - 5.0
245/70R19.5	2.5	4.0 - 5.0
265/70R19.5	2.5	4.0 - 5.0
285/70R19.5	2.5	4.0 - 5.0



AOU11 /



ENGLISH

1. **URBAN PATTERN** with extra thick sidewall offers protection against shocks, impacts and kerb scrubbing.
2. **A FIVE-RIB WIDE TREAD AND SIPES** ensure excellent handling and grip on both dry and wet road conditions.
3. **SIDEWALL WEAR INDICATORS** signal when it's time for tyre rotation to avoid damage to the body ply, improving safety, and retreadability.
4. **SPECIAL GROOVES** designed to avoid stone trapping and casing damage.

BULGARIAN




1. **ГРАДСКИЯТ МОДЕЛ С ИЗКЛЮЧИТЕЛНО** дебела странична стена, предлага защита при удари и търкане в бордюри.
2. **ШИРОКИЯТ ПРОТЕКТОР С ПЕТ РЕБРА** и ламелите подсигриват отличната експлоатация както при сухи, така и мокри пътни условия.
3. **ИНДИКАТОРИТЕ ЗА ИЗНОСВАНЕ** на страничните стени сигнализират, кога гумата трябва да се завърти за да се избегне увреждане на подпротекторния слой за безопасност и възможност за регенериране.
4. **СПЕЦИАЛНИТЕ КАНАЛИ** са проектирани да избегнат камъните и увреждане на корпуса.

ROMANIAN

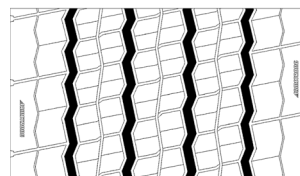
1. **MODELUL URBAN** cu pereti laterali extra grosi ofera protectie împotriva socurilor, impacturilor si a frecării de borduri.
2. **O BANDĂ DE RULARE LATĂ CU CINCI NERVURI** csi striatii asigura o gestionare si prindere excelenta atât în conditii de drum uscate cât si ude.
3. **INDICATORII DE UZURĂ LATERALI** psemnaleaza când este timpul pentru o rotatie a anvelopelor pentru evitarea daunelor pliurilor pentru siguranta si capacitate de resapare.
4. **ȘANȚURI SPECIALE** concepute pentru evitarea încăstrării pietrelor si deteriorării carcasei.

POSITIONS →



TYRE SIZE	PR	LOAD INDEX	SPEED SYMBOL	TREAD DEPTH	EU LABELING RATINGS		
				(MM)			
275/70R22.5	18	152/149	J	17.0	C	C	72dB/A

REGROOVING GUIDELINES		
TYRE SIZE	REGROOVING DEPTH	REGROOVING WIDTH
	(MM)	(MM)
275/70R22.5	2.5	5.0 - 6.0



ARMSTRONGTIRE.EU

TBR/EU/EN-BG-RO/2026

